

# Player valuation in European football (Extended version)

Edward Nsolo   Patrick Lambrix   Niklas Carlsson

Linköping University, Sweden

**Abstract.** As the success of a team depends on the performance of individual players, the valuation of player performance has become an important research topic. In this paper, we compare and contrast which attributes and skills best predict the success of individual players in their positions in five European top football leagues. Further, we evaluate different machine learning algorithms regarding prediction performance. Our results highlight features distinguishing top-tier players and show that prediction performance is higher for forwards than for other positions, suggesting that equally good prediction of defensive players may require more advanced metrics.

**Keywords:** Sports analytics · Data mining · Player valuation.

*This is an extended version of the paper [27] where we have added appendices with results that for the sake of brevity could not be included in the original paper.*

## 1 Introduction

The success of a football team depends a lot on the individual players making up that team. However, not all positions on a team are the same and there are significant differences in the style of game being played in different leagues. It is therefore important to take into account both the position and the league when evaluating individual players.

In this paper, we compare and contrast which attributes and skills best predict the success of individual players, within and across leagues and positions. First, we investigate which performance features are important in five European top leagues (Italy, Spain, England, Germany, and France) for defenders, midfielders, forwards, and goal keepers, respectively. Second, as part of our analysis, we evaluate different techniques for generating prediction models (based on different machine learning algorithms) for players belonging to the top segment of players. To capture further differentiation among the best players of a league, in our experiments, we have investigated top sets corresponding to 10%, 25% and 50% of the most highly ranked players in each considered category.

Our results provide interesting insights into what features may distinguish a top-tier player (in the top 10%, for example), from a good player (in the top 25%), or from an average player, within and across the leagues. The results also

suggest that predicting performance may be easier for forwards than for other positions. Our work distinguishes itself from other work on player valuation or player performance, by working with tiers of players (in contrast to individual ratings) as well as by dealing with many skills (in contrast to some work with focus on a particular skill).

The remainder of the paper is organized as follows. Section 2 presents related work. Section 3 discusses the data sets and the data preparation. Sections 4 and 5 present the feature selection and prediction methods, respectively, and show and discuss the corresponding results. Finally, conclusions are presented in Section 6.

## 2 Related work

In many sports, work has started on valuation of player performance. For the sake of brevity, we address the related work in football.

Much work focuses on game play, including rating game actions [9, 28], pass prediction [18, 5, 7, 31, 13], shot prediction [25], expectation for goals given a game state [8], or more general game strategies [24, 3, 15, 11, 12, 4, 14, 1]. Other works try to predict the outcome of a game by estimating the probability of scoring for the individual goal scoring opportunities [10], by relating games to the players in the teams [26], or by using team rating systems [21].

Regarding player performance, in [29] a weighted +/- measure for player performance is introduced. The skill of field vision is investigated in [20] while in [32] the authors develop a method to, based on the current skill set, determine the skill set of a player in the future. The performance versus market value for forwards is discussed in [17]. Further, the influence of the heterogeneity of a team on team performance is discussed in [19].

## 3 Data collection and preparation

### 3.1 Data collection

Data was collected from five top European leagues, i.e., the highest English (English Premier League, EPL), Spanish (La Liga), German (BundesLiga), Italian (Serie A) and French (Ligue 1) leagues for the 2015-16 season. WhoScored (<https://www.whoscored.com>) was used as the main data provider. Most of its data is acquired from Opta (<http://www.optasports.com>) which is used by many secondary data providers. WhoScored and other secondary data providers use internal schemes developed by a group of soccer experts to rate player and team performances. The differences in rating players is relatively small. Therefore, we used the WhoScored rating as the gold standard in our experiments. The data contained information about 2,606 players. The list of attributes is given in Table 1. These are the attributes of WhoScored except for some where we aggregated the attributes, as for instance, goals represents goals by right foot, goals by left foot, goals by head and goals by other body parts.

**Table 1.** List of attributes. The defensive, offensive and passing categories are as they are defined in WhoScored. Note that some attributes are in several of these categories. We added the two other categories for the remaining attributes used in WhoScored.

Type	attributes
Identifying	player id, nationality, player name, age, position, height, weight, team name, league
Defensive	tackles, interceptions, offsides won, clearance, blocks, own goals, dribbles, fouls committed
Offensive	goals, assists, shots per game, key passes, fouled, offsides committed, dispossessed, bad control, dribbles
Passing	assists, key passes, passes per game, pass success rate, crosses, long balls, through balls
All	man of the match, fulltime, halftime, minutes played, aerials won, red cards, yellow cards
Class	rating

We generated six groups of data sets, one group for each league as well as one for all leagues together. This allows us to find differences and commonalities between the different leagues. For each group, we divided the players with respect to their position on the field into 222 goalkeepers (GKs), 970 defenders (DFs), 1,109 midfielders (MDs), and 305 forwards (FWs). For the field players, players whose primary role and position on the pitch were defending and back were categorized as defenders. Players whose primary role and position on the pitch were playmaking and central were categorized as midfielders. Finally, players whose primary role and position on the pitch were attacking and front, were categorized as forwards.

### 3.2 Data preparation

For each data set representing a position (GK, DF, MD, FW) within a group (specific league or all leagues), we generated three final data sets representing the top 10%, 25% and 50% players for that position and group. We used Weka [16] with TigerJython in this phase.

We filled in some missing values in the data, such as nationality for some players, and used a uniform way to represent missing values over the data sets. We detected duplicates of players which transferred to other teams during the season and merged the data for these players. This affected 3 GKs, 20 DFs, 20 MDs, and 71 FWs. Each data set was normalized using the min-max method which transformed given numerical attribute values to a range of 0 to 1. The normalized value of value  $x$  is  $(x - \min)/(\max - \min)$ , where  $\min$  and  $\max$  are the minimum and maximum value for the attribute, respectively. The rating of WhoScored was used for the binary class attribute (deciding whether the player is in the top X% or not). The data was discretized to reflect this. We used SMOTE [6] to overcome the class imbalance for the 10% and 25% data sets. It is an oversampling technique that synthetically determines copies of the instances of the minority class to be added to the data set to match the quantity

of instances of the majority class. We refer to these final data sets (after all preparation steps) as LEAGUE-POSITION-Xpc where LEAGUE has the values EPL, Bundesliga, La-Liga, Ligue-1, Serie-A and All; POSITION has the values GK, DF, MD, and FW; and X has the values 10, 25, 50 (e.g., EPL-GK-25pc).

## 4 Feature selection

For each data set we used two ways implemented in Weka [16], a filter method and a wrapper method, to select possible features that are important for player performance.

### 4.1 Filter method

With the filter method we computed absolute values of the Pearson correlation coefficients between each attribute and the class attribute. In our application we retained all attributes that had a Pearson correlation coefficient of at least 0.3.

The results for the combined leagues are shown in Table 2. For the results regarding the individual leagues, we refer to the appendices.

This method is fast and runs in milliseconds for the different cases.

### 4.2 Wrapper method

Wrapper methods use machine learning (ML) algorithms and evaluate the performance of the algorithms on the data set using different subsets of attributes. We used the Weka setting where we started from the empty set and used best-first search with backtracking after five consecutive non-improving nodes in the search tree. We used seven ML algorithms that can handle numeric, categorical, and binary attributes and that were chosen from different types; i.e., BayesNet (Bayesian nets), NaiveBayes (Naive Bayes classifier), Logistic (builds linear logistic regression models), IBk (k-nearest-neighbor), J48 (a C4.5 decision tree learner), Part (rules from partial decision trees), and RandomForest (random forests). The merit of a subset was evaluated using WrapperSubsetEval that uses the classifier with, in our case, five-fold cross-validation. Then we computed a support count for each attribute reflecting how often it occurred in a selected attribute subset computed by the different ML algorithms. Attributes that were selected at least twice were retained as important attributes.

The results for the data sets for the combined leagues are shown in Table 3. For the results for the individual leagues we refer to the appendices.

The run times for this method depend on the ML algorithms and the data sets ranging from below a minute to several hours (see appendices). Logistic and RandomForest were the slowest. For the Bayesian approaches there was not much difference between the different data sets.

**Table 2.** Attributes filter method for combined leagues. Attributes in *italics* are in common with the other data sets for the same position (All-X-10pc, All-X-25pc, All-X-50pc). Attributes in **bold** are in common with the same data set for the wrapper method.

Selected attributes	Data set
minutes played, fulltime, clearance, dribble, yellow cards	All-GK-10pc
< none >	All-GK-25pc
<b>man of the match</b>	All-GK-50pc
<i>interceptions, man of the match, aerial won, crosses, tackles</i> , halftime, assists, <i>fulltime</i> , minutes played	All-DF-10pc
<i>man of the match, crosses, aerial won, interceptions</i> , <b>minutes played, fulltime, tackles, goals, halftime, shots per game</b>	All-DF-25pc
<i>crosses, fulltime</i> , minutes played, <i>interceptions, man of the match, aerial won, tackles, goals, through balls</i>	All-DF-50pc
<i>man of the match, key passes, fulltime, minutes played, shots per game, assists, crosses, goals, fouled, dispossessed</i> , halftime, <i>long balls, through balls, bad control, tackles</i>	All-MD-10pc
<i>fulltime, minutes played, man of the match, key passes, crosses, assists, fouled, shots per game, goals, dispossessed</i> , tackles, <i>halftime, through balls, long balls, bad control, dribble</i>	All-MD-25pc
<i>fulltime, minutes played, crosses, key passes, assists, man of the match, fouled, tackles, shots per game</i> , interceptions, yellow cards, <i>goals, through balls, dribble, dispossessed, bad control, long balls</i> , fouls committed, clearance	All-MD-50pc
<i>crosses, shots per game, fulltime, goals, man of the match, minutes played, assists, passes per game, key passes, fouled, aerial won, through balls, dispossessed, bad control, offsides committed, clearance, yellow cards, halftime, age, tackles, fouls committed</i>	All-FW-10pc
<i>fulltime, minutes played, shots per game, crosses, goals, passes per game, key passes, man of the match, assists, dispossessed, bad control, fouled, offsides committed, aerial won, through balls, tackles, clearance, yellow cards, fouls committed, age</i>	All-All-FW-25pc
<i>crosses, fulltime, minutes played, shots per game, key passes, passes per game, bad control, goals, dispossessed, fouled, aerial won, assists, offsides committed, through balls, fouls committed, man of the match, clearance, tackles, yellow cards, age</i>	All-FW-50pc

### 4.3 Discussion

**Filter method:** As expected, the selected attributes did not include any of the identifying attributes such as team name, nationality, player name and league, which all received low correlation coefficients.

As we used the absolute value of the Pearson correlation coefficients, the impact of the selected attributes could be positive as well as negative on the class variable. In our results most of these are considered positive (e.g., goals for forwards). We note that for the offensive and passing attributes the values are the highest for the FWs, while for the defensive attributes they are usually highest for the DFs.

The top 10 of selected attributes over all the different leagues (see appendices) (i.e., they are selected for most combinations of league, position and top X%) contain attributes related to all player responsibilities, such as tackles for defense,

**Table 3.** Attributes wrapper method for combined leagues. Attributes in *italics* are in common with the other data sets for the same position (All-X-10pc, All-X-25pc, All-X-50pc). Attributes in **bold** are in common with the same data set for the filter method. The numbers in parentheses show the support counts. For attributes without a number the support count is 2.

Selected attributes	Data set
<i>player name</i> (5), player id (3), tackles, own goals, halftime, long balls	All-GK-10pc
<i>player name</i> (4), team name (3), player id (3) own goals, through balls	All-GK-25pc
<b>man of the match</b> (7), <i>player name</i> (3), aerial won, player id	All-GK-50pc
<i>interceptions</i> (4), player name (4), <b>aerial won</b> (3), <i>man of the match</i> (3), <i>shots per game</i> (3), <b>tackles</b> (3), <i>team name</i> (3), age, passes per game, blocks, red cards, yellow cards	All-DF-10pc
player name (5), <b>man of the match</b> (5), <i>shots per game</i> (4), <b>tackles</b> (4), <i>team name</i> (4), <b>crosses</b> (3), <b>halftime</b> (3), <b>goals</b> , own goals, dispossessions, <b>fulltime</b> , offsides committed, <i>interceptions</i> , <b>minutes played</b>	All-DF-25pc
<b>man of the match</b> (7), <i>interceptions</i> (7), <b>crosses</b> (6), <i>shots per game</i> (5), <b>tackles</b> (4), assists (4), blocks (3), <b>goals</b> , <i>team name</i> , <b>through balls</b> , offsides committed, league	All-DF-50pc
player name (5), team name, <b>fouled</b> , own goals, <b>man of the match</b>	All-MD-10pc
<b>man of the match</b> (6), player name (4), <b>halftime</b> (4), <b>assists</b> (3), <b>shots per game</b> , <b>crosses</b> , pass success rate, league, red cards, <b>goals</b> , blocks, <b>key passes</b>	All-MD-25pc
<b>fulltime</b> (7), <b>crosses</b> (6), <b>man of the match</b> (4), <b>key passes</b> (3), <b>tackles</b> (3), <b>shots per game</b> (3), pass success rate, <b>assists</b>	All-MD-50pc
<b>man of the match</b> (5), player name (5), own goals (4), blocks (3), player id	All-FW-10pc
<b>man of the match</b> (7), player id (4), name (4), aerial won (3), <b>shots per game</b> (3), halftime (3), <b>goals</b> , <b>offsides committed</b> , age	All-FW-25pc
<b>man of the match</b> (6), <b>crosses</b> (5), <b>shots per game</b> (3), <b>assists</b> (3), <i>interceptions</i> (3), red cards, offsides won, <b>fouls committed</b> , weight, <b>bad control</b>	All-FW-50pc

shots per game and goals for offense, crosses for passing, and key passes and assists for both offense and passing. Further, there are other attributes such as man of the match, minutes played, full time and aerials won. Identifying attributes as well as red cards, own goals, and offsides won are rarely selected.

For all leagues, fewer attributes are selected for GKs and DFs than for MDs and FWs. In Tables 2 and 3 we have marked the attributes that are in common for the same position in *italics*. In particular, for FWs and MDs many attributes are selected for each of the top 10%, top 25% and top 50% data sets, for DFs there are fewer common attributes while very few for GKs.

Interception is selected more often for Serie A than for other leagues and is important for all positions in Serie A. Through balls is selected less in La Liga than in other leagues. Height is only selected for top 10% GKs, DFs and FWs in the Bundesliga and top 10% GKs in the EPL. Tackles are selected for all DFs in the Bundesliga, Ligue 1 and Serie A, while only for some of the DF data sets for EPL and La Liga. Offsides committed is selected for all FWs in all leagues, except for the EPL where it is only selected for the top 50% data set.

**Wrapper method:** The subsets produced by WrapperSubsetEval had merit scores of over 68% for the data sets of the combined leagues and 77% for the data sets of the individual leagues. IBk, NaiveBayes and Logistic had on average the highest merit scores (of over 90%) across all data sets, except for some GK and top 50% data sets. The selected subsets for the top-10% data sets for all four categories of players for all individual and for the combined leagues had the highest merit scores while the selected subsets for the top-50% data sets had the lowest merit scores. This might be caused by the amount of instances added when handling class imbalances. Further, the merit scores for the selected subsets for FWs were always higher than those for MDs, which in their turn were higher than for DFs and GKs.

In general, few selected attributes are common for the data sets related to the same position. For instance, for the Bundesliga there were no selected attributes in common for the different data sets at all. For the EPL, clearance was in common for GKs, arials won and man of the match for DFs and man of the match for MDs. In contrast to the filter method, identifying attributes do appear in the selected lists.

**Both:** We note that the selected attributes for the combined leagues and the individual leagues are different. This suggests that players doing well in one league will not necessarily do well in another leagues and may reflect the fact that the playing style is different in different leagues.

A larger ratio of the selected attributes for the wrapper methods are in common with the selected attributes for the filter methods for the same data set. For the combined leagues the overlap is larger than for the individual leagues and the overlap is largest for DFs and MDs. For the individual leagues the Bundesliga has a small overlap which is mostly situated in the MD data sets.

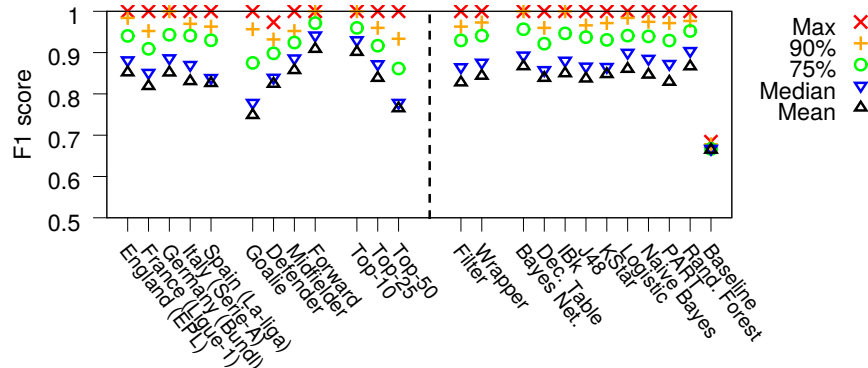
## 5 Prediction

### 5.1 Methods

For each LEAGUE-POSITION-Xpc data set, based on the results of the feature selection procedure we created two data sets with the selected attributes from the wrapper and filter methods, respectively. Using Weka [16] we ran several ML algorithms: RandomForest, BayesNet, Logistic, DecisionTable (a decision table majority classifier), IBk, KStar (nearest neighbor with generalized distance), NaiveBayes, J48, Part, and ZeroR (predicts the majority class for nominals or the average value for numerics). ZeroR was used as a baseline. We split each data set into a training (66% of the instances) and a testing set (34 % of the instances). All experiments were run 10 times and we calculated averages for the performance values.

### 5.2 Results

As performance metrics we used the standard measures of accuracy, precision, recall, F1 score (or f-measure), and AUC-ROC. Given the true and false positives



**Fig. 1.** Distribution statistics when keeping the reported factor fixed and varying all other factors.

(TP and FP) and the true and false negatives (TN and FN), the accuracy is  $(TP + TN) / (TP + TN + FP + FN)$ , the precision is  $TP / (TP + FP)$  and the recall is  $TP / (TP + FN)$ . The F1 score is a harmonic mean over precision and recall. AUC-ROC plots recall against precision.

Figures 1 and 2 show summary statistics for F1 scores and prediction performance, respectively, from full factor experiments, in which we evaluated every combination of (i) league or the combined leagues, (ii) position, (iii) top-set category, (iv) filter/wrapper selection, and (v) ML technique being applied. In total, this resulted in  $6 \times 4 \times 3 \times 2 \times 10 = 1,440$  prediction evaluations (14,400 when taking into account 10 runs per configuration). Other and more detailed results are presented in the appendices.

### 5.3 Discussion

Figure 1 shows the distribution statistics for the individual leagues when keeping the reported factor fixed and varying all other factors. In particular, for each such factor and level, we present the maximum F1 score, the 90%-ile F1 score, the 75%-ile F1 score, the median F1 score (equal to the 50%-ile score), and the average F1 score. Here, the first three factors (i.e., the left hand side of Figure 1) allow us to compare and contrast the prediction scores obtained for different (i) leagues, (ii) player positions, and (iii) top-set categories. These results suggest a clear ordering in the prediction scores based on position and top set. For example, FWs have the highest F1 scores, MDs the second highest, DFs the second lowest, and GKs the lowest F1 scores. This suggests that ML may be more successfully applied to evaluate more offensive positions, but may be less successful to predict the skills of more defensive positions (with GKs the other extreme of the spectrum). The techniques also appear much better at predicting players in the top-10 set than predicting players in the top-50 set (again with a clear ordering of the three sets). Smaller differences are observed across the leagues, although the EPL and Bundesliga appear to be the two leagues for which it is easiest to use basic ML to predict top players.



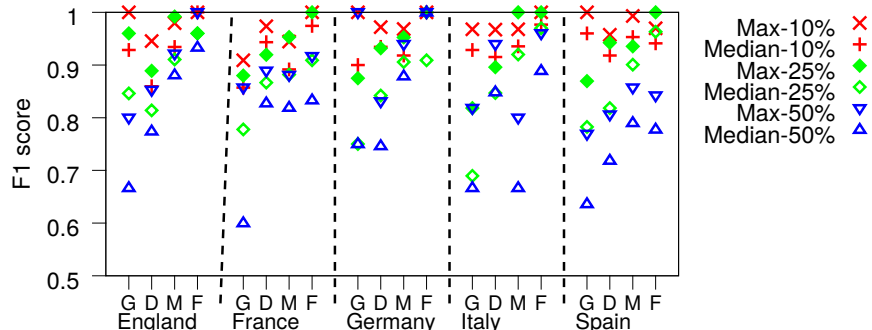


Fig. 2. F1 scores of the top-X player sets (X=10, 25, 50%) of each position and league.

The right hand side of Figure 1 compares the prediction success of the different methods. In general, the wrapper method is more successful than the filter method, and BayesNet and RandomForest provide the highest F1 scores across the distribution metrics. All methods significantly outperform the baseline.

Finally, we look closer at how well the above methods (the baseline excluded) can predict the top X players of each position in each of the leagues. Figure 2 presents these results. Here, we show results for the best predictor results (max) for each top-X set, where X=10%, 25%, and 50%, and the corresponding medians (when considering all filter/wrapper combinations with the different ML techniques). Again, the top-10% set is much easier to predict across the leagues (with medians above 0.9 across all leagues and positions, except GKs in France). As the top sets become larger, the F1 scores decrease, and again the more offensive positions obtain substantially higher prediction scores across the leagues.

## 6 Conclusion

In this paper we generated attributes and skills sets that best predict the success of individual players in their positions in five European top leagues. In contrast to other work we focused on the top tiers of players (top 10%, 25% and 50%). Further, we evaluated different ML algorithms on their performance of predicting the tiers using the generated attributes. For the sake of brevity we have shown some of the results in the body of the paper while for more results we refer to the appendices. Among other things, our prediction results show (i) a clear ordering in the prediction scores based on position (e.g., F1 of FW > F1 of MD > F1 of DF > F1 of GK) and top set (e.g., F1 of top 10% > F1 of top 25% > F1 of top 50%), (ii) that basic ML techniques are most successful to predict top players in EPL and Bundesliga (although good performance across the leagues), (iii) that the wrapper method is more successful than the filter method, and (iv) that BayesNet and RandomForest provide the highest F1 scores of the considered ML techniques.

One limitation of the approach is that the method is based on a ranking of experts, which is the current state of expertise. However, as in the case of base-

ball, the opinions of which properties constitute a 'good' player may change [22]. Future work could consider longitudinal drift in the rankings. It is also interesting to investigate the correlation of the rankings with the players' market value. Another limitation is that the approach does not take the quality of the team mates into account (although *team name* was sometimes a selected attribute). Although important, we are not aware of work that takes this explicitly into account. However, there is work on related questions such as team performance [5, 7, 21, 26, 19] and, in other sports, the performance of pairs or triples of players (e.g., [30, 23] for ice hockey and [2] for basketball). Another direction for future work is to apply the methodology only on game-related attributes. Some of the identifying attributes may not be that interesting for teams for identifying possible future players for the team. Further, for some attributes, such as shots per game, we may investigate using normalized values based on actual play time. It could also be interesting to look at different tiers and to develop more advanced features and metrics for the more defensive positions, aiming to provide equally good prediction for DF and GK as for FW, for example.

## References

1. Andrienko, G., Andrienko, N., Budziak, G., Dykes, J., Fuchs, G., von Landesberger, T., Weber, H.: Visual analysis of pressure in football. *Data Mining and Knowledge Discovery* **31**(6), 17931839 (2017), doi:10.1007/s10618-017-0513-2
2. Ayer, R.: Big 2's and big 3's: Analyzing how a team's best players complement each other. In: MIT Sloan Sports Analytics Conference (2012)
3. Bialkowski, A., Lucey, P., Carr, P., Yue, Y., Sridharan, S., Matthews, I.: Large-Scale Analysis of Soccer Matches Using Spatiotemporal Tracking Data. In: Kumar, R., Toivonen, H., Pei, J., Huang, J.Z., Wu, X. (eds.) *Proceedings of the 2014 IEEE International Conference on Data Mining*. pp. 725–730 (2014)
4. Bojinov, I., Bornn, L.: The Pressing Game: Optimal Defensive Disruption in Soccer. In: 10th MIT Sloan Sports Analytics Conference (2016)
5. Brandt, M., Brefeld, U.: Graph-based Approaches for Analyzing Team Interaction on the Example of Soccer. In: Davis, J., van Haaren, J., Zimmermann, A. (eds.) *Proceedings of the 2nd Workshop on Machine Learning and Data Mining for Sports Analytics*. CEUR Workshop Proceedings, vol. 1970, pp. 10–17 (2015)
6. Chawla, N.V., Bowyer, K.W., Hall, L.O., Kegelmeyer, W.P.: SMOTE: Synthetic Minority Over-sampling Technique. *Journal of Artificial Intelligence Research* **16**, 321–357 (2002), doi: 10.1613/jair.953
7. Cintia, P., Rinzivillo, S., Pappalardo, L.: Network-based Measures for Predicting the Outcomes of Football Games. In: Davis, J., van Haaren, J., Zimmermann, A. (eds.) *Proceedings of the 2nd Workshop on Machine Learning and Data Mining for Sports Analytics*. CEUR Workshop Proceedings, vol. 1970, pp. 46–54 (2015)
8. Decroos, T., Dzyuba, V., Van Haaren, J., Davis, J.: Predicting Soccer Highlights from Spatio-Temporal Match Event Streams. In: *Proceedings of the 31st AAAI Conference on Artificial Intelligence*. pp. 1302–1308 (2017)
9. Decroos, T., Van Haaren, J., Dzyuba, V., Davis, J.: STARSS: A Spatio-Temporal Action Rating System for Soccer. In: Davis, J., Kaytoue, M., Zimmermann, A. (eds.) *Proceedings of the 4th Workshop on Machine Learning and Data Mining for Sports Analytics*. CEUR Workshop Proceedings, vol. 1971, pp. 11–20 (2017)

10. Eggels, H., van Elk, R., Pechenizkiy, M.: Explaining Soccer Match Outcomes with Goal Scoring Opportunities Predictive Analytics. In: van Haaren, J., Kaytoue, M., Davis, J. (eds.) Proceedings of the 3rd Workshop on Machine Learning and Data Mining for Sports Analytics. CEUR Workshop Proceedings, vol. 1842 (2016)
11. Fernando, T., Wei, X., Fookes, C., Sridharan, S., Lucey, P.: Discovering Methods of Scoring in Soccer Using Tracking Data . In: Lucey, P., Yue, Y., Wiens, J., Morgan, S. (eds.) Proceedings of the 2nd KDD Workshop on Large Scale Sports Analytics (2015)
12. Gyarmati, L., Anguera, X.: Automatic Extraction of the Passing Strategies of Soccer Teams. In: Lucey, P., Yue, Y., Wiens, J., Morgan, S. (eds.) Proceedings of the 2nd KDD Workshop on Large Scale Sports Analytics (2015)
13. Gyarmati, L., Stanojevic, R.: QPass: a Merit-based Evaluation of Soccer Passes. In: Lucey, P., Yue, Y., Wiens, J., Morgan, S. (eds.) Proceedings of the 3rd KDD Workshop on Large Scale Sports Analytics (2016)
14. Haaren, J.V., Davis, J., Hannosset, S.: Strategy Discovery in Professional Soccer Match Data. In: Lucey, P., Yue, Y., Wiens, J., Morgan, S. (eds.) Proceedings of the 3rd KDD Workshop on Large Scale Sports Analytics (2016)
15. Haaren, J.V., Dzyuba, V., Hannosset, S., Davis, J.: Automatically Discovering Offensive Patterns in Soccer Match Data. In: Fromont, E., De Bie, T., van Leeuwen, M. (eds.) Proceedings of International Symposium on Intelligent Data Analysis. LNCS, vol. 9385, pp. 286–297 (2015)
16. Hall, M., Frank, E., Holmes, G., Pfahringer, B., Reutemann, P., Witten, I.H.: The WEKA Data Mining Software: An Update. SIGKDD Explorations **11**(1), 10–18 (2009), doi: 10.1145/1656274.1656278
17. He, M., Cachucho, R., Knobbe, A.: Football Player’s Performance and Market Value. In: Davis, J., van Haaren, J., Zimmermann, A. (eds.) Proceedings of the 2nd Workshop on Machine Learning and Data Mining for Sports Analytics. CEUR Workshop Proceedings, vol. 1970, pp. 87–95 (2015)
18. Horton, M., Gudmundsson, J., Chawla, S., Estephan, J.: Classification of Passes in Football Matches using Spatiotemporal Data. In: Lucey, P., Yue, Y., Wiens, J., Morgan, S. (eds.) Proceedings of the 1st KDD Workshop on Large Scale Sports Analytics (2014)
19. Ingersoll, K., Malesky, E., Saiegh, S.M.: Heterogeneity and team performance: Evaluating the effect of cultural diversity in the world’s top soccer league. Journal of Sports Analytics **3**(2), 67–92 (2017), doi: 10.3233/JSA-170052
20. Jordet, G., Bloomfield, J., Heijmerikx, J.: The hidden foundation of field vision in English Premier League (EPL) soccer players. In: 7th MIT Sloan Sports Analytics Conference (2013)
21. Lasek, J.: EURO 2016 Predictions Using Team Rating Systems. In: van Haaren, J., Kaytoue, M., Davis, J. (eds.) Proceedings of the 3rd Workshop on Machine Learning and Data Mining for Sports Analytics. CEUR Workshop Proceedings, vol. 1842 (2016)
22. Lewis, M.: Moneyball: The Art of Winning an Unfair Game. W. W. Norton & Company (2003), isbn: 978-0-393-05765-2
23. Ljung, D., Carlsson, N., Lambrix, P.: Player pairs valuation in ice hockey. In: Brefeld, U., Davis, J., van Haaren, J., Zimmermann, A. (eds.) Proceedings of the 5th Workshop on Machine Learning and Data Mining for Sports Analytics (2018)
24. Lucey, P., Bialkowski, A., Carr, P., Foote, E., Matthews, I.: Characterizing Multi-Agent Team Behavior from Partial Team Tracings: Evidence from the English Premier League. In: 26th AAAI Conference on Artificial Intelligence. pp. 1387–1393 (2012)

25. Lucey, P., Bialkowski, A., Monfort, M., Carr, P., Matthews, I.: Quality vs Quantity: Improved Shot Prediction in Soccer using Strategic Features from Spatiotemporal Data. In: 9th MIT Sloan Sports Analytics Conference (2015)
26. Maystre, L., Kristof, V., Ferrer, A.J.G., Grossglauser, M.: The Player Kernel: Learning Team Strengths Based on Implicit Player Contributions. In: van Haaren, J., Kaytoue, M., Davis, J. (eds.) Proceedings of the 3rd Workshop on Machine Learning and Data Mining for Sports Analytics. CEUR Workshop Proceedings, vol. 1842 (2016)
27. Nsolo, E., Lambrix, P., Carlsson, N.: Player valuation in European football. In: Brefeld, U., Davis, J., van Haaren, J., Zimmermann, A. (eds.) Proceedings of the 5th Workshop on Machine Learning and Data Mining for Sports Analytics (2018)
28. Sarkar, S., Chakraborty, S.: Pitch actions that distinguish high scoring teams: Findings from five European football leagues in 2015-16 . *Journal of Sports Analytics* **4**(1), 1–14 (2018), doi: 10.3233/JSA-16161
29. Schultze, S.R., Wellbrock, C.M.: A weighted plus/minus metric for individual soccer player performance. *Journal of Sports Analytics* **4**(2), 121–131 (2018), doi: 10.3233/JSA-170225
30. Thomas, A., Ventura, S.L., Jensen, S., Ma, S.: Competing process hazard function models for player ratings in ice hockey. *The Annals of Applied Statistics* **7**(3), 1497–1524 (2013)
31. Vercruyssen, V., Raedt, L.D., Davis, J.: Qualitative Spatial Reasoning for Soccer Pass Prediction. In: van Haaren, J., Kaytoue, M., Davis, J. (eds.) Proceedings of the 3rd Workshop on Machine Learning and Data Mining for Sports Analytics. CEUR Workshop Proceedings, vol. 1842 (2016)
32. Vroonen, R., Decroos, T., Haaren, J.V., Davis, J.: Predicting the Potential of Professional Soccer Players. In: Davis, J., Kaytoue, M., Zimmermann, A. (eds.) Proceedings of the 4th Workshop on Machine Learning and Data Mining for Sports Analytics. CEUR Workshop Proceedings, vol. 1971, pp. 1–10 (2017)

## **A Attribute abbreviations**

In the paper we have written the full names of the attributes. For the result tables below we use the abbreviations as they are used in the system. The next table shows the abbreviations and their meanings.

**Table 4.** Abbreviations of attribute names.

Attribute type	Attribute	Abbreviation	Note
Identifying	player id nationality player name age position height weight team name league	player_id flag name age position height weight team_name league	
Defensive	tackles interceptions offsides won clearance blocks own goals dribbles fouls committed	tackles inter offsidesWon clear blocks owng drib foulsCommitted	per game per game per game per game per game per season per game per game
Offensive	goals assists shots per game key passes fouled offsides committed dispossessed bad control dribbles	goals assists shotspg keyp fouled offsidesCommitted disposs BadControl drib	per season per season per game per game per game per game per game per game per game
Passing	assists key passes passes per game pass success rate crosses long balls through balls	assists keyp avgp PassSuccPers crosses longb thrb	per season per game per game per game per game per game per game
All	man of the match fulltime halftime minutes played aerials won red cards yellow cards	motm fullTime halfTime mins aw red yel	per season   per season per game per season per season
Class	rating	rating	

## B Features selection results, filter method - Attributes for the individual leagues

**Table 5.** Feature selection - Filter method results: Bundesliga.

League	POS	PC	Attributes
BundesLiga	GK	10	<b>motm</b> , <b>team_name</b> , <b>name</b> , keyp, thrb, avgp, height, flag, assists
BundesLiga	GK	25	<i>motm</i> , PassSuccPerc, aw, <b>flag</b>
BundesLiga	GK	50	<b>motm</b> , <b>crosses</b> , aw, mins, fullTime, clear, PassSuccPerc, inter
BundesLiga	DF	10	<b>inter</b> , <b>aw</b> , <i>fullTime</i> , mins, halfTime, <i>shotspg</i> , <i>motm</i> , <i>tackles</i> , <i>crosses</i> , height, <b>assists</b> , weight, <i>thrb</i>
BundesLiga	DF	25	<i>aw</i> , <i>inter</i> , <b>shotspg</b> , <i>crosses</i> , <i>motm</i> , <i>fullTime</i> , mins, <i>tackles</i> , <i>thrb</i> , <i>assists</i>
BundesLiga	DF	50	<b>crosses</b> , mins, <i>fullTime</i> , <b>inter</b> , <i>motm</i> , <i>aw</i> , <i>thrb</i> , <b>tackles</b> , clear, <i>shotspg</i> , <i>assists</i>
BundesLiga	MD	10	<i>motm</i> , <i>shotspg</i> , <i>avgp</i> , <i>assists</i> , <i>keyp</i> , mins, <b>fullTime</b> , <i>crosses</i> , <i>goals</i> , <i>fouled</i> , offsidesCommitted, <i>disposs</i>
BundesLiga	MD	25	<b>keyp</b> , <b>avgp</b> , <i>crosses</i> , mins, <i>fullTime</i> , <i>assists</i> , <i>shotspg</i> , <b>motm</b> , <i>fouled</i> , <i>goals</i> , thrb, <b>tackles</b> , longb, <i>disposs</i> , BadControl, fousCommitted, <b>halfTime</b> , drib, yel
BundesLiga	MD	50	<b>fullTime</b> , mins, <b>crosses</b> , <i>fouled</i> , <i>keyp</i> , <i>avgp</i> , <b>shotspg</b> , <b>motm</b> , <i>assists</i> , <b>tackles</b> , <b>thrb</b> , yel, <i>goals</i> , inter, <b>drib</b> , fousCommitted, BadControl, <b>disposs</b> , aw, longb
BundesLiga	FW	10	<i>motm</i> , <b>fouled</b> , <i>crosses</i> , <b>aw</b> , <i>shotspg</i> , mins, <i>fullTime</i> , BadControl, <i>goals</i> , <i>disposs</i> , <i>assists</i> , <b>clear</b> , <i>avgp</i> , <i>keyp</i> , <i>offsidesCommitted</i> , yel, <i>fousCommitted</i> , team_name, <b>name</b> , flag, <b>height</b> , <i>thrb</i> , <i>age</i> , red, drib, <i>tackles</i>
BundesLiga	FW	25	mins, <i>fullTime</i> , <i>shotspg</i> , <b>BadControl</b> , <b>fouled</b> , <b>crosses</b> , <i>goals</i> , <i>motm</i> , <i>disposs</i> , <i>aw</i> , yel, <i>offsidesCommitted</i> , <i>avgp</i> , <i>keyp</i> , <i>assists</i> , <i>fousCommitted</i> , halfTime, <i>tackles</i> , clear, <i>age</i> , <i>thrb</i> , inter
BundesLiga	FW	50	<i>crosses</i> , <i>fullTime</i> , mins, BadControl, <b>shotspg</b> , <i>offsidesCommitted</i> , <i>avgp</i> , <b>keyp</b> , <i>fouled</i> , <i>assists</i> , <b>goals</b> , <i>aw</i> , <i>fousCommitted</i> , <i>disposs</i> , <i>motm</i> , yel, <i>thrb</i> , <i>tackles</i> , <i>age</i> , clear, longb

**Table 6.** Feature selection - Filter method results: EPL.

League	POS	PC	Attributes
EPL	GK	10	<b>fouled</b> , <i>clear</i> , <b>height</b> , tackles, team_name, name, aw, flag, motm, <b>drib</b> , PassSuccPerc, weight, avgp, longb, crosses, BadControl
EPL	GK	25	<i>clear</i> , motm, fouled, aw, height
EPL	GK	50	<i>clear</i>
EPL	DF	10	<i>inter</i> , <i>keyp</i> , <i>motm</i> , assists, <i>crosses</i> , tackles, fouled
EPL	DF	25	<i>motm</i> , <i>inter</i> , mins, fullTime, <b>aw</b> , <i>crosses</i> , halfTime, <i>keyp</i> , goals, <b>assists</b>
EPL	DF	50	fullTime, mins, <i>motm</i> , <b>aw</b> , <i>inter</i> , <i>crosses</i> , <b>tackles</b> , halfTime, <i>thrb</i> , <i>keyp</i> , shotspg, goals
EPL	MD	10	<i>motm</i> , <i>fullTime</i> , mins, <i>keyp</i> , <i>shotspg</i> , <i>disposs</i> , <i>assists</i> , <i>crosses</i> , goals, <i>fouled</i> , <i>halfTime</i> , <i>BadControl</i> , <i>drib</i> , longb, <i>thrb</i> , <i>tackles</i>
EPL	MD	25	fullTime, mins, <i>motm</i> , <i>keyp</i> , <i>crosses</i> , <b>assists</b> , <i>shotspg</i> , <i>disposs</i> , <b>fouled</b> , goals, <b>tackles</b> , <i>drib</i> , <i>BadControl</i> , <i>yel</i> , <i>halfTime</i> , longb, foulsCommitted, <i>inter</i> , <b>thrb</b>
EPL	MD	50	<b>fullTime</b> , mins, <i>crosses</i> , <i>keyp</i> , <b>tackles</b> , <i>motm</i> , <b>shotspg</b> , <b>drib</b> , <i>assists</i> , <b>yel</b> , <i>fouled</i> , <b>goals</b> , <i>disposs</i> , <i>inter</i> , <i>BadControl</i> , <i>thrb</i> , longb, foulsCommitted, <b>halfTime</b> , <i>clear</i>
EPL	FW	10	<b>shotspg</b> , goals, <i>crosses</i> , <i>assists</i> , <i>motm</i> , mins, <i>fullTime</i> , <i>avgp</i> , <i>thrb</i> , <i>keyp</i> , <i>disposs</i> , <i>yel</i> , owng, team_name, <i>BadControl</i> , name, flag, <i>aw</i> , offsidesWon, weight, tackles, <i>fouled</i> , <i>halfTime</i> , <i>clear</i>
EPL	FW	25	<b>shotspg</b> , goals, <i>crosses</i> , <i>motm</i> , mins, <i>aw</i> , <i>avgp</i> , <b>fullTime</b> , <i>keyp</i> , <i>assists</i> , <i>clear</i> , <i>yel</i> , <i>disposs</i> , <i>fouled</i> , <i>BadControl</i> , <i>thrb</i> , foulsCommitted, blocks, owng
EPL	FW	50	<i>crosses</i> , <i>shotspg</i> , <i>avgp</i> , <b>keyp</b> , <b>goals</b> , mins, <i>fullTime</i> , <i>BadControl</i> , <i>aw</i> , <i>clear</i> , <i>disposs</i> , <i>motm</i> , <i>fouled</i> , <i>assists</i> , <i>thrb</i> , <b>foulsCommitted</b> , <i>drib</i> , tackles, offsidesCommitted, <i>inter</i> , <i>yel</i> , blocks



**Table 7.** Feature selection - Filter method results: La Liga.

League	POS	PC	Attributes
La-Liga	GK	10	aw, fouled, team_name, name, drib, age, yel, motm, red, flag
La-Liga	GK	25	yel
La-Liga	GK	50	<b>motm</b> , mins, fullTime
La-Liga	DF	10	<i>crosses</i> , <b>motm</b> , mins, fullTime, <i>inter</i> , aw, goals
La-Liga	DF	25	<b>crosses</b> , <b>motm</b> , <i>inter</i> , mins, fullTime, <b>aw</b> , <b>tackles</b>
La-Liga	DF	50	<b>crosses</b> , <b>motm</b> , mins, fullTime, <i>inter</i> , <b>aw</b> , goals
La-Liga	MD	10	<i>crosses</i> , mins, fullTime, <b>motm</b> , <i>assists</i> , <i>thrb</i> , <i>keyp</i> , <i>avgp</i> , <i>fouled</i> , <i>tackles</i> , <i>goals</i> , <i>shotspg</i> , halfTime, <i>drib</i> , <b>team_name</b> , <b>PassSuccPerc</b>
La-Liga	MD	25	fullTime, mins, <i>assists</i> , <b>motm</b> , <i>crosses</i> , <i>keyp</i> , <i>fouled</i> , <i>avgp</i> , <i>tackles</i> , <i>shotspg</i> , <i>goals</i> , yel, <b>BadControl</b> , longb, <i>thrb</i> , <i>drib</i> , halfTime, <i>disposs</i>
La-Liga	MD	50	<b>fullTime</b> , mins, <i>crosses</i> , <b>tackles</b> , <i>assists</i> , <i>keyp</i> , <i>avgp</i> , <i>inter</i> , <b>yel</b> , <i>thrb</i> , <i>fouled</i> , <i>motm</i> , <b>shotspg</b> , <i>goals</i> , longb, <i>drib</i> , aw, clear
La-Liga	FW	10	<b>goals</b> , <b>shotspg</b> , <b>motm</b> , mins, age, <i>fouled</i> , fullTime, aw, <i>crosses</i> , <i>assists</i> , <i>offsidesCommitted</i> , team_name, <i>avgp</i> , <i>disposs</i> , <b>name</b> , <i>clear</i> , <i>keyp</i> , halfTime, <b>owng</b> , flag, <i>BadControl</i> , <i>blocks</i> , <i>yel</i>
La-Liga	FW	25	<i>goals</i> , <b>shotspg</b> , <b>motm</b> , fullTime, <i>crosses</i> , mins, <b>fouled</b> , <i>disposs</i> , <i>BadControl</i> , <i>assists</i> , <i>offsidesCommitted</i> , <i>inter</i> , <i>avgp</i> , <b>age</b> , <i>keyp</i> , <b>drib</b> , aw, <i>tackles</i> , <i>yel</i> , <i>clear</i>
La-Liga	FW	50	<b>fullTime</b> , <i>crosses</i> , mins, <i>shotspg</i> , <i>goals</i> , <i>BadControl</i> , <i>disposs</i> , <i>inter</i> , <i>assists</i> , <i>motm</i> , <i>thrb</i> , <i>offsidesCommitted</i> , aw, <i>yel</i> , <i>avgp</i> , <i>keyp</i> , <i>tackles</i> , <i>fouled</i> , <i>foulsCommitted</i> , <i>clear</i> , <i>drib</i> , <i>blocks</i>

**Table 8.** Feature selection - Filter method results: Ligue 1.

League	POS	PC	Attributes
Ligue-1	GK	10	thrb, PassSuccPerc, fouled, fullTime, mins, BadControl, <b>team_name</b> , <b>name</b> , inter, yel, motm, drib, foulsCommitted, tackles, flag, crosses
Ligue-1	GK	25	fullTime, mins, motm
Ligue-1	GK	50	<none>
Ligue-1	DF	10	<i>tackles, crosses</i> , assists, <i>shotspg, motm, inter</i> , halfTime, PassSuccPerc, <i>aw, avgp, keyp, flag, drib, goals, longb, disposs</i> , BadControl, team_name
Ligue-1	DF	25	<i>aw, crosses, inter, motm, tackles, shotspg</i> , halfTime, assists
Ligue-1	DF	50	<b>motm, inter, crosses, aw, tackles</b> , mins, <b>fullTime, goals, shotspg</b>
Ligue-1	MD	10	<i>motm, keyp, avgp, fouled, assists, shotspg, goals, disposs, longb, fullTime, BadControl, mins, crosses</i> , offsidesCommitted
Ligue-1	MD	25	<i>avgp, fouled, keyp, motm, crosses, assists, fullTime, mins, disposs, shotspg, longb, goals</i> , tackles, halfTime, <i>BadControl</i>
Ligue-1	MD	50	<b>fullTime, mins, crosses, fouled, assists, avgp, keyp, motm</b> , thrb, <b>tackles, inter, disposs, shotspg, goals</b> , yel, drib, <i>BadControl, longb</i> , foulsCommitted
Ligue-1	FW	10	<i>crosses, offsidesCommitted, assists, fullTime, goals, shotspg, mins, clear, thrb, fouled, blocks</i> , foulsCommitted, team_name, <b>halfTime</b> , <i>disposs, motm, aw, name, avgp, inter, keyp, BadControl, flag</i>
Ligue-1	FW	25	<b>crosses, fullTime, mins, shotspg, aw, keyp, avgp, disposs, goals</b> , <i>thrb, offsidesCommitted, clear, age, BadControl, foulsCommitted, yel, fouled, assists, motm, tackles</i>
Ligue-1	FW	50	<i>disposs, fullTime, mins, BadControl, crosses, shotspg, foulsCommitted, aw, avgp, keyp, offsidesCommitted, fouled, thrb, assists, goals, tackles, yel, clear, age, longb</i>

**Table 9.** Feature selection - Filter method results: Serie A.

League	POS	PC	Attributes
Serie-A	GK	10	mins, fullTime, <b>aw</b> , <b>team_name</b> , <b>name</b> , flag, yel, inter, clear, PassSuccPerc
Serie-A	GK	25	motm, flag
Serie-A	GK	50	<b>motm</b> , fullTime, mins, yel, aw
Serie-A	DF	10	<b>motm</b> , <b>inter</b> , <b>tackles</b> , <b>goals</b> , <b>crosses</b> , fouled, fullTime, <i>aw</i> , <i>mins</i> , <b>assists</b>
Serie-A	DF	25	<i>inter</i> , <b>motm</b> , <i>crosses</i> , <i>aw</i> , fullTime, <i>mins</i> , <i>tackles</i> , <i>goals</i> , halfTime
Serie-A	DF	50	<b>inter</b> , <b>crosses</b> , fullTime, <i>mins</i> , <b>motm</b> , <i>tackles</i> , <i>aw</i> , yel, clear, halfTime, thrb, <b>goals</b>
Serie-A	MD	10	<i>motm</i> , <i>crosses</i> , <i>keyp</i> , <i>thrb</i> , <i>avgp</i> , <i>assists</i> , <i>shotspg</i> , <i>goals</i> , <i>halfTime</i> , <i>mins</i> , <i>fullTime</i> , longb, <i>inter</i> , PassSuccPerc, flag, <i>tackles</i> , <i>disposs</i> , yel, clear
Serie-A	MD	25	<i>crosses</i> , <b>halfTime</b> , <i>fullTime</i> , <i>mins</i> , <b>motm</b> , <b>avgp</b> , <i>keyp</i> , <b>goals</b> , <b>assists</b> , <i>shotspg</i> , <i>thrb</i> , <i>inter</i> , fouled, <i>tackles</i> , <i>disposs</i> , drib, PassSuccPerc
Serie-A	MD	50	<i>fullTime</i> , <i>mins</i> , <b>crosses</b> , <b>motm</b> , <i>goals</i> , <b>inter</b> , <b>keyp</b> , <i>avgp</i> , <i>halfTime</i> , <i>shotspg</i> , <i>thrb</i> , <i>assists</i> , yel, <b>disposs</b> , <b>fouled</b> , <i>tackles</i> , <b>clear</b> , <b>foulsCommitted</b>
Serie-A	FW	10	<b>goals</b> , <i>fullTime</i> , <b>motm</b> , <i>mins</i> , <i>avgp</i> , <i>crosses</i> , <i>keyp</i> , <i>assists</i> , flag, <i>thrb</i> , <i>blocks</i> , <i>shotspg</i> , <b>inter</b> , <i>tackles</i> , halfTime, <i>fouled</i> , <i>disposs</i> , longb, team_name, drib, <i>BadControl</i> , <i>clear</i> , <i>offsidesCommitted</i> , name
Serie-A	FW	25	<i>fullTime</i> , <i>mins</i> , <i>assists</i> , <b>crosses</b> , <b>keyp</b> , <b>avgp</b> , <b>goals</b> , <i>motm</i> , <i>shotspg</i> , <b>disposs</b> , <b>tackles</b> , <b>clear</b> , <i>blocks</i> , <i>fouled</i> , <i>thrb</i> , <i>aw</i> , <i>BadControl</i> , <b>inter</b> , yel, <i>foulsCommitted</i> , halfTime, drib, age, <i>offsidesCommitted</i>
Serie-A	FW	50	<b>crosses</b> , <b>fullTime</b> , <i>mins</i> , <i>shotspg</i> , <i>keyp</i> , <i>avgp</i> , <i>fouled</i> , <i>goals</i> , <i>assists</i> , <i>inter</i> , <b>BadControl</b> , <i>disposs</i> , <i>blocks</i> , <i>motm</i> , <i>aw</i> , <i>thrb</i> , <i>clear</i> , <i>foulsCommitted</i> , <i>offsidesCommitted</i> , yel, <i>tackles</i> , age, longb

**Table 10.** Feature selection - Filter method: Aggregated count of occurrence of selected attributes for the different roles.

attributes	BundesLiga				EPL				La-Liga				Ligue-1				Serie-A				$\sum$	$\sum$
	10	25	50	$\sum$	10	25	50	$\sum$	10	25	50	$\sum$	10	25	50	$\sum$	10	25	50	$\sum$		
motm	4	4	4	12	4	4	3	11	4	3	4	11	4	4	2	10	3	4	4	11	55	
mins	3	3	4	10	2	3	3	8	3	3	4	10	3	3	3	9	4	3	4	11	48	
fullTime	3	3	4	10	2	3	3	8	3	3	4	10	3	3	3	9	4	3	4	11	48	
crosses	3	3	4	10	4	3	3	10	3	3	3	9	4	3	3	10	3	3	3	9	48	
assists	4	3	3	10	3	3	2	8	3	2	2	7	3	3	2	8	3	2	2	7	40	
tackles	2	3	3	8	4	1	3	8	1	3	2	6	2	3	3	8	3	3	3	9	39	
goals	2	2	2	6	2	3	3	8	3	2	3	8	3	2	3	8	3	3	3	9	39	
aw	2	3	4	9	2	3	2	7	3	2	3	8	2	2	2	6	2	2	3	7	37	
shotspg	3	3	3	9	2	2	3	7	2	2	2	6	3	3	3	9	2	2	2	6	37	
keyp	3	2	2	7	3	3	3	9	3	2	2	7	3	2	2	7	2	2	2	6	36	
fouled	2	2	2	6	4	3	2	9	3	2	2	7	3	2	2	7	2	2	2	6	35	
inter	1	2	3	6	1	2	3	6	1	2	3	6	3	1	2	6	4	3	3	10	34	
thrb	3	3	3	9	2	2	3	7	1	1	2	4	2	1	2	5	2	2	3	7	32	
avgp	3	2	2	7	2	1	1	4	3	2	2	7	3	2	2	7	2	2	2	6	31	
dispos	2	2	2	6	2	2	2	6	1	2	1	4	3	2	2	7	2	2	2	6	29	
yel	1	2	2	5	1	2	2	5	2	3	2	7	1	1	2	4	2	1	4	7	28	
BadControl	1	2	2	5	3	2	2	7	1	2	1	4	4	2	2	8	1	1	1	3	27	
clear	1	1	3	5	2	2	3	7	1	1	2	4	1	1	1	3	3	1	3	7	26	
halfTime	1	2	0	3	2	2	2	6	3	1	0	4	2	2	0	4	2	3	2	7	24	
drib	1	1	1	3	2	1	2	5	2	2	2	6	2	0	1	3	1	2	0	3	20	
foulsCommitted	1	2	2	5	0	2	2	4	0	0	1	1	2	1	2	5	0	1	2	3	18	
longb	0	1	2	3	2	1	1	4	0	1	1	2	2	1	2	5	2	0	1	3	17	
offsidesCommitted	2	1	1	4	0	0	1	1	1	1	1	3	2	1	1	4	1	1	1	3	15	
flag	2	1	0	3	2	0	0	2	2	0	0	2	3	0	0	3	3	1	0	4	14	
team_name	2	0	0	2	2	0	0	2	3	0	0	3	3	0	0	3	2	0	0	2	12	
age	1	1	1	3	0	0	0	0	2	1	0	3	0	1	1	2	0	1	1	2	10	
name	2	0	0	2	2	0	0	2	2	0	0	2	2	0	0	2	2	0	0	2	10	
PassSuccPerc	0	1	1	2	1	0	0	1	1	0	0	1	2	0	0	2	2	1	0	3	9	
blocks	0	0	0	0	0	1	1	2	1	0	1	2	1	0	0	1	1	1	1	3	8	
height	3	0	0	3	1	1	0	2	0	0	0	0	0	0	0	0	0	0	0	0	5	
weight	1	0	0	1	2	0	0	2	0	0	0	0	0	0	0	0	0	0	0	0	3	
owng	0	0	0	0	1	1	0	2	1	0	0	1	0	0	0	0	0	0	0	0	3	
red	1	0	0	1	0	0	0	0	1	0	0	1	0	0	0	0	0	0	0	0	2	
offsidesWon	0	0	0	0	1	0	0	1	0	0	0	0	0	0	0	0	0	0	0	0	1	
Grand Total	60	55	60	175	63	53	55	171	60	46	50	156	71	46	48	165	63	52	58	173	840	

## C Feature selection results, wrapper method - Attributes for the individual leagues

**Table 11.** Feature selection - Wrapper method results: Bundesliga.

League	POS	PC	Attributes
BundesLiga	GK	10	player_id, <b>name</b> , <b>motm</b> , clear, red, <b>team_name</b>
BundesLiga	GK	25	player_id, <b>flag</b> , name, age
BundesLiga	GK	50	<b>motm</b> , height, BadControl, <b>crosses</b> , drib
BundesLiga	DF	10	player_id, <b>aw</b> , name, <b>height</b> , red, dispos, offsidesCommitted, <b>assists</b> , <b>crosses</b> , <b>inter</b>
BundesLiga	DF	25	name, player_id, team_name, <b>shotspg</b>
BundesLiga	DF	50	motm, <b>crosses</b> , PassSuccPerc, foulsCommitted, blocks, <b>tackles</b> , owng, team_name, fouled, <b>inter</b>
BundesLiga	MD	10	name, <b>fullTime</b> , team_name
BundesLiga	MD	25	<b>motm</b> , <b>halfTime</b> , name, <b>keyp</b> , player_id, <b>avgp</b> , team_name, offsidesWon, flag, yel, <b>tackles</b>
BundesLiga	MD	50	<b>motm</b> , <b>mins</b> , halfTime, <b>thrb</b> , height, <b>drib</b> , <b>tackles</b> , <b>shotspg</b> , <b>crosses</b> , <b>fullTime</b> , <b>dispos</b>
BundesLiga	FW	10	<b>clear</b> , <b>name</b> , <b>aw</b> , <b>fouled</b> , <b>height</b> , player_id, longb
BundesLiga	FW	25	<b>fouled</b> , <b>BadControl</b> , name, <b>crosses</b>
BundesLiga	FW	50	<b>keyp</b> , goals, <b>shotspg</b>

**Table 12.** Feature selection - Wrapper method results: EPL.

League	POS	PC	Attributes
EPL	GK	10	<b>clear</b> , <b>height</b> , player_id, <b>fouled</b> , <b>drib</b> , inter
EPL	GK	25	team_name, name, red, motm, <b>clear</b>
EPL	GK	50	motm, <b>clear</b> , weight, drib, foulsCommitted
EPL	DF	10	player_id, name, <b>aw</b> , PassSuccPerc, team_name, <b>motm</b> , halfTime
EPL	DF	25	<b>motm</b> , name, offsidesWon, tackles, avgp, team_name, <b>crosses</b> , <b>aw</b> , <b>keyp</b> , <b>assists</b> , owng, clear, flag
EPL	DF	50	<b>motm</b> , <b>keyp</b> , PassSuccPerc, <b>tackles</b> , <b>inter</b> , <b>crosses</b> , clear, assists, foulsCommitted, fullTime, <b>aw</b>
EPL	MD	10	name, team_name, <b>motm</b> , player_id
EPL	MD	25	<b>motm</b> , halfTime, name, blocks, flag, <b>tackles</b> , <b>assists</b> , <b>fouled</b> , team_name, aw, <b>thrb</b> , avgp, height
EPL	MD	50	<b>crosses</b> , <b>tackles</b> , <b>fullTime</b> , <b>shotspg</b> , <b>motm</b> , team_name, <b>halfTime</b> , offsidesWon, <b>goals</b> , player_id, <b>drib</b> , <b>yel</b>
EPL	FW	10	shotspg
EPL	FW	25	red, name, <b>crosses</b> , <b>fullTime</b> , <b>motm</b> , <b>shotspg</b>
EPL	FW	50	<b>goals</b> , <b>foulsCommitted</b> , <b>keyp</b> , <b>crosses</b> , <b>motm</b>

**Table 13.** Feature selection - Wrapper method results: La Liga.

League	POS	PC	Attributes
La-Liga	GK	10	tackles, name, red
La-Liga	GK	25	team_name, player_id, inter, name, assists, aw, keyp
La-Liga	GK	50	<b>motm</b> , crosses, inter, owng, tackles
La-Liga	DF	10	<i>team_name</i> , <b>motm</b> , name, <i>inter</i>
La-Liga	DF	25	<i>team_name</i> , fouled, offsidesCommitted, <b>tackles</b> , name, <b>motm</b> , flag, halfTime, <b>inter</b> , <b>crosses</b> , blocks, <b>aw</b> , BadControl
La-Liga	DF	50	<b>motm</b> , <i>crosses</i> , offsidesWon, PassSuccPerc, longb, tackles, <b>mins</b> , <b>inter</b> , <i>team_name</i> , drib, weight, fullTime, dispos, height, age, <b>aw</b>
La-Liga	MD	10	<b>team_name</b> , name, <b>motm</b> , <b>PassSuccPerc</b> , tackles, player_id, age, name
La-Liga	MD	25	<b>motm</b> , name, player_id, <b>BadControl</b> , <b>thrb</b>
La-Liga	MD	50	<b>fullTime</b> , <b>tackles</b> , offsidesWon, <b>shotspg</b> , <b>assists</b> , owng, <b>thrb</b> , <b>yel</b>
La-Liga	FW	10	<i>player_id</i> , <b>owng</b> , name, <b>motm</b> , <b>shotspg</b> , <b>goals</b>
La-Liga	FW	25	<b>motm</b> , <b>shotspg</b> , <i>player_id</i> , <b>fouled</b> , <b>drib</b> , <b>assists</b> , weight, <b>age</b>
La-Liga	FW	50	<b>fullTime</b> , <b>mins</b> , aw, <i>player_id</i> , <b>assists</b> , halfTime

**Table 14.** Feature selection - Wrapper method results: Ligue 1.

League	POS	PC	Attributes
Ligue-1	GK	10	<b>name</b> , <b>team_name</b>
Ligue-1	GK	25	name, player_id
Ligue-1	GK	50	crosses, foulsCommitted, owng, team_name, PassSuccPerc, BadControl, fullTime
Ligue-1	DF	10	name, player_id
Ligue-1	DF	25	name, <b>tackles</b> , aw, offsidesCommitted, BadControl, player_id, clear, <b>shotspg</b> , <b>inter</b> , <b>motm</b> , height
Ligue-1	DF	50	<b>motm</b> , <b>tackles</b> , <b>inter</b> , <b>goals</b> , <b>crosses</b> , dispos, <b>fullTime</b>
Ligue-1	MD	10	name, player_id
Ligue-1	MD	25	<b>motm</b> , halfTime, name, flag, fouled, PassSuccPerc, offsidesCommitted, red, aw, team_name, <b>crosses</b> , <b>assists</b> , <b>keyp</b>
Ligue-1	MD	50	<b>fullTime</b> , <b>shotspg</b> , <b>keyp</b> , <b>crosses</b> , <b>tackles</b> , <b>inter</b> , offsidesCommitted, clear
Ligue-1	FW	10	<b>name</b> , player_id, <b>halfTime</b> , <b>goals</b> , <b>blocks</b> , <b>offsidesCommitted</b>
Ligue-1	FW	25	<b>shotspg</b> , <b>goals</b> , name, owng, team_name, <i>crosses</i> , player_id, red, <i>blocks</i>
Ligue-1	FW	50	<b>fullTime</b> , <b>mins</b> , <i>blocks</i> , offsidesWon, <b>shotspg</b>

**Table 15.** Feature selection - Wrapper method results: Serie A.

League	POS	PC	Attributes
Serie-A	GK	10	<b>name</b> , player_id, <b>aw</b> , <b>team_name</b>
Serie-A	GK	25	player_id, name, thrb, PassSuccPerc, halfTime
Serie-A	GK	50	<b>motm</b> , flag, weight, fouled, halfTime
Serie-A	DF	10	player_id, name, <b>inter</b> , red, <b>goals</b> , <b>motm</b> , team_name, shotspg, <b>tackles</b> , offsidesCommitted, <b>assists</b> , age
Serie-A	DF	25	<b>motm</b> , name, aw, player_id, longb, PassSuccPerc, <b>goals</b>
Serie-A	DF	50	<b>motm</b> , <b>inter</b> , <b>crosses</b> , <b>goals</b> , shotspg, keyp
Serie-A	MD	10	name, <i>player_id</i> , clear, team_name
Serie-A	MD	25	<b>halfTime</b> , name, <b>motm</b> , fullTime, <b>assists</b> , fouled, <b>avgp</b> , player_id, thrb, mins, <b>goals</b> , height
Serie-A	MD	50	<b>motm</b> , <b>crosses</b> , <b>inter</b> , <b>foulsCommitted</b> , <b>keyp</b> , <b>fouled</b> , <i>player_id</i> , <b>shotspg</b> , <b>clear</b> , weight, <b>disposs</b>
Serie-A	FW	10	<b>goals</b> , player_id, <b>motm</b> , name, <b>inter</b>
Serie-A	FW	25	<b>keyp</b> , offsidesWon, name, <b>goals</b> , <b>disposs</b> , <b>tackles</b> , <b>crosses</b> , <b>clear</b> , <b>inter</b> , <b>avgp</b>
Serie-A	FW	50	<b>motm</b> , <b>crosses</b> , <b>fullTime</b> , drib, <b>BadControl</b>

**Table 16.** Feature selection - Wrapper method: Aggregated count of attributes as selected by wrapper schemes.

Attributes	Bundesliga				EPL				La-Liga				Ligue-1				Serie-A				$\Sigma$	$\Sigma$	$\Sigma$
	10	25	50	$\Sigma$	10	25	50	$\Sigma$	10	25	50	$\Sigma$	10	25	50	$\Sigma$	10	25	50	$\Sigma$			
motm	4	7	17	28	4	17	16	37	11	19	13	43	1	8	8	17	7	12	22	41	166		
name	15	15	1	31	10	17	2	29	11	12	1	24	18	16	2	36	16	17	1	34	154		
player_id	12	13	0	25	13	4	4	21	8	11	5	24	10	7	3	20	15	12	3	30	120		
crosses	3	4	11	18	1	9	11	21	0	3	9	12	3	5	10	18	2	3	16	21	90		
team_name	5	7	3	15	5	11	3	19	13	11	5	29	3	6	3	12	8	2	0	10	85		
tackles	1	3	6	10	2	7	8	17	5	6	12	23	1	3	12	16	3	2	3	8	74		
inter	4	2	3	9	3	2	4	9	2	7	7	16	0	3	10	13	6	3	13	22	69		
shotspg	3	3	5	11	7	3	3	13	2	6	3	11	2	8	10	20	3	2	5	10	65		
halfTime	1	6	4	11	3	7	6	16	0	3	3	6	4	7	3	14	1	11	4	16	63		
fullTime	3	2	3	8	1	6	8	15	0	0	13	13	0	2	15	17	2	5	3	10	63		
goals	0	2	5	7	2	3	10	15	3	3	1	7	3	8	4	15	9	7	3	19	63		
keyp	1	5	7	13	1	5	9	15	1	3	2	6	0	5	7	12	1	5	5	11	57		
aw	8	3	0	11	3	6	3	12	2	4	6	12	0	5	2	7	5	6	2	13	55		
fouled	6	7	3	16	5	4	2	11	1	9	1	11	1	3	2	6	1	3	5	9	53		
assists	3	3	2	8	2	6	3	11	4	6	5	15	2	4	3	9	3	4	1	8	51		
clear	5	0	2	7	6	4	7	17	2	2	1	5	1	3	5	9	4	2	2	8	46		
height	6	2	8	16	5	2	2	9	1	0	2	3	2	5	2	9	2	4	2	8	45		
red	6	1	3	10	1	9	1	11	3	1	1	5	0	4	3	7	3	2	2	7	40		
PassSuccPerc	2	1	4	7	3	0	5	8	3	1	3	7	1	5	3	9	2	5	2	9	40		
age	1	4	3	8	2	2	1	5	5	3	4	12	3	2	2	7	3	2	2	7	39		
flag	2	6	1	9	0	7	2	9	0	5	2	7	0	5	3	8	1	1	3	5	38		
foulsCommitted	0	3	4	7	2	2	7	11	1	1	3	5	2	1	3	6	0	2	5	7	36		
BadControl	3	4	6	13	0	1	2	3	2	4	3	9	0	3	3	6	2	0	3	5	36		
offsidesWon	1	3	0	4	2	6	2	10	2	2	7	11	0	1	4	5	1	5	0	6	36		
owng	0	1	3	4	1	3	2	6	4	2	5	11	1	5	4	10	0	1	2	3	34		
thrb	2	3	3	8	2	4	1	7	0	3	4	7	1	1	2	4	2	4	0	6	32		
drib	0	2	5	7	5	2	4	11	2	2	2	6	1	1	0	2	1	1	2	4	30		
blocks	1	0	2	3	1	5	0	6	0	2	3	5	4	3	4	11	2	1	0	3	28		
offsidesCommitted	2	1	1	4	0	2	2	4	1	4	1	6	3	4	3	10	2	1	1	4	28		
disposs	3	1	3	7	0	1	0	1	2	1	3	6	0	2	3	5	1	5	2	8	27		
mins	0	1	4	5	0	1	0	1	1	1	6	8	1	2	5	8	0	2	2	4	26		
weight	2	1	1	4	0	1	3	4	0	3	4	7	0	1	1	2	1	2	5	8	25		
yel	1	2	2	5	1	1	4	6	1	1	3	5	1	0	1	2	2	2	2	6	24		
avgp	2	3	0	5	1	5	1	7	0	2	1	3	1	2	0	3	1	4	0	5	23		
longb	3	0	2	5	0	1	1	2	0	1	4	5	1	1	3	5	1	2	1	4	21		
pos	1	0	1	2	0	4	1	5	1	0	1	2	0	1	2	3	1	1	2	4	16		
league	0	0	2	2	1	0	1	2	1	0	1	2	1	0	2	3	1	0	0	1	10		
Grand Total	112	121	130	363	95	170	141	406	95	144	150	389	72	142	152	366	115	143	126	384	1908		



## D Feature selection results, wrapper method - Merit results: scheme vs topPc

**Table 17.** Merit scheme vs topPc: Bundesliga,

Scheme	10	25	50	Average
ibk	0.981	0.933	0.889	0.934
naivebayes	0.980	0.912	0.904	0.932
logistic	0.980	0.920	0.883	0.928
randomForest	0.967	0.904	0.902	0.924
bayesnet	0.969	0.902	0.842	0.904
j48	0.954	0.874	0.868	0.899
part	0.957	0.867	0.866	0.896
Average	0.970	0.902	0.879	0.917

**Table 18.** Merit scheme vs topPc: EPL

Scheme	10	25	50	Average
naivebayes	0.971	0.935	0.863	0.923
randomForest	0.983	0.924	0.857	0.921
logistic	0.981	0.931	0.847	0.920
ibk	0.982	0.941	0.811	0.911
bayesnet	0.974	0.935	0.780	0.897
part	0.966	0.896	0.815	0.892
j48	0.961	0.895	0.804	0.886
Average	0.974	0.922	0.825	0.907

**Table 19.** Merit scheme vs topPc: La liga.

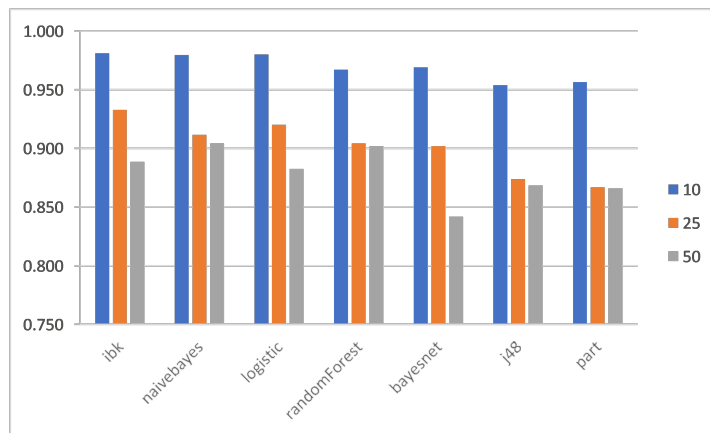
Scheme	10	25	50	Average
logistic	0.969	0.928	0.852	0.916
naivebayes	0.968	0.918	0.850	0.912
randomForest	0.983	0.901	0.847	0.911
ibk	0.979	0.939	0.804	0.907
j48	0.967	0.891	0.823	0.893
bayesnet	0.971	0.901	0.774	0.882
part	0.959	0.866	0.809	0.878
Average	0.971	0.906	0.823	0.900

**Table 20.** Merit scheme vs topPc: Ligue 1.

Scheme	10	25	50	Average
naivebayes	0.968	0.921	0.867	0.919
logistic	0.970	0.925	0.847	0.914
ibk	0.971	0.939	0.823	0.911
bayesnet	0.964	0.919	0.819	0.900
randomForest	0.963	0.896	0.839	0.899
part	0.953	0.867	0.801	0.874
j48	0.960	0.863	0.787	0.870
Average	0.964	0.904	0.826	0.898

**Table 21.** Merit scheme vs topPc: Serie-A.

Scheme	10	25	50	Average
ibk	0.982	0.952	0.871	0.935
naivebayes	0.969	0.921	0.892	0.927
logistic	0.975	0.927	0.874	0.925
randomForest	0.975	0.929	0.871	0.925
bayesnet	0.985	0.909	0.825	0.906
j48	0.958	0.912	0.834	0.901
part	0.955	0.901	0.833	0.896
Average	0.971	0.921	0.857	0.916



**Fig. 3.** Merit scheme vs topPc: Bundesliga.

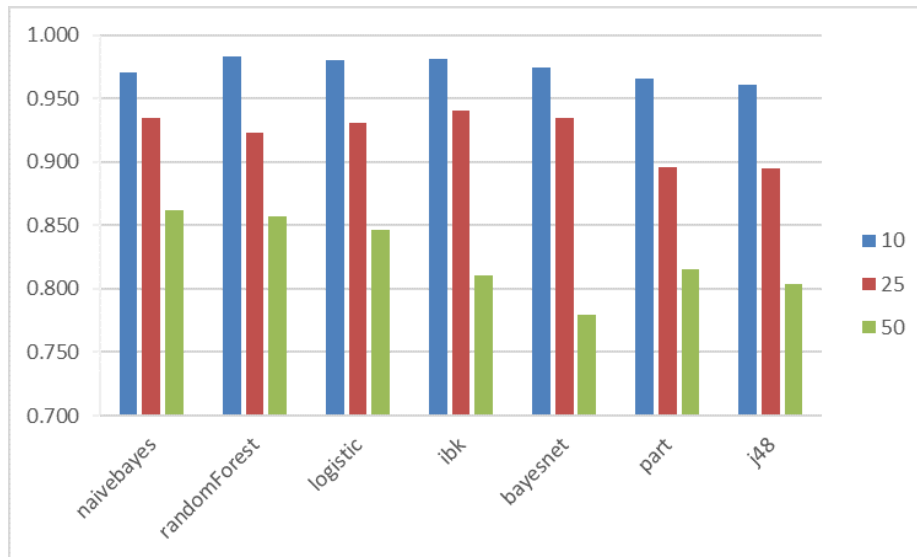


Fig. 4. Merit scheme vs topPc: EPL.

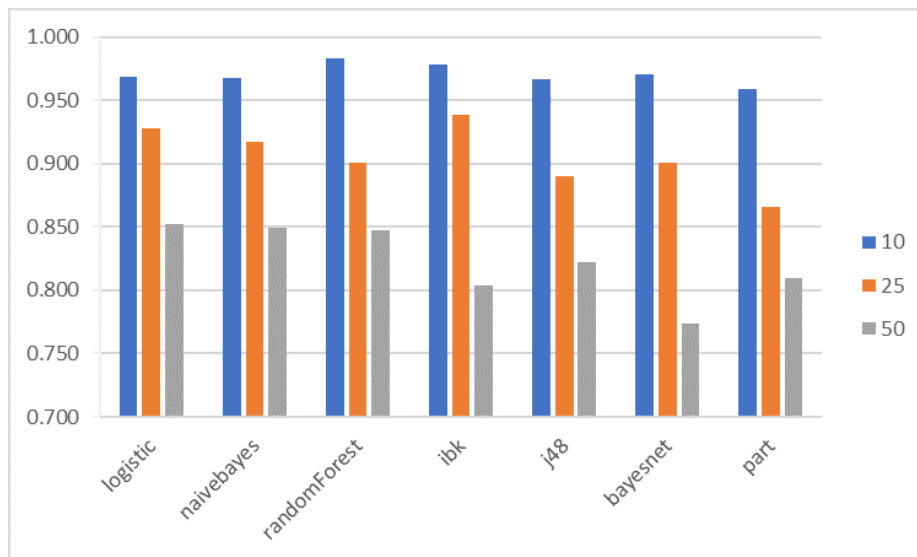


Fig. 5. Merit scheme vs topPc: La liga.

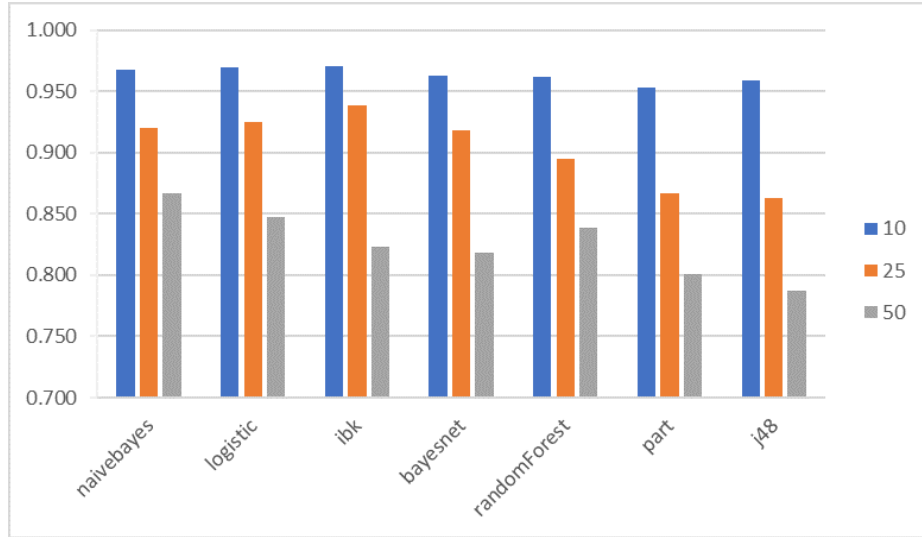


Fig. 6. Merit scheme vs topPc: Ligue 1.

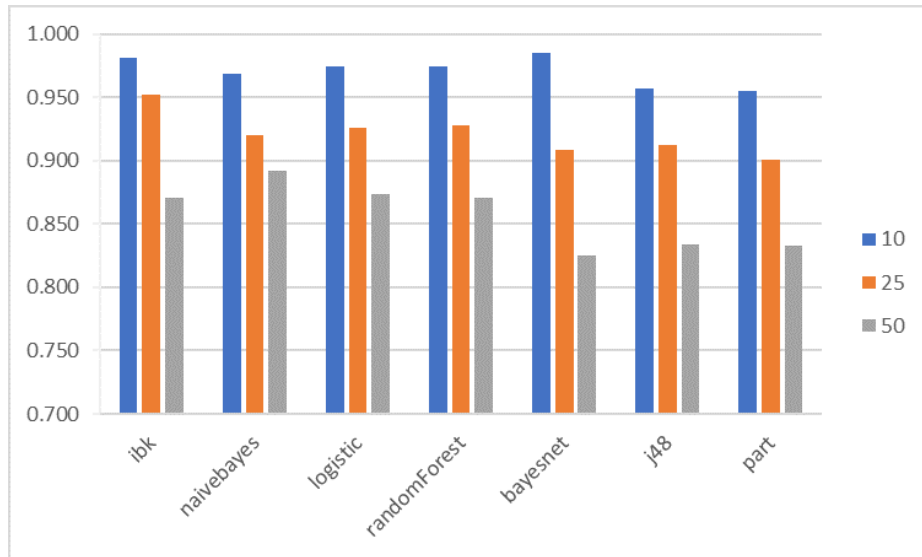


Fig. 7. Merit scheme vs topPc: Serie A.

## E Feature selection results, wrapper method - Merit results: scheme vs Pos

**Table 22.** Merit scheme vs pos: Bundesliga.

Scheme	DF	FW	GK	MD	Average
ibk	0.910	0.989	0.918	0.920	0.934
naivebayes	0.908	0.976	0.903	0.939	0.932
logistic	0.890	0.975	0.912	0.933	0.928
randomForest	0.891	0.978	0.900	0.929	0.924
bayesnet	0.880	0.985	0.828	0.924	0.904
j48	0.872	0.963	0.851	0.909	0.899
part	0.866	0.963	0.851	0.906	0.896
Average	0.888	0.975	0.881	0.923	0.917

**Table 23.** Merit scheme vs pos: EPL.

Scheme	DF	FW	GK	MD	Average
naivebayes	0.894	0.973	0.898	0.926	0.923
randomForest	0.899	0.968	0.875	0.943	0.921
logistic	0.877	0.971	0.894	0.937	0.920
ibk	0.880	0.973	0.873	0.920	0.911
bayesnet	0.894	0.964	0.789	0.940	0.897
part	0.876	0.956	0.820	0.917	0.892
j48	0.868	0.956	0.804	0.918	0.886
Average	0.884	0.966	0.850	0.929	0.907

**Table 24.** Merit scheme vs pos: La liga.

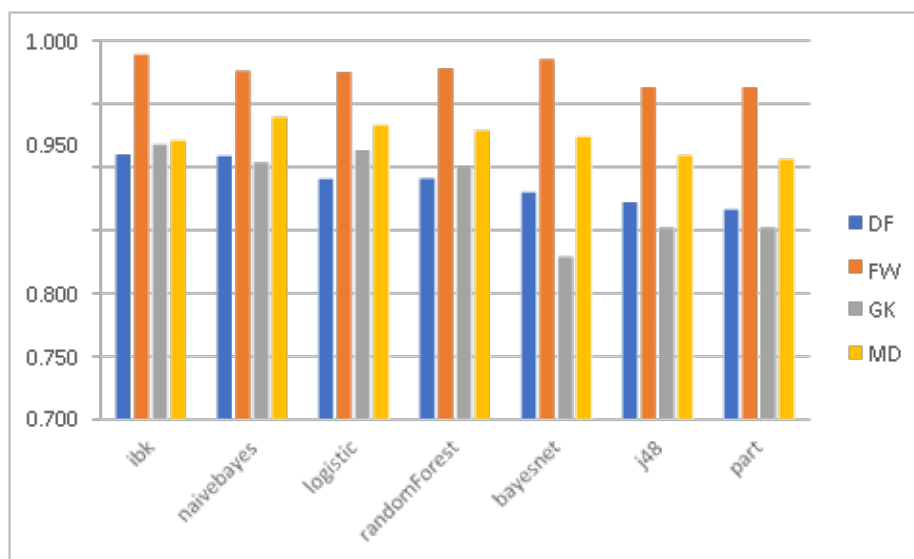
Scheme	DF	FW	GK	MD	Average
logistic	0.901	0.971	0.863	0.930	0.916
naivebayes	0.900	0.969	0.848	0.931	0.912
randomForest	0.896	0.950	0.863	0.933	0.911
ibk	0.877	0.936	0.902	0.914	0.907
j48	0.871	0.928	0.854	0.920	0.893
bayesnet	0.889	0.930	0.785	0.923	0.882
part	0.858	0.909	0.837	0.909	0.878
Average	0.884	0.942	0.850	0.923	0.900

**Table 25.** Merit scheme vs pos: Ligue 1.

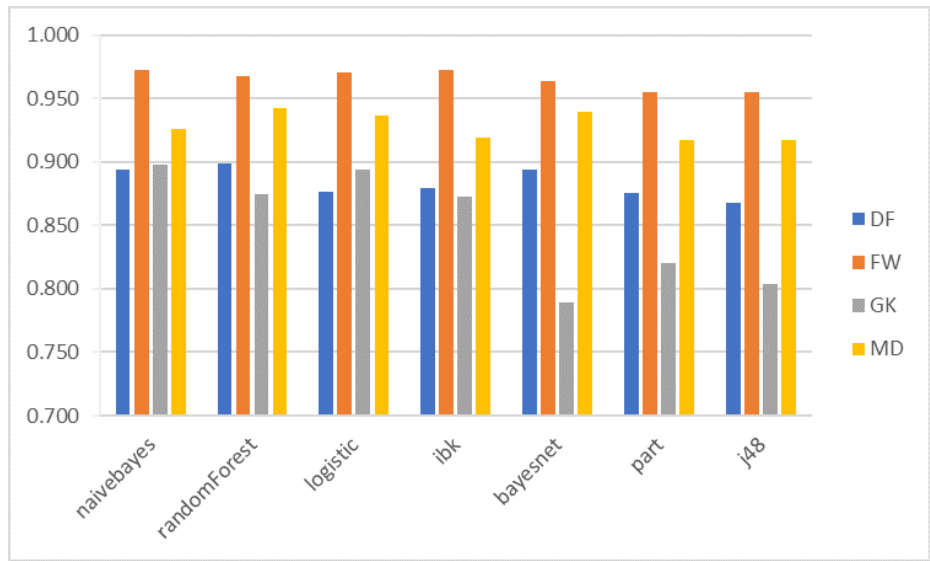
Scheme	DF	FW	GK	MD	Average
naivebayes	0.915	0.973	0.858	0.928	0.919
logistic	0.921	0.976	0.834	0.925	0.914
ibk	0.908	0.949	0.883	0.903	0.911
bayesnet	0.893	0.956	0.836	0.916	0.900
randomForest	0.917	0.942	0.820	0.917	0.899
part	0.872	0.939	0.796	0.888	0.874
j48	0.875	0.928	0.778	0.899	0.870
Average	0.900	0.952	0.829	0.911	0.898

**Table 26.** Merit scheme vs pos: Serie A.

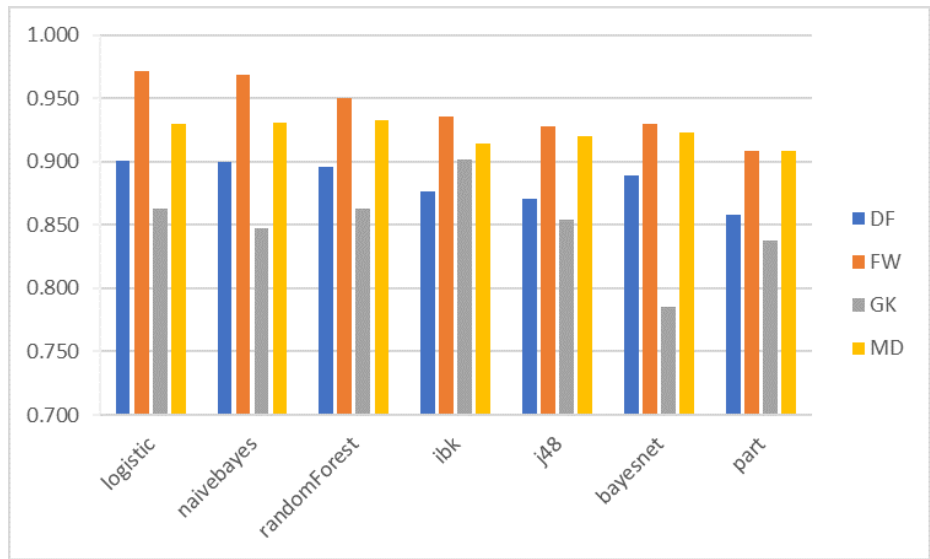
Scheme	DF	FW	GK	MD	Average
ibk	0.930	0.964	0.908	0.937	0.935
naivebayes	0.918	0.960	0.896	0.935	0.927
logistic	0.908	0.980	0.874	0.937	0.925
randomForest	0.912	0.968	0.885	0.934	0.925
bayesnet	0.897	0.968	0.844	0.915	0.906
j48	0.890	0.946	0.858	0.912	0.901
part	0.890	0.943	0.858	0.893	0.896
Average	0.906	0.961	0.875	0.923	0.916



**Fig. 8.** Merit scheme vs pos: Bundesliga.



**Fig. 9.** Merit scheme vs pos: EPL.



**Fig. 10.** Merit scheme vs pos: La liga.

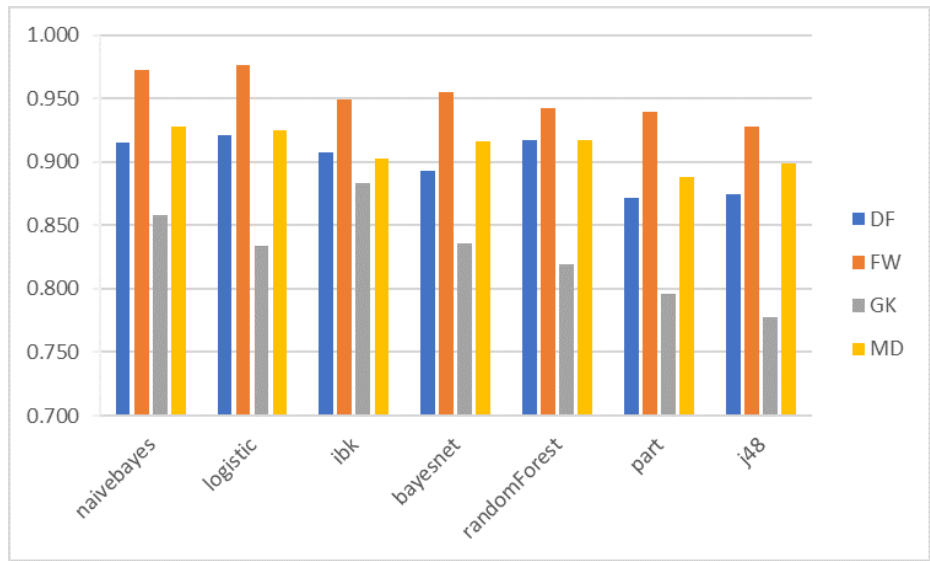


Fig. 11. Merit scheme vs pos: Ligue 1.

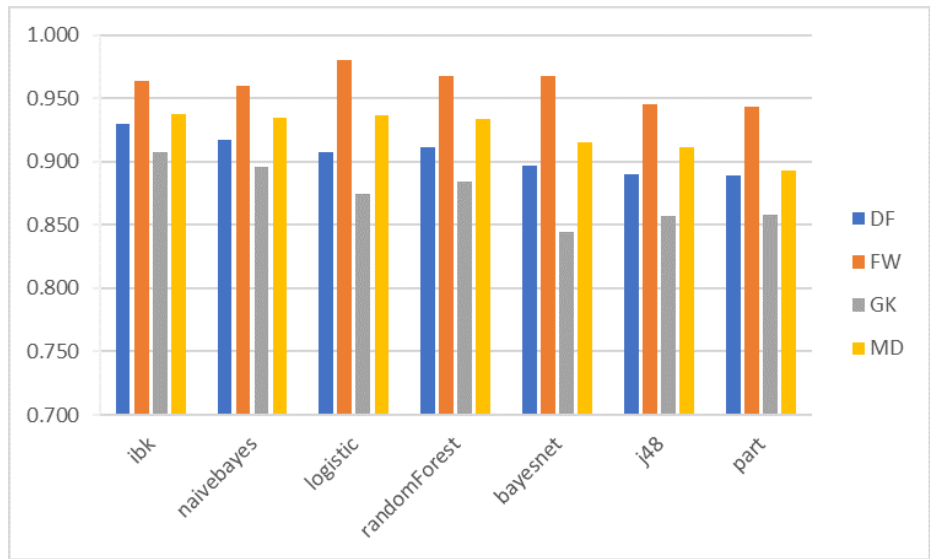


Fig. 12. Merit scheme vs pos: Serie A.



## F Prediction - Accuracy results for individual leagues

**Table 27.** Prediction - Accuracy results for Bundesliga. First columns for filter attributes, last columns for wrapper attributes.

Classifier	Filter					Wrapper					GAV
	DF	FW	GK	MD	AV	DF	FW	GK	MD	AV	
NaiveBayes	79.7	98.7	76.0	87.8	85.5	87.1	97.6	76.6	93.3	88.7	87.1
top10	81.8	100.0	69.6	87.9	84.8	96.4	96.7	82.6	91.9	91.9	88.4
top25	76.9	96.0	83.3	85.6	85.5	87.9	96.0	88.9	95.2	92.0	88.7
top50	80.3	100.0	75.0	90.0	86.3	77.0	100.0	58.3	92.9	82.1	84.2
Logistic	80.2	96.9	77.0	89.4	85.9	85.4	95.6	73.4	92.3	86.7	86.3
top10	85.5	96.7	78.3	91.1	87.9	97.3	96.7	87.0	93.5	93.6	90.7
top25	78.0	100.0	77.8	91.3	86.8	90.1	96.0	83.3	96.2	91.4	89.1
top50	77.0	94.1	75.0	85.7	83.0	68.9	94.1	50.0	87.1	75.0	79.0
BayesNet	78.6	98.9	72.9	89.3	84.9	86.7	96.9	75.8	90.5	87.5	86.2
top10	89.1	96.7	82.6	90.3	89.7	97.3	96.7	91.3	94.4	94.9	92.3
top25	74.7	100.0	77.8	90.4	85.7	92.3	100.0	77.8	91.3	90.4	88.0
top50	72.1	100.0	58.3	87.1	79.4	70.5	94.1	58.3	85.7	77.2	78.3
PART	81.0	93.4	82.7	87.8	86.2	80.2	93.4	79.0	87.5	85.0	85.6
top10	89.1	100.0	87.0	90.3	91.6	93.6	100.0	87.0	88.7	92.3	92.0
top25	83.5	92.0	77.8	87.5	85.2	68.1	92.0	83.3	86.5	82.5	83.8
top50	70.5	88.2	83.3	85.7	81.9	78.7	88.2	66.7	87.1	80.2	81.1
RandomForest	83.4	97.3	76.6	90.3	86.9	86.6	97.6	55.6	88.4	82.0	84.5
top10	91.8	100.0	82.6	96.8	92.8	96.4	96.7	69.6	91.9	88.6	90.7
top25	84.6	92.0	72.2	88.5	84.3	87.9	96.0	72.2	90.4	86.6	85.5
top50	73.8	100.0	75.0	85.7	83.6	75.4	100.0	25.0	82.9	70.8	77.2
J48	78.3	93.4	80.8	88.7	85.3	77.9	93.4	67.9	87.5	81.7	83.5
top10	89.1	100.0	87.0	94.4	92.6	84.5	100.0	87.0	88.7	90.1	91.3
top25	76.9	92.0	72.2	87.5	82.2	70.3	92.0	50.0	86.5	74.7	78.4
top50	68.9	88.2	83.3	84.3	81.2	78.7	88.2	66.7	87.1	80.2	80.7
IBk	80.1	92.8	63.1	87.4	80.9	83.2	96.7	72.5	88.8	85.3	83.1
top10	90.0	100.0	78.3	94.4	90.7	95.5	100.0	87.0	93.5	94.0	92.3
top25	81.3	96.0	44.4	86.5	77.1	86.8	96.0	72.2	94.2	87.3	82.2
top50	68.9	82.4	66.7	81.4	74.8	67.2	94.1	58.3	78.6	74.6	74.7
DecisionTable	75.1	92.3	77.5	86.5	82.9	76.4	92.3	68.3	90.7	81.9	82.4
top10	90.0	96.7	82.6	86.3	88.9	87.3	96.7	82.6	93.5	90.0	89.5
top25	71.4	92.0	66.7	84.6	78.7	74.7	92.0	55.6	91.3	78.4	78.5
top50	63.9	88.2	83.3	88.6	81.0	67.2	88.2	66.7	87.1	77.3	79.2
ZeroR	49.9	49.7	50.7	50.3	50.1	49.9	49.7	50.7	50.3	50.1	50.1
top10	50.0	50.0	52.2	50.8	50.7	50.0	50.0	52.2	50.8	50.7	50.7
top25	50.5	52.0	50.0	50.0	50.6	50.5	52.0	50.0	50.0	50.6	50.6
top50	49.2	47.1	50.0	50.0	49.1	49.2	47.1	50.0	50.0	49.1	49.1
Grand Total	76.3	90.4	73.0	84.2	81.0	79.3	90.4	68.9	85.5	81.0	81.0

**Table 28.** Prediction - Accuracy results for EPL. First columns for filter attributes, last columns for wrapper attributes.

Classifier	Filter					Wrapper					GAV
	DF	FW	GK	MD	AV	DF	FW	GK	MD	AV	
NaiveBayes	81.5	94.4	84.7	88.0	87.2	82.6	91.7	87.7	90.1	88.0	87.6
top10	83.6	93.3	89.7	89.9	89.1	81.8	93.3	96.6	91.2	90.7	89.9
top25	83.5	96.0	83.3	86.3	87.3	90.1	88.0	91.7	93.5	90.8	89.1
top50	77.4	93.8	81.3	88.0	85.1	75.8	93.8	75.0	85.5	82.5	83.8
RandomForest	81.5	94.5	80.6	90.1	86.7	84.0	96.6	78.7	91.0	87.6	87.1
top10	87.3	100.0	89.7	92.6	92.4	93.6	100.0	86.2	94.6	93.6	93.0
top25	84.6	96.0	95.8	88.7	91.3	89.0	96.0	87.5	92.7	91.3	91.3
top50	72.6	87.5	56.3	89.2	76.4	69.4	93.8	62.5	85.5	77.8	77.1
Logistic	78.3	91.7	82.7	90.9	85.9	84.7	92.3	74.6	92.6	86.0	86.0
top10	85.5	93.3	89.7	95.3	90.9	94.5	93.3	86.2	94.6	92.2	91.5
top25	76.9	88.0	95.8	89.5	87.6	93.4	96.0	87.5	95.2	93.0	90.3
top50	72.6	93.8	62.5	88.0	79.2	66.1	87.5	50.0	88.0	72.9	76.0
BayesNet	78.7	95.5	73.4	89.3	84.2	86.7	94.1	74.1	92.4	86.8	85.5
top10	82.7	96.7	82.8	92.6	88.7	96.4	96.7	93.1	95.3	95.4	92.0
top25	79.1	96.0	87.5	88.7	87.8	91.2	92.0	91.7	95.2	92.5	90.2
top50	74.2	93.8	50.0	86.7	76.2	72.6	93.8	37.5	86.7	72.6	74.4
J48	80.1	96.6	69.2	88.4	83.6	80.7	96.6	74.1	88.3	84.9	84.2
top10	86.4	100.0	93.1	92.6	93.0	85.5	100.0	93.1	92.6	92.8	92.9
top25	84.6	96.0	70.8	89.5	85.2	82.4	96.0	79.2	87.9	86.4	85.8
top50	69.4	93.8	43.8	83.1	72.5	74.2	93.8	50.0	84.3	75.6	74.0
IBk	80.0	93.2	72.5	88.7	83.6	78.6	93.0	77.6	88.4	84.4	84.0
top10	85.5	100.0	86.2	91.9	90.9	95.5	93.3	93.1	93.2	93.8	92.3
top25	80.2	92.0	75.0	86.3	83.4	82.4	92.0	83.3	93.5	87.8	85.6
top50	74.2	87.5	56.3	88.0	76.5	58.1	93.8	56.3	78.3	71.6	74.0
DecisionTable	79.7	96.6	66.5	88.1	82.7	79.5	96.6	72.0	91.2	84.8	83.8
top10	83.6	100.0	82.8	87.2	88.4	87.3	100.0	82.8	96.6	91.7	90.0
top25	81.3	96.0	66.7	90.3	83.6	76.9	96.0	83.3	92.7	87.2	85.4
top50	74.2	93.8	50.0	86.7	76.2	74.2	93.8	50.0	84.3	75.6	75.9
PART	80.6	94.5	68.3	89.0	83.1	78.8	94.5	69.0	87.6	82.5	82.8
top10	86.4	100.0	86.2	89.9	90.6	91.8	100.0	86.2	91.2	92.3	91.5
top25	84.6	96.0	75.0	90.3	86.5	70.3	96.0	70.8	87.1	81.1	83.8
top50	71.0	87.5	43.8	86.7	72.2	74.2	87.5	50.0	84.3	74.0	73.1
ZeroR	50.2	49.3	50.6	50.2	50.1	50.2	49.3	50.6	50.2	50.1	50.1
top10	50.0	50.0	51.7	50.0	50.4	50.0	50.0	51.7	50.0	50.4	50.4
top25	50.5	48.0	50.0	50.0	49.6	50.5	48.0	50.0	50.0	49.6	49.6
top50	50.0	50.0	50.0	50.6	50.2	50.0	50.0	50.0	50.6	50.2	50.2
Grand Total	76.7	89.6	72.1	84.8	80.8	78.4	89.4	73.2	85.7	81.7	81.2

**Table 29.** Prediction - Accuracy results for La Liga. First columns for filter attributes, last columns for wrapper attributes.

	Filter					Wrapper					GAV
	DF	FW	GK	MD	AV	DF	FW	GK	MD	AV	
RandomForest	82.6	86.9	85.1	89.2	85.9	87.4	90.4	82.4	90.3	87.6	86.8
top10	92.6	90.3	100.0	93.8	94.2	92.6	93.5	96.2	96.6	94.7	94.4
top25	84.0	92.6	81.8	90.9	87.3	91.0	100.0	90.9	94.2	94.0	90.7
top50	71.2	77.8	73.3	82.7	76.3	78.8	77.8	60.0	80.2	74.2	75.2
BayesNet	79.0	86.9	85.3	86.4	84.4	88.3	90.4	85.3	90.2	88.5	86.5
top10	84.3	90.3	96.2	93.8	91.2	97.5	93.5	96.2	97.3	96.1	93.6
top25	83.0	92.6	86.4	87.6	87.4	90.0	100.0	86.4	94.2	92.6	90.0
top50	69.7	77.8	73.3	77.8	74.6	77.3	77.8	73.3	79.0	76.8	75.7
Logistic	80.8	79.5	81.1	90.5	83.0	89.0	90.0	87.7	91.3	89.5	86.2
top10	87.6	77.4	92.3	95.9	88.3	95.0	90.3	92.3	95.2	93.2	90.8
top25	79.0	88.9	90.9	91.7	87.6	90.0	96.3	90.9	90.9	92.0	89.8
top50	75.8	72.2	60.0	84.0	73.0	81.8	83.3	80.0	87.7	83.2	78.1
IBk	76.5	86.3	86.8	85.6	83.8	84.3	88.0	78.3	87.5	84.5	84.2
top10	84.3	90.3	96.2	95.9	91.7	90.1	93.5	88.5	97.9	92.5	92.1
top25	68.0	96.3	90.9	86.8	85.5	90.0	92.6	86.4	91.7	90.2	87.8
top50	77.3	72.2	73.3	74.1	74.2	72.7	77.8	60.0	72.8	70.8	72.5
NaiveBayes	79.0	86.9	75.5	88.1	82.4	88.4	88.1	71.7	91.4	84.9	83.7
top10	86.8	90.3	84.6	92.5	88.5	93.4	90.3	84.6	94.5	90.7	89.6
top25	79.0	92.6	81.8	89.3	85.7	90.0	96.3	77.3	93.4	89.2	87.5
top50	71.2	77.8	60.0	82.7	72.9	81.8	77.8	53.3	86.4	74.8	73.9
DecisionTable	78.7	86.7	79.2	86.8	82.8	82.8	84.9	80.7	86.2	83.7	83.2
top10	89.3	93.5	96.2	94.5	93.4	87.6	93.5	96.2	95.2	93.1	93.2
top25	74.0	88.9	68.2	91.7	80.7	82.0	88.9	72.7	89.3	83.2	82.0
top50	72.7	77.8	73.3	74.1	74.5	78.8	72.2	73.3	74.1	74.6	74.5
PART	79.5	89.8	73.2	87.9	82.6	82.9	88.6	73.2	85.0	82.4	82.5
top10	90.9	93.5	96.2	95.9	94.1	95.9	93.5	96.2	90.4	94.0	94.1
top25	75.0	92.6	50.0	90.1	76.9	80.0	88.9	50.0	89.3	77.0	77.0
top50	72.7	83.3	73.3	77.8	76.8	72.7	83.3	73.3	75.3	76.2	76.5
J48	77.8	89.8	73.2	89.5	82.6	80.2	88.6	73.2	85.9	82.0	82.3
top10	87.6	93.5	96.2	95.2	93.1	92.6	93.5	96.2	91.8	93.5	93.3
top25	76.0	92.6	50.0	91.7	77.6	80.0	88.9	50.0	91.7	77.7	77.6
top50	69.7	83.3	73.3	81.5	77.0	68.2	83.3	73.3	74.1	74.7	75.8
ZeroR	50.1	49.9	50.2	49.9	50.0	50.1	49.9	50.2	49.9	50.0	50.0
top10	50.4	51.6	53.8	50.7	51.6	50.4	51.6	53.8	50.7	51.6	51.6
top25	50.0	48.1	50.0	49.6	49.4	50.0	48.1	50.0	49.6	49.4	49.4
top50	50.0	50.0	46.7	49.4	49.0	50.0	50.0	46.7	49.4	49.0	49.0
Grand Total	76.0	82.5	76.6	83.8	79.7	81.5	84.3	75.8	84.2	81.5	80.6

**Table 30.** Prediction - Accuracy results for Ligue 1. First columns for filter attributes, last columns for wrapper attributes.

Classifier	Filter					Wrapper					GAV
	DF	FW	GK	MD	AV	DF	FW	GK	MD	AV	
Logistic	88.8	88.1	63.7	85.7	81.6	88.1	91.6	66.3	92.1	84.5	83.0
top10	92.7	89.5	69.2	89.2	85.2	94.5	100.	88.5	94.6	94.4	89.8
top25	88.0	93.9	81.8	84.8	87.2	89.1	93.9	63.6	88.8	83.9	85.5
top50	85.5	81.0	40.0	83.1	72.4	80.6	81.0	46.7	92.8	75.3	73.8
NaiveBayes	87.3	86.5	71.4	79.3	81.1	85.4	88.0	72.0	86.5	83.0	82.1
top10	90.0	92.1	76.9	76.4	83.8	90.9	100.	92.3	85.1	92.1	88.0
top25	84.8	81.8	77.3	78.4	80.6	81.5	87.9	63.6	86.4	79.9	80.2
top50	87.1	85.7	60.0	83.1	79.0	83.9	76.2	60.0	88.0	77.0	78.0
Rand.Forest	85.6	85.4	70.7	86.5	82.0	84.0	90.6	65.3	86.5	81.6	81.8
top10	94.5	92.1	76.9	91.9	88.9	94.5	100.	92.3	91.2	94.5	91.7
top25	84.8	87.9	81.8	83.2	84.4	81.5	90.9	63.6	84.0	80.0	82.2
top50	77.4	76.2	53.3	84.3	72.8	75.8	81.0	40.0	84.3	70.3	71.5
IBk	84.0	86.2	71.5	87.6	82.3	87.6	86.6	64.0	85.3	80.9	81.6
top10	94.5	86.8	76.9	90.5	87.2	93.6	97.4	88.5	93.2	93.2	90.2
top25	84.8	90.9	90.9	88.0	88.7	87.0	90.9	63.6	90.4	83.0	85.8
top50	72.6	81.0	46.7	84.3	71.1	82.3	71.4	40.0	72.3	66.5	68.8
BayesNet	82.0	84.1	69.9	82.3	79.5	87.1	91.6	61.0	86.6	81.6	80.6
top10	89.1	89.5	76.9	82.4	84.5	95.5	100.	88.5	88.5	93.1	88.8
top25	82.6	81.8	72.7	80.0	79.3	83.7	93.9	54.5	85.6	79.4	79.4
top50	74.2	81.0	60.0	84.3	74.9	82.3	81.0	40.0	85.5	72.2	73.5
PART	84.6	84.1	68.9	83.9	80.4	77.4	89.6	72.1	82.5	80.4	80.4
top10	93.6	86.8	80.8	91.9	88.3	91.8	100.	92.3	89.2	93.3	90.8
top25	85.9	93.9	72.7	86.4	84.7	66.3	87.9	77.3	77.6	77.3	81.0
top50	74.2	71.4	53.3	73.5	68.1	74.2	81.0	46.7	80.7	70.6	69.4
J48	85.9	84.1	66.7	83.2	80.0	76.9	88.6	75.1	80.9	80.4	80.2
top10	95.5	86.8	80.8	87.8	87.7	91.8	100.	92.3	86.5	92.7	90.2
top25	81.5	93.9	72.7	84.8	83.2	66.3	84.8	86.4	84.0	80.4	81.8
top50	80.6	71.4	46.7	77.1	69.0	72.6	81.0	46.7	72.3	68.1	68.5
Dec.Table	76.0	83.5	73.7	81.9	78.8	77.8	86.8	61.7	86.6	78.2	78.5
top10	80.9	89.5	88.5	81.1	85.0	80.9	94.7	88.5	93.9	89.5	87.2
top25	69.6	84.8	72.7	81.6	77.2	75.0	84.8	50.0	81.6	72.9	75.0
top50	77.4	76.2	60.0	83.1	74.2	77.4	81.0	46.7	84.3	72.3	73.3
ZeroR	50.0	49.6	50.2	49.9	49.9	50.0	49.6	50.2	49.9	49.9	49.9
top10	50.0	52.6	53.8	50.7	51.8	50.0	52.6	53.8	50.7	51.8	51.8
top25	50.0	48.5	50.0	49.6	49.5	50.0	48.5	50.0	49.6	49.5	49.5
top50	50.0	47.6	46.7	49.4	48.4	50.0	47.6	46.7	49.4	48.4	48.4
Grand Total	80.4	81.3	67.4	80.0	77.3	79.4	84.8	65.3	81.9	77.8	77.6

**Table 31.** Prediction - Accuracy results for Serie A. First columns for filter attributes, last columns for wrapper attributes.

Classifier	Filter					Wrapper					GAV
	DF	FW	GK	MD	AV	DF	FW	GK	MD	AV	
BayesNet	85.1	95.3	68.9	84.8	83.5	86.2	95.3	71.1	84.5	84.3	83.9
top10	92.6	100.0	90.0	95.2	94.4	93.4	100.0	96.7	95.2	96.3	95.4
top25	84.0	94.3	52.0	90.6	80.2	88.0	94.3	52.0	86.8	80.3	80.2
top50	78.8	91.7	64.7	68.6	75.9	77.3	91.7	64.7	71.4	76.3	76.1
DecisionTable	85.0	89.0	70.4	78.9	80.8	85.0	91.3	70.4	78.2	81.2	81.0
top10	92.6	95.2	76.7	91.9	89.1	92.6	95.2	76.7	93.5	89.5	89.3
top25	79.0	88.6	64.0	84.9	79.1	79.0	82.9	64.0	81.1	76.7	77.9
top50	83.3	83.3	70.6	60.0	74.3	83.3	95.8	70.6	60.0	77.4	75.9
IBk	90.2	91.3	84.2	81.5	86.8	82.5	90.2	74.2	85.9	83.2	85.0
top10	91.7	97.6	100.0	91.9	95.3	91.7	100.0	80.0	91.9	90.9	93.1
top25	88.0	97.1	88.0	92.5	91.4	86.0	91.4	72.0	94.3	85.9	88.7
top50	90.9	79.2	64.7	60.0	73.7	69.7	79.2	70.6	71.4	72.7	73.2
J48	86.8	92.3	75.8	81.0	84.0	80.9	94.2	75.8	81.5	83.1	83.5
top10	88.4	95.2	76.7	93.5	88.5	86.8	95.2	76.7	91.9	87.7	88.1
top25	87.0	94.3	80.0	92.5	88.4	74.0	91.4	80.0	81.1	81.6	85.0
top50	84.8	87.5	70.6	57.1	75.0	81.8	95.8	70.6	71.4	79.9	77.5
Logistic	92.4	85.2	78.2	79.9	83.9	87.2	96.9	75.8	86.6	86.6	85.2
top10	94.2	97.6	90.0	91.9	93.4	94.2	97.6	76.7	96.8	91.3	92.4
top25	89.0	82.9	68.0	90.6	82.6	90.0	97.1	80.0	94.3	90.4	86.5
top50	93.9	75.0	76.5	57.1	75.6	77.3	95.8	70.6	68.6	78.1	76.9
NaiveBayes	88.0	95.1	76.2	85.7	86.3	92.9	96.9	75.3	89.7	88.7	87.5
top10	88.4	95.2	80.0	95.2	89.7	94.2	97.6	73.3	96.8	90.5	90.1
top25	83.0	94.3	84.0	90.6	88.0	92.0	97.1	76.0	92.5	89.4	88.7
top50	92.4	95.8	64.7	71.4	81.1	92.4	95.8	76.5	80.0	86.2	83.6
PART	86.3	93.3	69.7	79.8	82.3	78.1	94.2	67.8	82.6	80.7	81.5
top10	90.1	95.2	76.7	93.5	88.9	91.7	95.2	76.7	95.2	89.7	89.3
top25	84.0	97.1	56.0	88.7	81.5	73.0	91.4	56.0	81.1	75.4	78.4
top50	84.8	87.5	76.5	57.1	76.5	69.7	95.8	70.6	71.4	76.9	76.7
RandomForest	87.4	96.3	79.5	86.0	87.3	83.1	95.9	77.6	86.6	85.8	86.5
top10	93.4	100.0	100.0	95.2	97.1	92.6	97.6	80.0	96.8	91.7	94.4
top25	87.0	97.1	68.0	94.3	86.6	81.0	94.3	88.0	88.7	88.0	87.3
top50	81.8	91.7	70.6	68.6	78.2	75.8	95.8	64.7	74.3	77.6	77.9
ZeroR	50.1	49.5	49.7	51.3	50.2	50.1	49.5	49.7	51.3	50.2	50.2
top10	50.4	50.0	50.0	51.6	50.5	50.4	50.0	50.0	51.6	50.5	50.5
top25	50.0	48.6	52.0	50.9	50.4	50.0	48.6	52.0	50.9	50.4	50.4
top50	50.0	50.0	47.1	51.4	49.6	50.0	50.0	47.1	51.4	49.6	49.6
Grand Total	83.5	87.5	72.5	78.8	80.6	80.7	89.4	70.8	80.8	80.4	80.5

## G Prediction - F-measure results for individual leagues

**Table 32.** Prediction - F-measure results for Bundesliga. First columns for filter attributes, last columns for wrapper attributes.

Classifier	Filter					Wrapper					GAV
	DF	FW	GK	MD	AV	DF	FW	GK	MD	AV	
NaiveBayes	0.79	0.99	0.75	0.88	0.85	0.86	0.98	0.79	0.94	0.89	0.87
top10	0.82	1.00	0.67	0.89	0.84	0.96	0.97	0.86	0.92	0.93	0.89
top25	0.77	0.96	0.84	0.85	0.86	0.88	0.96	0.89	0.95	0.92	0.89
top50	0.79	1.00	0.73	0.90	0.85	0.74	1.00	0.62	0.93	0.82	0.84
PART	0.81	0.93	0.82	0.88	0.86	0.82	0.93	0.81	0.88	0.86	0.86
top10	0.89	1.00	0.87	0.91	0.92	0.94	1.00	0.87	0.89	0.92	0.92
top25	0.83	0.91	0.80	0.88	0.85	0.75	0.91	0.80	0.87	0.83	0.84
top50	0.70	0.89	0.80	0.86	0.81	0.78	0.89	0.75	0.88	0.82	0.82
BayesNet	0.78	0.99	0.72	0.90	0.85	0.86	0.97	0.75	0.91	0.87	0.86
top10	0.89	0.97	0.82	0.91	0.90	0.97	0.97	0.92	0.94	0.95	0.92
top25	0.75	1.00	0.80	0.90	0.86	0.92	1.00	0.80	0.91	0.91	0.89
top50	0.70	1.00	0.55	0.88	0.78	0.68	0.95	0.55	0.86	0.76	0.77
Logistic	0.79	0.97	0.76	0.89	0.85	0.84	0.96	0.71	0.92	0.86	0.86
top10	0.85	0.97	0.76	0.91	0.87	0.97	0.97	0.88	0.93	0.94	0.91
top25	0.77	1.00	0.80	0.91	0.87	0.90	0.96	0.84	0.96	0.92	0.89
top50	0.74	0.94	0.73	0.85	0.82	0.65	0.95	0.40	0.87	0.72	0.77
J48	0.78	0.93	0.82	0.89	0.85	0.80	0.93	0.76	0.88	0.84	0.85
top10	0.90	1.00	0.87	0.94	0.93	0.86	1.00	0.87	0.89	0.90	0.92
top25	0.76	0.91	0.78	0.87	0.83	0.77	0.91	0.67	0.87	0.80	0.82
top50	0.68	0.89	0.80	0.85	0.81	0.78	0.89	0.75	0.88	0.83	0.82
RandomForest	0.83	0.97	0.73	0.90	0.86	0.86	0.97	0.56	0.88	0.82	0.84
top10	0.92	1.00	0.82	0.97	0.93	0.96	0.97	0.77	0.92	0.91	0.92
top25	0.83	0.91	0.71	0.88	0.83	0.88	0.96	0.74	0.90	0.87	0.85
top50	0.72	1.00	0.67	0.87	0.81	0.75	1.00	0.18	0.82	0.69	0.75
IBk	0.80	0.92	0.56	0.87	0.79	0.83	0.97	0.72	0.89	0.85	0.82
top10	0.90	1.00	0.78	0.94	0.91	0.96	1.00	0.89	0.94	0.95	0.93
top25	0.81	0.96	0.29	0.86	0.73	0.88	0.96	0.74	0.94	0.88	0.80
top50	0.69	0.80	0.60	0.81	0.73	0.67	0.94	0.55	0.78	0.73	0.73
DecisionTable	0.75	0.92	0.79	0.86	0.83	0.77	0.92	0.63	0.91	0.81	0.82
top10	0.90	0.97	0.82	0.87	0.89	0.88	0.97	0.82	0.93	0.90	0.89
top25	0.70	0.91	0.75	0.83	0.80	0.76	0.91	0.33	0.91	0.73	0.76
top50	0.65	0.89	0.80	0.89	0.81	0.68	0.89	0.75	0.88	0.80	0.80
ZeroR	0.66	0.67	0.67	1.00	0.67	0.66	0.67	0.67	1.00	0.67	0.67
top10	0.67	0.67	0.69	1.00	0.67	0.67	0.67	0.69	1.00	0.67	0.67
top25	1.00	1.00	0.67	1.00	0.67	1.00	1.00	0.67	1.00	0.67	0.67
top50	0.66	1.00	0.67	1.00	0.66	0.66	1.00	0.67	1.00	0.66	0.66
Grand Total	0.78	0.94	0.74	0.88	0.83	0.82	0.94	0.71	0.90	0.84	0.84

**Table 33.** Prediction - F-measure results for EPL. First columns for filter attributes, last columns for wrapper attributes.

Classifier	Filter					Wrapper					GAV
	DF	FW	GK	MD	AV	DF	FW	GK	MD	AV	
NaiveBayes	0.81	0.95	0.84	0.88	0.87	0.82	0.93	0.86	0.90	0.88	0.87
top10	0.83	0.94	0.91	0.91	0.90	0.84	0.94	0.97	0.92	0.91	0.91
top25	0.84	0.96	0.82	0.87	0.87	0.90	0.90	0.91	0.94	0.91	0.89
top50	0.76	0.94	0.80	0.87	0.84	0.73	0.94	0.71	0.84	0.81	0.82
RandomForest	0.82	0.95	0.82	0.90	0.87	0.83	0.97	0.77	0.90	0.87	0.87
top10	0.88	1.00	0.90	0.93	0.93	0.94	1.00	0.87	0.95	0.94	0.93
top25	0.86	0.96	0.96	0.89	0.92	0.89	0.96	0.87	0.93	0.91	0.92
top50	0.71	0.89	0.59	0.89	0.77	0.65	0.94	0.57	0.84	0.75	0.76
J48	0.81	0.97	0.74	0.88	0.85	0.81	0.97	0.81	0.88	0.87	0.86
top10	0.86	1.00	0.94	0.93	0.93	0.86	1.00	0.94	0.93	0.93	0.93
top25	0.86	0.96	0.72	0.90	0.86	0.85	0.96	0.81	0.89	0.88	0.87
top50	0.70	0.93	0.57	0.81	0.75	0.73	0.93	0.67	0.83	0.79	0.77
Logistic	0.78	0.92	0.81	0.91	0.85	0.84	0.93	0.74	0.93	0.86	0.85
top10	0.85	0.94	0.90	0.95	0.91	0.95	0.94	0.85	0.95	0.92	0.91
top25	0.77	0.89	0.96	0.90	0.88	0.94	0.96	0.87	0.95	0.93	0.90
top50	0.71	0.93	0.57	0.87	0.77	0.63	0.88	0.50	0.88	0.72	0.75
DecisionTable	0.81	0.97	0.72	0.89	0.85	0.81	0.97	0.77	0.91	0.86	0.85
top10	0.85	1.00	0.84	0.88	0.89	0.88	1.00	0.84	0.97	0.92	0.91
top25	0.84	0.96	0.67	0.91	0.84	0.79	0.96	0.82	0.93	0.87	0.86
top50	0.73	0.93	0.67	0.87	0.80	0.75	0.93	0.67	0.83	0.80	0.80
BayesNet	0.79	0.96	0.79	0.89	0.86	0.85	0.95	0.62	0.92	0.83	0.85
top10	0.83	0.97	0.85	0.93	0.89	0.96	0.97	0.93	0.95	0.96	0.92
top25	0.80	0.96	0.87	0.89	0.88	0.92	0.93	0.92	0.95	0.93	0.91
top50	0.73	0.94	0.67	0.86	0.80	0.68	0.94	0.00	0.85	0.62	0.71
IBk	0.80	0.93	0.76	0.89	0.85	0.76	0.93	0.76	0.88	0.83	0.84
top10	0.85	1.00	0.87	0.92	0.91	0.96	0.94	0.93	0.94	0.94	0.93
top25	0.81	0.93	0.77	0.87	0.85	0.83	0.93	0.82	0.94	0.88	0.86
top50	0.75	0.88	0.63	0.86	0.78	0.50	0.93	0.53	0.77	0.68	0.73
PART	0.81	0.95	0.74	0.89	0.84	0.81	0.95	0.71	0.87	0.83	0.84
top10	0.86	1.00	0.87	0.90	0.91	0.92	1.00	0.87	0.91	0.93	0.92
top25	0.86	0.96	0.77	0.91	0.87	0.77	0.96	0.59	0.87	0.80	0.84
top50	0.70	0.88	0.57	0.85	0.75	0.73	0.88	0.67	0.83	0.78	0.76
ZeroR	0.67	0.67	0.67	0.67	0.67	0.67	0.67	0.67	0.67	0.67	0.67
top10	0.67	0.67	0.68	1.00	0.67	0.67	0.67	0.68	1.00	0.67	0.67
top25	0.67	1.00	0.67	0.67	0.67	0.67	1.00	0.67	0.67	0.67	0.67
top50	0.67	1.00	0.67	0.67	0.67	0.67	1.00	0.67	0.67	0.67	0.67
Grand Total	0.79	0.94	0.77	0.87	0.84	0.80	0.94	0.75	0.88	0.84	0.84

**Table 34.** Prediction - F-measure results for La Liga. First columns for filter attributes, last columns for wrapper attributes.

Classifier	Filter					Wrapper					GAV
	DF	FW	GK	MD	AV	DF	FW	GK	MD	AV	
RandomForest	0.83	0.87	0.85	0.89	0.86	0.88	0.90	0.83	0.90	0.88	0.87
top10	0.93	0.90	1.00	0.94	0.94	0.93	0.93	0.96	0.97	0.95	0.95
top25	0.85	0.93	0.83	0.91	0.88	0.92	1.00	0.91	0.94	0.94	0.91
top50	0.72	0.78	0.71	0.83	0.76	0.79	0.78	0.63	0.79	0.75	0.75
Logistic	0.81	0.79	0.82	0.91	0.83	0.89	0.90	0.88	0.91	0.90	0.86
top10	0.88	0.76	0.92	0.96	0.88	0.95	0.90	0.92	0.95	0.93	0.90
top25	0.80	0.90	0.91	0.91	0.88	0.91	0.96	0.91	0.91	0.92	0.90
top50	0.76	0.71	0.63	0.85	0.73	0.82	0.84	0.82	0.88	0.84	0.79
BayesNet	0.80	0.87	0.83	0.87	0.84	0.88	0.90	0.83	0.90	0.88	0.86
top10	0.85	0.90	0.96	0.94	0.91	0.98	0.93	0.96	0.97	0.96	0.94
top25	0.84	0.93	0.87	0.88	0.88	0.90	1.00	0.87	0.94	0.93	0.90
top50	0.71	0.78	0.67	0.79	0.74	0.75	0.78	0.67	0.80	0.75	0.74
IBk	0.76	0.86	0.87	0.87	0.84	0.85	0.88	0.79	0.88	0.85	0.85
top10	0.86	0.90	0.96	0.96	0.92	0.91	0.94	0.89	0.98	0.93	0.92
top25	0.67	0.96	0.91	0.88	0.86	0.90	0.93	0.87	0.92	0.90	0.88
top50	0.76	0.71	0.75	0.76	0.74	0.75	0.78	0.63	0.73	0.72	0.73
NaiveBayes	0.79	0.87	0.77	0.88	0.83	0.88	0.88	0.76	0.91	0.86	0.84
top10	0.88	0.90	0.86	0.93	0.89	0.94	0.90	0.86	0.95	0.91	0.90
top25	0.80	0.93	0.83	0.89	0.86	0.91	0.96	0.80	0.93	0.90	0.88
top50	0.71	0.78	0.63	0.83	0.73	0.81	0.78	0.63	0.86	0.77	0.75
PART	0.79	0.89	0.78	0.88	0.84	0.83	0.88	0.78	0.85	0.84	0.84
top10	0.91	0.93	0.96	0.96	0.94	0.96	0.93	0.96	0.90	0.94	0.94
top25	0.79	0.92	0.67	0.90	0.82	0.82	0.89	0.67	0.88	0.81	0.82
top50	0.67	0.82	0.71	0.78	0.74	0.73	0.82	0.71	0.77	0.76	0.75
J48	0.77	0.89	0.78	0.90	0.84	0.80	0.88	0.78	0.87	0.83	0.83
top10	0.88	0.93	0.96	0.95	0.93	0.93	0.93	0.96	0.92	0.94	0.93
top25	0.76	0.92	0.67	0.92	0.82	0.82	0.89	0.67	0.92	0.82	0.82
top50	0.67	0.82	0.71	0.82	0.76	0.64	0.82	0.71	0.76	0.74	0.75
DecisionTable	0.79	0.87	0.79	0.86	0.83	0.84	0.86	0.78	0.86	0.84	0.83
top10	0.89	0.93	0.96	0.95	0.93	0.89	0.93	0.96	0.95	0.93	0.93
top25	0.74	0.89	0.70	0.92	0.81	0.84	0.89	0.67	0.90	0.82	0.82
top50	0.75	0.78	0.71	0.72	0.74	0.79	0.76	0.71	0.74	0.75	0.75
ZeroR	0.67	0.65	0.65	0.67	0.66	0.67	0.65	0.65	0.67	0.66	0.66
top10	0.67	/0	/0	0.67	0.67	0.67	/0	/0	0.67	0.67	0.67
top25	0.67	0.65	0.67	0.66	0.66	0.67	0.65	0.67	0.66	0.66	0.66
top50	0.67	/0	0.64	0.66	0.65	0.67	/0	0.64	0.66	0.65	0.65
Grand Total	0.78	0.85	0.80	0.86	0.82	0.84	0.88	0.79	0.86	0.84	0.83



**Table 35.** Prediction - F-measure results for Ligue 1. First columns for filter attributes, last columns for wrapper attributes.

Classifier	Filter					Wrapper					GAV
	DF	FW	GK	MD	AV	DF	FW	GK	MD	AV	
RandomForest	0.86	0.84	0.82	0.87	0.85	0.85	0.89	0.59	0.87	0.80	0.82
top10	0.94	0.92	0.80	0.92	0.90	0.95	1.00	0.91	0.92	0.94	0.92
top25	0.85	0.87	0.85	0.84	0.85	0.83	0.90	0.67	0.85	0.81	0.83
top50	0.79	0.74	/0	0.84	0.79	0.77	0.78	0.18	0.83	0.64	0.70
Logistic	0.89	0.87	0.59	0.86	0.80	0.88	0.91	0.62	0.92	0.83	0.82
top10	0.92	0.88	0.73	0.89	0.86	0.95	1.00	0.87	0.95	0.94	0.90
top25	0.88	0.94	0.85	0.85	0.88	0.90	0.94	0.67	0.88	0.85	0.86
top50	0.86	0.78	0.18	0.83	0.66	0.81	0.78	0.33	0.92	0.71	0.69
NaiveBayes	0.88	0.87	0.62	0.79	0.79	0.86	0.87	0.73	0.87	0.83	0.81
top10	0.90	0.92	0.80	0.76	0.85	0.92	1.00	0.92	0.86	0.92	0.88
top25	0.85	0.83	0.81	0.78	0.82	0.84	0.88	0.71	0.87	0.83	0.82
top50	0.88	0.84	0.25	0.82	0.70	0.83	0.74	0.57	0.87	0.75	0.73
PART	0.85	0.84	0.69	0.83	0.80	0.81	0.89	0.75	0.83	0.82	0.81
top10	0.93	0.87	0.81	0.92	0.89	0.92	1.00	0.91	0.90	0.93	0.91
top25	0.86	0.94	0.79	0.87	0.87	0.74	0.88	0.71	0.81	0.78	0.82
top50	0.74	0.70	0.46	0.71	0.65	0.77	0.78	0.64	0.77	0.74	0.70
J48	0.86	0.84	0.64	0.83	0.79	0.81	0.88	0.80	0.81	0.82	0.81
top10	0.96	0.87	0.81	0.88	0.88	0.92	1.00	0.91	0.88	0.93	0.90
top25	0.82	0.94	0.79	0.85	0.85	0.74	0.85	0.84	0.85	0.82	0.84
top50	0.81	0.70	0.33	0.76	0.65	0.75	0.78	0.64	0.69	0.72	0.68
IBk	0.83	0.85	0.72	0.88	0.82	0.88	0.86	0.57	0.85	0.79	0.80
top10	0.95	0.86	0.80	0.91	0.88	0.94	0.97	0.87	0.94	0.93	0.90
top25	0.84	0.91	0.92	0.89	0.89	0.88	0.91	0.67	0.91	0.84	0.87
top50	0.70	0.78	0.43	0.84	0.69	0.82	0.70	0.18	0.70	0.60	0.64
BayesNet	0.83	0.83	0.61	0.82	0.77	0.87	0.91	0.56	0.87	0.80	0.79
top10	0.88	0.88	0.79	0.83	0.84	0.95	1.00	0.88	0.89	0.93	0.89
top25	0.83	0.82	0.79	0.81	0.81	0.84	0.94	0.62	0.87	0.82	0.81
top50	0.78	0.78	0.25	0.83	0.66	0.83	0.78	0.18	0.85	0.66	0.66
DecisionTable	0.74	0.83	0.63	0.82	0.76	0.78	0.86	0.73	0.87	0.81	0.78
top10	0.80	0.90	0.86	0.80	0.84	0.80	0.94	0.86	0.93	0.88	0.86
top25	0.64	0.86	0.79	0.83	0.78	0.75	0.85	/0	0.83	0.81	0.79
top50	0.78	0.74	0.25	0.83	0.65	0.79	0.78	0.60	0.84	0.75	0.70
ZeroR	/0	0.65	0.64	0.66	0.65	/0	0.65	0.64	0.66	0.65	0.65
top10	/0	/0	/0	/0	/0	/0	/0	/0	/0	/0	/0
top25	/0	/0	/0	0.66	0.66	/0	/0	/0	0.66	0.66	0.66
top50	/0	0.65	0.64	0.66	0.65	/0	0.65	0.64	0.66	0.65	0.65
Grand Total	0.84	0.84	0.66	0.82	0.79	0.84	0.87	0.66	0.84	0.81	0.80

**Table 36.** Prediction - F-measure results for Serie A. First columns for filter attributes, last columns for wrapper attributes.

Classifier	Filter					Wrapper					GAV
	DF	FW	GK	MD	AV	DF	FW	GK	MD	AV	
NaiveBayes	0.88	0.95	0.76	0.86	0.86	0.93	0.97	0.77	0.89	0.89	0.88
top10	0.89	0.95	0.82	0.95	0.91	0.94	0.98	0.78	0.97	0.92	0.91
top25	0.83	0.94	0.83	0.91	0.88	0.92	0.97	0.77	0.93	0.90	0.89
top50	0.92	0.96	0.63	0.72	0.81	0.92	0.96	0.75	0.79	0.86	0.83
RandomForest	0.88	0.96	0.80	0.87	0.88	0.84	0.96	0.78	0.87	0.86	0.87
top10	0.94	1.00	1.00	0.95	0.97	0.93	0.98	0.82	0.97	0.92	0.95
top25	0.87	0.97	0.69	0.94	0.87	0.82	0.94	0.89	0.90	0.89	0.88
top50	0.83	0.92	0.71	0.72	0.79	0.78	0.96	0.63	0.76	0.78	0.79
BayesNet	0.85	0.95	0.77	0.86	0.86	0.87	0.96	0.79	0.85	0.86	0.86
top10	0.93	1.00	0.90	0.95	0.95	0.93	1.00	0.97	0.95	0.96	0.95
top25	0.84	0.94	0.67	0.90	0.84	0.88	0.94	0.67	0.87	0.84	0.84
top50	0.79	0.92	0.73	0.72	0.79	0.79	0.92	0.73	0.72	0.79	0.79
Logistic	0.92	0.86	0.78	0.81	0.85	0.88	0.97	0.76	0.87	0.87	0.86
top10	0.94	0.98	0.91	0.91	0.94	0.94	0.98	0.80	0.97	0.92	0.93
top25	0.89	0.84	0.69	0.91	0.83	0.89	0.97	0.78	0.95	0.90	0.87
top50	0.94	0.77	0.75	0.62	0.77	0.79	0.96	0.71	0.70	0.79	0.78
IBk	0.91	0.92	0.82	0.81	0.86	0.83	0.91	0.75	0.85	0.84	0.85
top10	0.92	0.98	1.00	0.92	0.95	0.92	1.00	0.83	0.92	0.92	0.94
top25	0.88	0.97	0.89	0.93	0.92	0.86	0.91	0.72	0.95	0.86	0.89
top50	0.91	0.80	0.57	0.59	0.72	0.71	0.81	0.71	0.69	0.73	0.72
J48	0.87	0.92	0.70	0.82	0.83	0.83	0.94	0.70	0.82	0.82	0.82
top10	0.89	0.95	0.70	0.93	0.87	0.88	0.95	0.70	0.92	0.86	0.86
top25	0.87	0.94	0.74	0.92	0.87	0.77	0.91	0.74	0.83	0.81	0.84
top50	0.85	0.88	0.67	0.59	0.75	0.83	0.96	0.67	0.71	0.79	0.77
DecisionTable	0.84	0.90	0.68	0.78	0.80	0.84	0.91	0.68	0.81	0.81	0.80
top10	0.93	0.95	0.70	0.92	0.87	0.93	0.95	0.70	0.93	0.88	0.87
top25	0.76	0.89	0.67	0.83	0.79	0.76	0.82	0.67	0.82	0.77	0.78
top50	0.83	0.85	0.67	0.59	0.73	0.83	0.96	0.67	0.67	0.78	0.76
PART	0.86	0.93	0.53	0.80	0.78	0.78	0.94	0.51	0.84	0.77	0.77
top10	0.90	0.95	0.70	0.93	0.87	0.91	0.95	0.70	0.95	0.88	0.87
top25	0.84	0.97	0.15	0.88	0.71	0.77	0.91	0.15	0.83	0.67	0.69
top50	0.84	0.88	0.75	0.59	0.77	0.66	0.96	0.67	0.74	0.75	0.76
ZeroR	0.67	0.66	0.67	0.68	0.67	0.67	0.66	0.67	0.68	0.67	0.67
top10	0.67	0.67	0.67	/0	0.67	0.67	0.67	0.67	/0	0.67	0.67
top25	0.67	0.65	/0	0.67	0.67	0.67	0.65	/0	0.67	0.67	0.67
top50	0.67	0.67	/0	0.68	0.67	0.67	0.67	/0	0.68	0.67	0.67
Grand Total	0.85	0.90	0.73	0.81	0.82	0.83	0.91	0.71	0.84	0.83	0.83

## H Prediction - AUC-ROC results for individual leagues

**Table 37.** Prediction - AUC-ROC results for Bundesliga. First columns for filter attributes, last columns for wrapper attributes.

Classifier	Filter					Wrapper					GAV
	DF	FW	GK	MD	AV	DF	FW	GK	MD	AV	
NaiveBayes	0.88	1.00	0.87	0.95	0.92	0.93	1.00	0.93	0.98	0.96	0.94
top10	0.91	1.00	0.86	0.95	0.93	0.99	1.00	0.98	0.98	0.99	0.96
top25	0.86	1.00	0.91	0.95	0.93	0.92	1.00	0.99	0.99	0.98	0.95
top50	0.87	1.00	0.83	0.95	0.91	0.87	1.00	0.81	0.98	0.91	0.91
RandomForest	0.92	1.00	0.79	0.98	0.92	0.93	1.00	0.74	0.96	0.91	0.91
top10	0.98	1.00	0.82	1.00	0.95	1.00	1.00	0.99	0.99	1.00	0.97
top25	0.94	1.00	0.83	0.98	0.94	0.97	1.00	0.88	0.99	0.96	0.95
top50	0.85	1.00	0.71	0.95	0.88	0.84	1.00	0.33	0.91	0.77	0.82
Logistic	0.90	0.98	0.86	0.96	0.92	0.90	0.98	0.76	0.96	0.90	0.91
top10	0.95	0.96	0.87	0.98	0.94	0.97	1.00	0.98	0.98	0.98	0.96
top25	0.88	1.00	0.86	0.97	0.93	0.95	1.00	0.90	1.00	0.96	0.95
top50	0.87	0.97	0.83	0.92	0.90	0.78	0.94	0.39	0.89	0.75	0.82
BayesNet	0.85	1.00	0.72	0.96	0.88	0.93	1.00	0.81	0.98	0.93	0.91
top10	0.95	1.00	0.79	0.98	0.93	1.00	1.00	0.98	0.99	0.99	0.96
top25	0.85	1.00	0.80	0.96	0.90	0.97	1.00	0.86	0.99	0.95	0.93
top50	0.76	1.00	0.57	0.95	0.82	0.82	0.99	0.58	0.96	0.84	0.83
PART	0.81	0.93	0.83	0.91	0.87	0.81	0.93	0.79	0.86	0.85	0.86
top10	0.89	1.00	0.87	0.93	0.92	0.97	1.00	0.87	0.89	0.93	0.93
top25	0.82	0.92	0.78	0.91	0.86	0.68	0.92	0.83	0.87	0.82	0.84
top50	0.71	0.88	0.83	0.89	0.83	0.79	0.88	0.67	0.83	0.79	0.81
J48	0.80	0.93	0.81	0.90	0.86	0.77	0.93	0.81	0.89	0.85	0.86
top10	0.87	1.00	0.87	0.98	0.93	0.85	1.00	0.87	0.89	0.90	0.91
top25	0.80	0.92	0.72	0.87	0.83	0.71	0.92	0.89	0.87	0.85	0.84
top50	0.75	0.88	0.83	0.86	0.83	0.77	0.88	0.67	0.91	0.81	0.82
DecisionTable	0.84	0.92	0.78	0.94	0.87	0.81	0.92	0.69	0.95	0.84	0.85
top10	0.96	0.97	0.83	0.94	0.92	0.92	0.97	0.83	0.93	0.91	0.92
top25	0.85	0.92	0.67	0.93	0.84	0.78	0.92	0.56	0.96	0.80	0.82
top50	0.72	0.88	0.83	0.95	0.84	0.72	0.88	0.67	0.95	0.80	0.82
IBk	0.80	0.93	0.63	0.87	0.81	0.83	0.97	0.72	0.89	0.85	0.83
top10	0.90	1.00	0.78	0.94	0.91	0.95	1.00	0.86	0.94	0.94	0.92
top25	0.81	0.96	0.44	0.87	0.77	0.87	0.96	0.72	0.94	0.87	0.82
top50	0.69	0.83	0.67	0.81	0.75	0.67	0.95	0.58	0.79	0.75	0.75
ZeroR	0.50	0.50	0.50	0.50	0.50	0.50	0.50	0.50	0.50	0.50	0.50
top10	0.50	0.50	0.50	0.50	0.50	0.50	0.50	0.50	0.50	0.50	0.50
top25	0.50	0.50	0.50	0.50	0.50	0.50	0.50	0.50	0.50	0.50	0.50
top50	0.50	0.50	0.50	0.50	0.50	0.50	0.50	0.50	0.50	0.50	0.50
Grand Total	0.81	0.91	0.75	0.89	0.84	0.82	0.91	0.75	0.88	0.84	0.84

**Table 38.** Prediction - AUC-ROC results for EPL. First columns for filter attributes, last columns for wrapper attributes.

Classifier	Filter					Wrapper					GAV
	DF	FW	GK	MD	AV	DF	FW	GK	MD	AV	
RandomForest	0.90	1.00	0.86	0.97	0.93	0.92	0.99	0.84	0.98	0.93	0.93
top10	0.95	1.00	0.98	0.98	0.98	0.99	1.00	0.92	1.00	0.98	0.98
top25	0.93	0.99	0.93	0.97	0.96	0.96	1.00	0.97	0.99	0.98	0.97
top50	0.81	1.00	0.66	0.96	0.86	0.79	0.98	0.63	0.94	0.84	0.85
NaiveBayes	0.90	0.95	0.88	0.96	0.92	0.92	0.98	0.88	0.98	0.94	0.93
top10	0.92	0.99	0.97	0.95	0.96	0.95	1.00	1.00	0.97	0.98	0.97
top25	0.90	0.94	0.94	0.96	0.94	0.93	0.97	0.99	0.98	0.97	0.95
top50	0.86	0.92	0.73	0.98	0.87	0.88	0.98	0.66	0.97	0.87	0.87
Logistic	0.88	0.95	0.86	0.98	0.92	0.87	0.96	0.86	0.96	0.91	0.91
top10	0.91	1.00	0.98	0.98	0.97	0.99	0.97	0.99	0.98	0.98	0.97
top25	0.88	0.90	0.97	0.98	0.93	0.94	1.00	0.99	0.99	0.98	0.95
top50	0.85	0.95	0.63	0.97	0.85	0.67	0.92	0.61	0.92	0.78	0.82
BayesNet	0.88	0.97	0.79	0.96	0.90	0.92	1.00	0.80	0.98	0.92	0.91
top10	0.92	1.00	0.96	0.98	0.96	0.99	1.00	0.99	1.00	0.99	0.98
top25	0.88	0.93	0.90	0.97	0.92	0.96	0.99	0.97	0.99	0.98	0.95
top50	0.82	0.98	0.50	0.94	0.81	0.81	1.00	0.44	0.96	0.80	0.81
DecisionTable	0.83	0.97	0.66	0.94	0.85	0.84	0.97	0.72	0.96	0.87	0.86
top10	0.89	1.00	0.82	0.95	0.92	0.93	1.00	0.82	0.97	0.93	0.92
top25	0.86	0.96	0.67	0.96	0.86	0.83	0.96	0.84	0.98	0.90	0.88
top50	0.75	0.94	0.50	0.92	0.78	0.76	0.94	0.50	0.93	0.78	0.78
J48	0.81	0.98	0.69	0.89	0.85	0.83	0.98	0.76	0.89	0.87	0.86
top10	0.90	1.00	0.93	0.92	0.94	0.85	1.00	0.93	0.91	0.92	0.93
top25	0.91	0.96	0.71	0.88	0.87	0.86	0.96	0.86	0.93	0.90	0.88
top50	0.64	0.98	0.44	0.87	0.73	0.78	0.98	0.50	0.85	0.78	0.76
IBk	0.80	0.93	0.73	0.89	0.84	0.79	0.93	0.79	0.88	0.85	0.84
top10	0.85	1.00	0.86	0.92	0.91	0.95	0.93	0.93	0.93	0.94	0.92
top25	0.80	0.92	0.76	0.86	0.83	0.82	0.92	0.83	0.94	0.88	0.86
top50	0.74	0.88	0.58	0.88	0.77	0.58	0.94	0.59	0.78	0.72	0.75
PART	0.82	0.96	0.68	0.90	0.84	0.79	0.96	0.69	0.90	0.83	0.84
top10	0.90	1.00	0.86	0.94	0.92	0.94	1.00	0.86	0.94	0.93	0.93
top25	0.88	0.96	0.75	0.91	0.87	0.70	0.96	0.71	0.90	0.82	0.85
top50	0.67	0.92	0.44	0.86	0.72	0.74	0.92	0.50	0.84	0.75	0.74
ZeroR	0.50	0.50	0.50	0.50	0.50	0.50	0.50	0.50	0.50	0.50	0.50
top10	0.50	0.50	0.50	0.50	0.50	0.50	0.50	0.50	0.50	0.50	0.50
top25	0.50	0.50	0.50	0.50	0.50	0.50	0.50	0.50	0.50	0.50	0.50
top50	0.50	0.50	0.50	0.50	0.50	0.50	0.50	0.50	0.50	0.50	0.50
Grand Total	0.81	0.91	0.74	0.89	0.84	0.82	0.92	0.76	0.89	0.85	0.84

**Table 39.** Prediction - AUC-ROC results for La Liga. First columns for filter attributes, last columns for wrapper attributes.

Classifier	Filter					Wrapper					GAV
	DF	FW	GK	MD	AV	DF	FW	GK	MD	AV	
BayesNet	0.87	0.93	0.88	0.95	0.91	0.94	0.94	0.88	0.97	0.93	0.92
top10	0.94	0.98	1.00	0.98	0.98	0.99	0.98	0.99	1.00	0.99	0.98
top25	0.88	0.99	0.91	0.96	0.94	0.97	1.00	0.91	0.99	0.97	0.95
top50	0.79	0.80	0.73	0.91	0.81	0.86	0.83	0.73	0.91	0.84	0.82
DecisionTable	0.85	0.89	0.79	0.93	0.86	0.86	0.87	0.81	0.92	0.87	0.87
top10	0.95	0.93	0.96	0.98	0.96	0.93	0.93	0.96	0.96	0.94	0.95
top25	0.85	0.96	0.68	0.97	0.86	0.88	0.96	0.73	0.97	0.88	0.87
top50	0.74	0.78	0.73	0.84	0.77	0.79	0.72	0.73	0.84	0.77	0.77
IBk	0.76	0.86	0.87	0.86	0.84	0.84	0.88	0.79	0.88	0.85	0.84
top10	0.84	0.90	0.96	0.96	0.92	0.90	0.94	0.89	0.98	0.93	0.92
top25	0.68	0.96	0.91	0.87	0.86	0.90	0.93	0.86	0.92	0.90	0.88
top50	0.77	0.72	0.74	0.74	0.74	0.73	0.78	0.61	0.73	0.71	0.73
J48	0.83	0.90	0.73	0.89	0.84	0.81	0.89	0.73	0.86	0.82	0.83
top10	0.91	0.94	0.96	0.95	0.94	0.94	0.93	0.96	0.96	0.95	0.94
top25	0.85	0.93	0.50	0.88	0.79	0.80	0.89	0.50	0.89	0.77	0.78
top50	0.72	0.83	0.73	0.82	0.78	0.68	0.83	0.73	0.74	0.75	0.76
Logistic	0.90	0.90	0.91	0.97	0.92	0.94	0.93	0.93	0.97	0.94	0.93
top10	0.93	0.90	0.99	0.99	0.96	0.99	0.93	0.98	0.99	0.98	0.97
top25	0.89	0.99	0.96	0.98	0.95	0.93	1.00	0.95	0.98	0.97	0.96
top50	0.87	0.81	0.79	0.94	0.85	0.89	0.85	0.86	0.95	0.89	0.87
NaiveBayes	0.87	0.92	0.87	0.95	0.90	0.95	0.93	0.88	0.96	0.93	0.92
top10	0.91	0.98	0.99	0.95	0.96	0.99	0.99	0.99	0.95	0.98	0.97
top25	0.88	0.97	0.95	0.95	0.94	0.97	0.99	0.93	0.97	0.96	0.95
top50	0.83	0.82	0.68	0.93	0.82	0.89	0.80	0.71	0.95	0.84	0.83
PART	0.85	0.90	0.73	0.89	0.84	0.83	0.89	0.73	0.87	0.83	0.84
top10	0.91	0.94	0.96	0.95	0.94	0.96	0.93	0.96	0.97	0.96	0.95
top25	0.87	0.93	0.50	0.89	0.80	0.80	0.89	0.50	0.93	0.78	0.79
top50	0.77	0.83	0.73	0.84	0.79	0.74	0.83	0.73	0.71	0.75	0.77
RandomForest	0.90	0.93	0.88	0.96	0.92	0.96	0.95	0.89	0.95	0.94	0.93
top10	0.98	0.98	1.00	0.99	0.99	0.99	0.99	0.99	1.00	0.99	0.99
top25	0.92	0.99	0.91	0.98	0.95	0.99	1.00	0.92	0.99	0.97	0.96
top50	0.81	0.81	0.73	0.90	0.81	0.89	0.85	0.77	0.87	0.85	0.83
ZeroR	0.50	0.50	0.50	0.50	0.50	0.50	0.50	0.50	0.50	0.50	0.50
top10	0.50	0.50	0.50	0.50	0.50	0.50	0.50	0.50	0.50	0.50	0.50
top25	0.50	0.50	0.50	0.50	0.50	0.50	0.50	0.50	0.50	0.50	0.50
top50	0.50	0.50	0.50	0.50	0.50	0.50	0.50	0.50	0.50	0.50	0.50
Grand Total	0.81	0.86	0.80	0.88	0.84	0.85	0.86	0.79	0.88	0.84	0.84

**Table 40.** Prediction - AUC-ROC results for Ligue 1. First columns for filter attributes, last columns for wrapper attributes.

Classifier	Filter					Wrapper					GAV
	DF	FW	GK	MD	AV	DF	FW	GK	MD	AV	
Logistic	0.96	0.94	0.81	0.94	0.91	0.93	0.93	0.75	0.98	0.90	0.90
top10	0.97	0.94	0.92	0.95	0.95	0.96	1.00	0.93	0.99	0.97	0.96
top25	0.95	0.98	0.98	0.93	0.96	0.91	0.99	0.81	0.97	0.92	0.94
top50	0.96	0.91	0.54	0.93	0.83	0.91	0.79	0.51	0.98	0.80	0.82
NaiveBayes	0.94	0.92	0.83	0.90	0.90	0.94	0.93	0.77	0.95	0.89	0.90
top10	0.97	0.99	0.93	0.88	0.94	0.99	1.00	0.96	0.93	0.97	0.96
top25	0.90	0.93	0.98	0.89	0.93	0.90	0.93	0.83	0.95	0.90	0.91
top50	0.94	0.84	0.57	0.92	0.82	0.92	0.86	0.50	0.96	0.81	0.82
BayesNet	0.93	0.93	0.82	0.91	0.89	0.95	0.93	0.71	0.96	0.89	0.89
top10	0.97	0.99	0.93	0.91	0.95	0.99	1.00	0.95	0.97	0.98	0.96
top25	0.91	0.93	0.94	0.90	0.92	0.93	0.99	0.81	0.96	0.92	0.92
top50	0.89	0.86	0.57	0.92	0.81	0.92	0.80	0.37	0.93	0.75	0.78
RandomForest	0.92	0.94	0.82	0.94	0.91	0.95	0.91	0.66	0.95	0.87	0.89
top10	0.98	0.98	0.93	0.97	0.97	1.00	1.00	0.94	0.99	0.98	0.97
top25	0.92	0.98	0.97	0.93	0.95	0.95	0.98	0.78	0.96	0.92	0.93
top50	0.86	0.85	0.57	0.92	0.80	0.90	0.76	0.25	0.91	0.71	0.75
DecisionTable	0.84	0.87	0.72	0.89	0.83	0.87	0.88	0.64	0.91	0.83	0.83
top10	0.90	0.96	0.88	0.90	0.91	0.90	0.94	0.88	0.94	0.92	0.91
top25	0.79	0.90	0.73	0.90	0.83	0.86	0.89	0.50	0.90	0.79	0.81
top50	0.83	0.76	0.57	0.87	0.76	0.86	0.80	0.55	0.88	0.78	0.77
IBk	0.84	0.86	0.72	0.88	0.82	0.88	0.89	0.63	0.86	0.81	0.82
top10	0.95	0.87	0.77	0.91	0.87	0.94	0.98	0.88	0.93	0.93	0.90
top25	0.85	0.91	0.93	0.88	0.89	0.87	0.92	0.64	0.90	0.83	0.86
top50	0.73	0.80	0.46	0.84	0.71	0.82	0.77	0.38	0.73	0.68	0.69
PART	0.87	0.85	0.70	0.85	0.82	0.76	0.89	0.73	0.82	0.80	0.81
top10	0.93	0.87	0.84	0.91	0.89	0.94	1.00	0.92	0.89	0.94	0.91
top25	0.87	0.97	0.73	0.85	0.85	0.66	0.88	0.77	0.78	0.77	0.81
top50	0.80	0.71	0.53	0.79	0.71	0.67	0.80	0.50	0.81	0.70	0.70
J48	0.87	0.85	0.67	0.83	0.81	0.76	0.89	0.76	0.82	0.81	0.81
top10	0.97	0.87	0.84	0.89	0.89	0.94	1.00	0.90	0.85	0.92	0.91
top25	0.83	0.97	0.73	0.86	0.84	0.66	0.88	0.86	0.84	0.81	0.83
top50	0.81	0.71	0.46	0.75	0.68	0.69	0.80	0.50	0.77	0.69	0.69
ZeroR	0.50	0.50	0.50	0.50	0.50	0.50	0.50	0.50	0.50	0.50	0.50
top10	0.50	0.50	0.50	0.50	0.50	0.50	0.50	0.50	0.50	0.50	0.50
top25	0.50	0.50	0.50	0.50	0.50	0.50	0.50	0.50	0.50	0.50	0.50
top50	0.50	0.50	0.50	0.50	0.50	0.50	0.50	0.50	0.50	0.50	0.50
Grand Total	0.85	0.85	0.73	0.85	0.82	0.84	0.86	0.68	0.86	0.81	0.82

**Table 41.** Prediction - AUC-ROC results for Serie A. First columns for filter attributes, last columns for wrapper attributes.

Classifier	Filter					Wrapper					GAV
	DF	FW	GK	MD	AV	DF	FW	GK	MD	AV	
NaiveBayes	0.95	1.00	0.86	0.93	0.94	0.97	1.00	0.83	0.96	0.94	0.94
top10	0.96	1.00	0.98	0.98	0.98	0.99	1.00	0.95	0.98	0.98	0.98
top25	0.93	1.00	0.85	0.99	0.94	0.96	1.00	0.80	0.98	0.94	0.94
top50	0.96	1.00	0.76	0.83	0.89	0.97	1.00	0.74	0.91	0.90	0.90
RandomForest	0.96	1.00	0.85	0.91	0.93	0.92	1.00	0.86	0.94	0.93	0.93
top10	0.99	1.00	1.00	0.99	1.00	0.97	1.00	0.96	0.99	0.98	0.99
top25	0.95	1.00	0.82	0.98	0.94	0.93	1.00	0.95	0.96	0.96	0.95
top50	0.92	0.99	0.74	0.75	0.85	0.85	1.00	0.68	0.86	0.85	0.85
BayesNet	0.94	0.99	0.82	0.89	0.91	0.95	1.00	0.82	0.94	0.93	0.92
top10	0.98	1.00	0.98	0.99	0.99	0.98	1.00	0.98	0.99	0.99	0.99
top25	0.93	0.98	0.79	0.99	0.92	0.95	1.00	0.79	0.97	0.93	0.92
top50	0.91	1.00	0.68	0.70	0.82	0.91	1.00	0.68	0.85	0.86	0.84
Logistic	0.97	0.90	0.87	0.85	0.90	0.91	0.99	0.86	0.89	0.91	0.91
top10	0.98	1.00	1.00	0.96	0.98	0.97	1.00	0.97	0.98	0.98	0.98
top25	0.95	0.98	0.83	0.98	0.93	0.96	1.00	0.86	0.99	0.95	0.94
top50	0.98	0.74	0.80	0.62	0.79	0.80	0.98	0.74	0.69	0.80	0.79
IBk	0.90	0.91	0.86	0.81	0.87	0.82	0.90	0.76	0.86	0.84	0.85
top10	0.92	0.98	1.00	0.92	0.95	0.92	1.00	0.90	0.92	0.93	0.94
top25	0.88	0.97	0.88	0.92	0.92	0.86	0.92	0.70	0.94	0.85	0.88
top50	0.91	0.79	0.68	0.60	0.75	0.70	0.79	0.68	0.72	0.72	0.73
J48	0.88	0.93	0.76	0.80	0.84	0.86	0.94	0.76	0.82	0.85	0.84
top10	0.91	0.95	0.77	0.93	0.89	0.96	0.95	0.77	0.95	0.91	0.90
top25	0.91	0.94	0.79	0.91	0.89	0.75	0.92	0.79	0.81	0.82	0.85
top50	0.83	0.89	0.72	0.56	0.75	0.88	0.95	0.72	0.72	0.81	0.78
DecisionTable	0.90	0.89	0.71	0.80	0.83	0.90	0.92	0.71	0.86	0.85	0.84
top10	0.94	0.95	0.77	0.96	0.90	0.94	0.94	0.77	0.97	0.90	0.90
top25	0.86	0.87	0.65	0.92	0.83	0.86	0.83	0.65	0.86	0.80	0.81
top50	0.90	0.84	0.72	0.53	0.75	0.90	0.99	0.72	0.76	0.84	0.79
PART	0.86	0.93	0.68	0.79	0.81	0.84	0.94	0.66	0.83	0.82	0.82
top10	0.90	0.95	0.77	0.93	0.89	0.96	0.95	0.77	0.95	0.91	0.90
top25	0.85	0.97	0.54	0.87	0.81	0.73	0.92	0.54	0.81	0.75	0.78
top50	0.83	0.88	0.72	0.55	0.75	0.82	0.96	0.67	0.74	0.80	0.77
ZeroR	0.50	0.50	0.50	0.50	0.50	0.50	0.50	0.50	0.50	0.50	0.50
top10	0.50	0.50	0.50	0.50	0.50	0.50	0.50	0.50	0.50	0.50	0.50
top25	0.50	0.50	0.50	0.50	0.50	0.50	0.50	0.50	0.50	0.50	0.50
top50	0.50	0.50	0.50	0.50	0.50	0.50	0.50	0.50	0.50	0.50	0.50
Grand Total	0.87	0.90	0.77	0.81	0.84	0.85	0.91	0.75	0.84	0.84	0.84