

Chapter 1

Introduction

A note on the use of these PowerPoint slides:

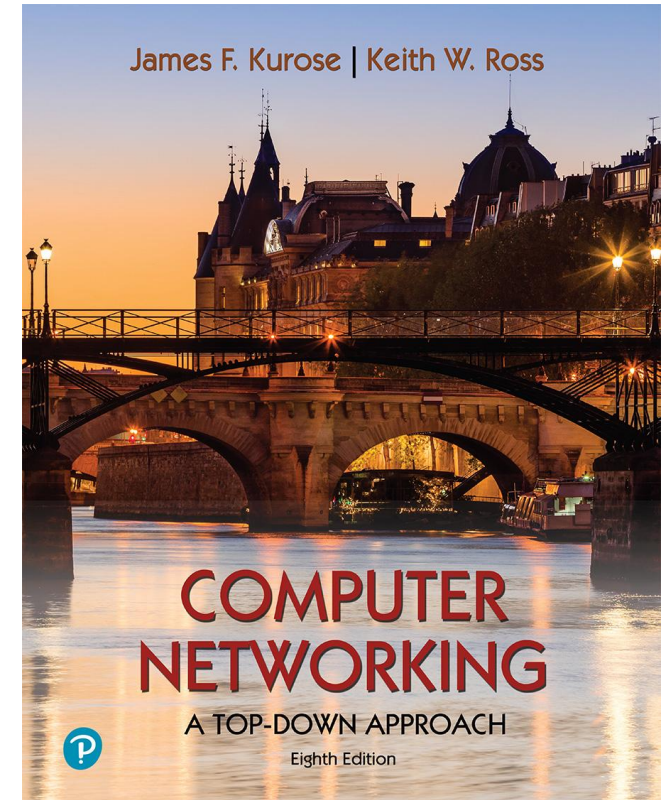
We're making these slides freely available to all (faculty, students, readers). They're in PowerPoint form so you see the animations; and can add, modify, and delete slides (including this one) and slide content to suit your needs. They obviously represent a *lot* of work on our part. In return for use, we only ask the following:

- If you use these slides (e.g., in a class) that you mention their source (after all, we'd like people to use our book!)
- If you post any slides on a www site, that you note that they are adapted from (or perhaps identical to) our slides, and note our copyright of this material.

For a revision history, see the slide note for this page.

Thanks and enjoy! JFK/KWR

All material copyright 1996-2020
J.F Kurose and K.W. Ross, All Rights Reserved



Computer Networking: A Top-Down Approach

8th edition

Jim Kurose, Keith Ross
Pearson, 2020

Chapter 1: introduction

Chapter goal:

- Get “feel,” “big picture,” introduction to terminology
 - more depth, detail *later* in course



Overview/roadmap:

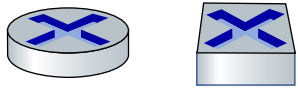
- What *is* the Internet? What *is* a protocol?
- **Network edge:** hosts, access network, physical media
- **Network core:** packet/circuit switching, internet structure
- **Performance:** loss, delay, throughput
- Protocol layers, service models
- Security
- History

The Internet: a “nuts and bolts” view



Billions of connected computing *devices*:

- *hosts* = end systems
- running *network apps* at Internet's “edge”



Packet switches: forward packets (chunks of data)

- *routers, switches*

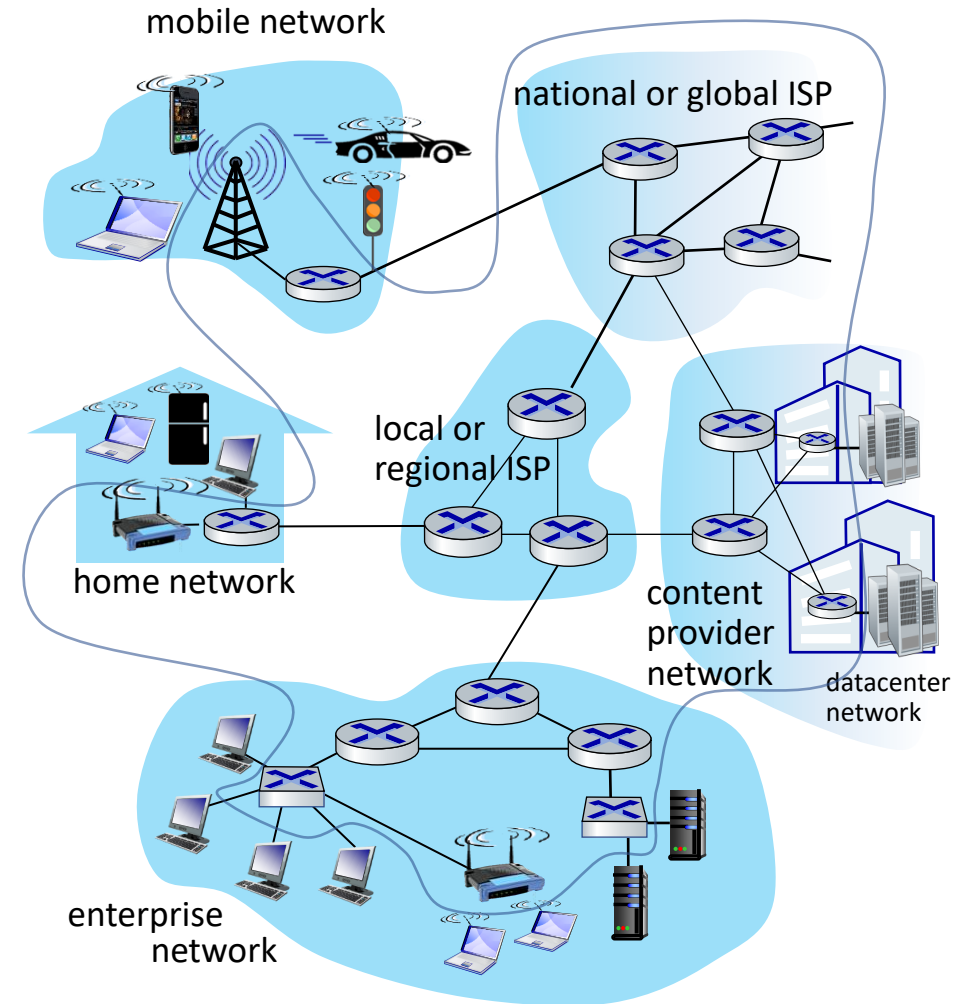
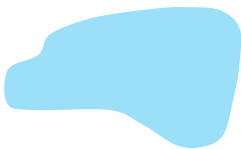
Communication links

- fiber, copper, radio, satellite
- transmission rate: *bandwidth*



Networks

- collection of devices, routers, links: managed by an organization



“Fun” Internet-connected devices



Amazon Echo



Internet refrigerator



IP picture frame



Pacemaker & Monitor



Tweet-a-watt:
monitor energy use



Security Camera



Slingbox: remote control cable TV



Web-enabled toaster +
weather forecaster



AR devices



cars



bikes



scooters



Internet phones



Gaming devices



sensorized,
bed
mattress

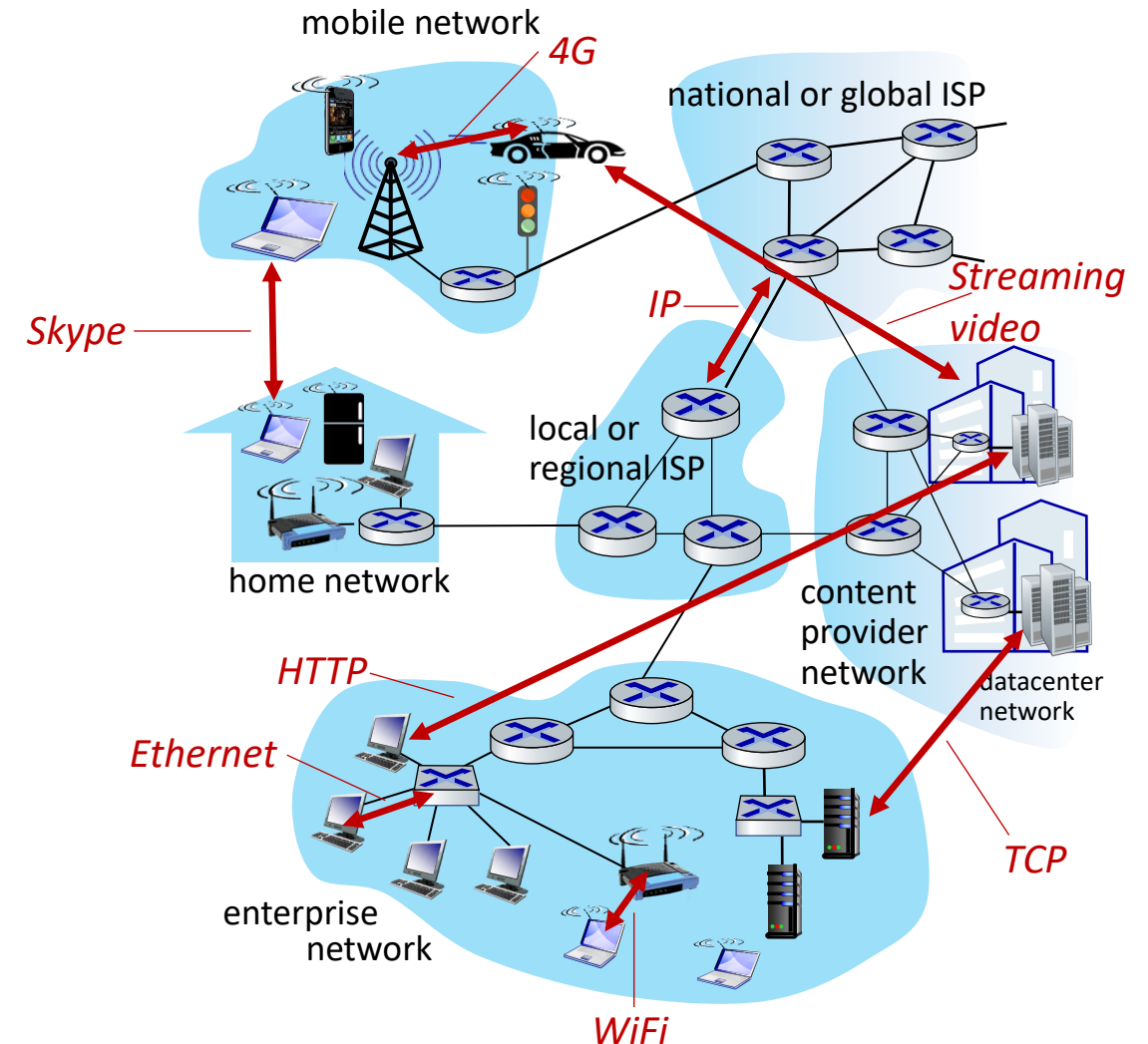


Fitbit

Others?

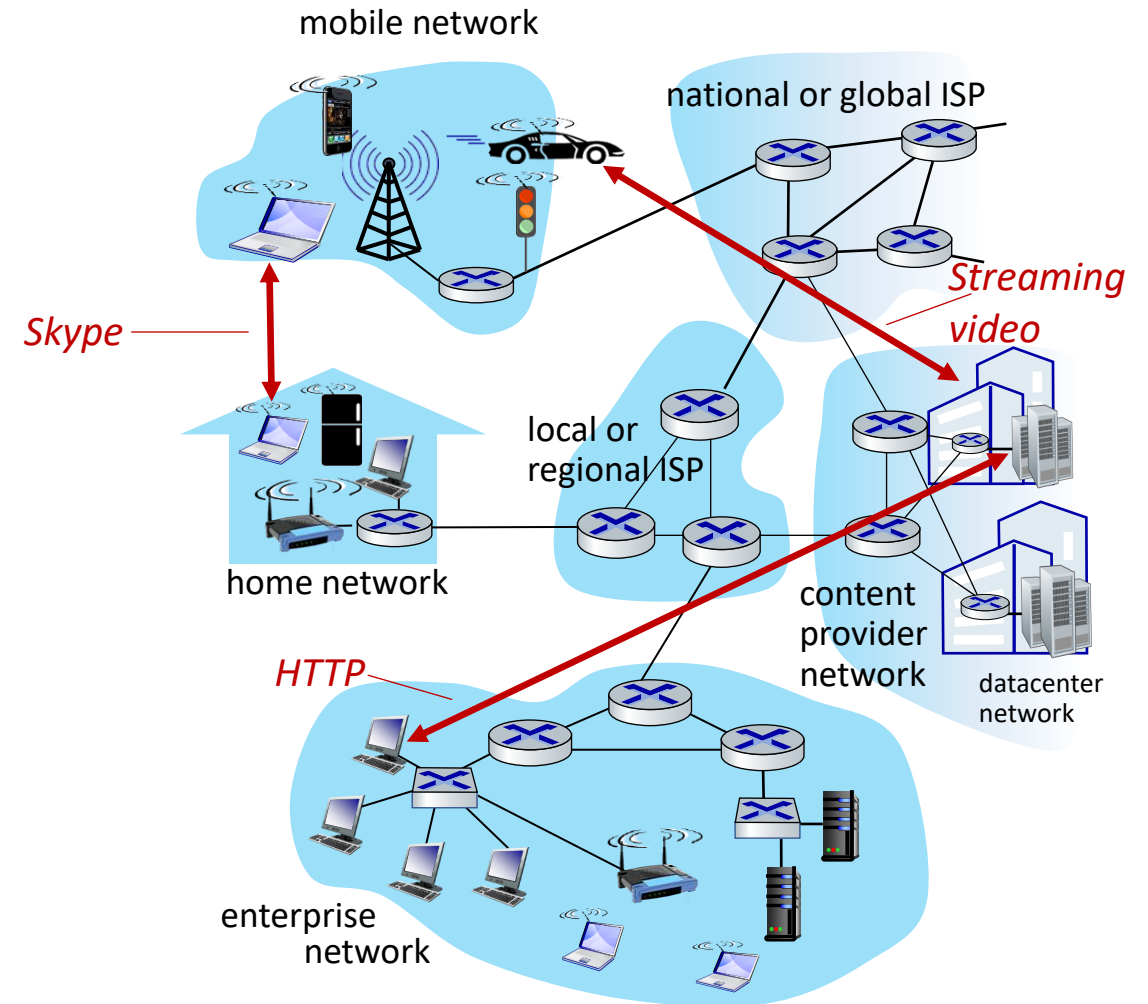
The Internet: a “nuts and bolts” view

- *Internet: “network of networks”*
 - Interconnected ISPs
- *protocols* are everywhere
 - control sending, receiving of messages
 - e.g., HTTP (Web), streaming video, Skype, TCP, IP, WiFi, 4G, Ethernet
- *Internet standards*
 - RFC: Request for Comments
 - IETF: Internet Engineering Task Force



The Internet: a “services” view

- *Infrastructure* that provides services to applications:
 - Web, streaming video, multimedia teleconferencing, email, games, e-commerce, social media, inter-connected appliances, ...
- provides *programming interface* to distributed applications:
 - “hooks” allowing sending/receiving apps to “connect” to, use Internet transport service
 - provides service options, analogous to postal service



What's a protocol?

Human protocols:

- “what’s the time?”
- “I have a question”
- introductions

Rules for:

- ... specific messages sent
- ... specific actions taken
when message received,
or other events

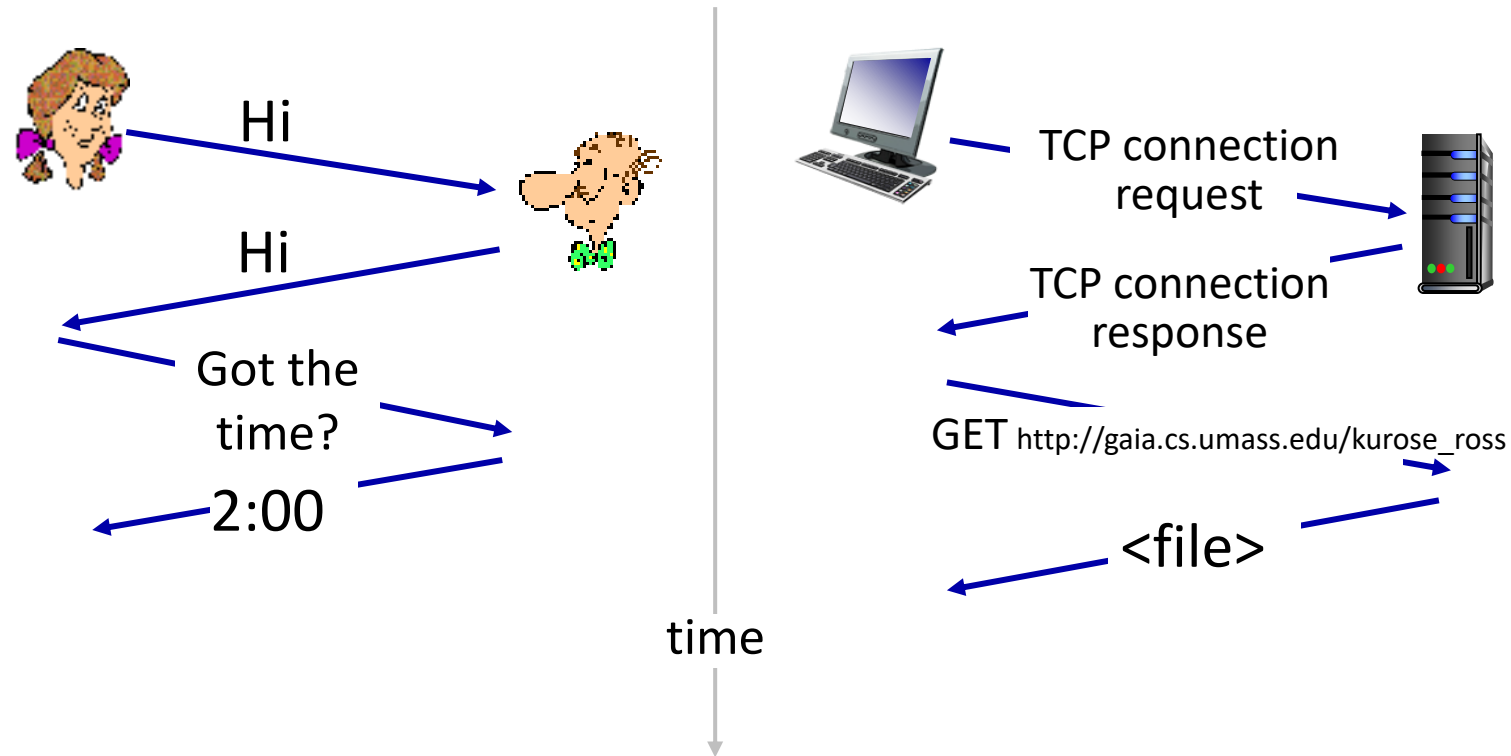
Network protocols:

- computers (devices) rather than humans
- all communication activity in Internet
governed by protocols

*Protocols define the **format, order** of
messages sent and received among
network entities, and **actions taken**
on message transmission, receipt*

What's a protocol?

A human protocol and a computer network protocol:



Q: other human protocols?

Chapter 1: roadmap

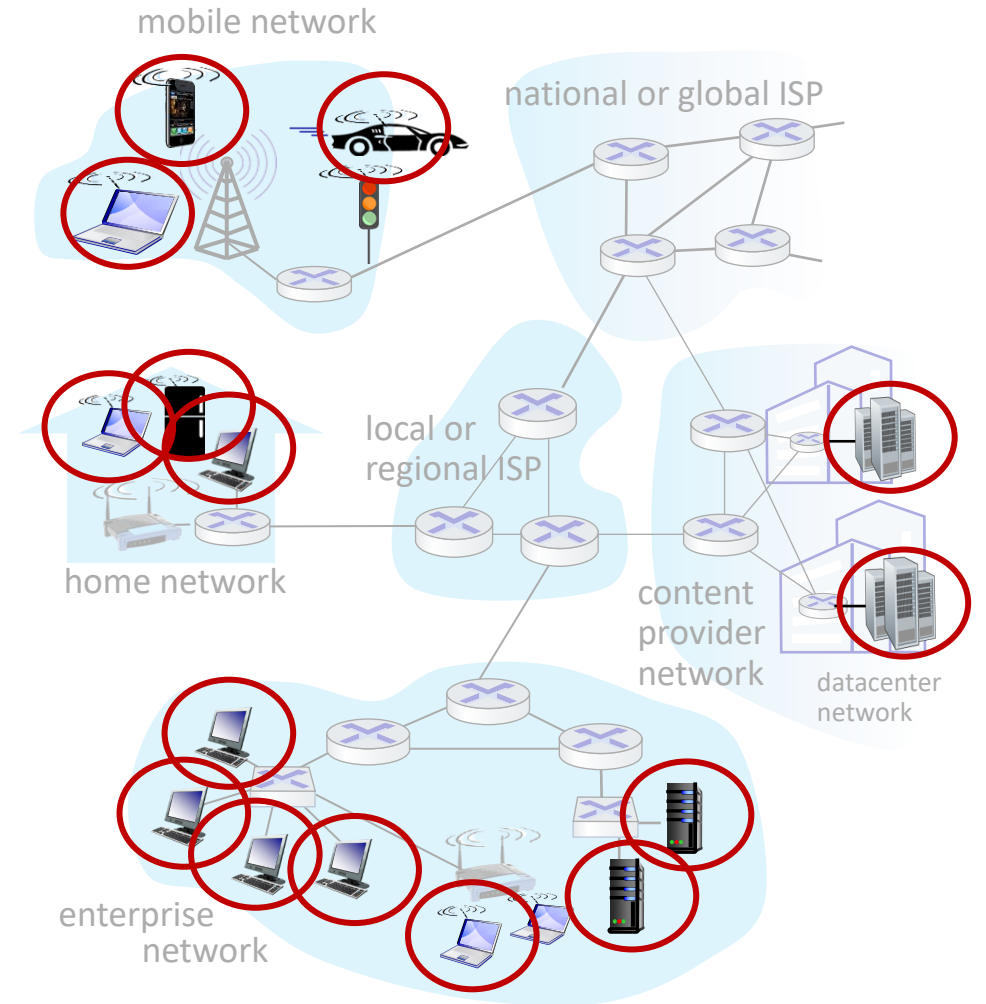
- What *is* the Internet?
- What *is* a protocol?
- **Network edge:** hosts, access network, physical media
- Network core: packet/circuit switching, internet structure
- Performance: loss, delay, throughput
- Security
- Protocol layers, service models
- History



A closer look at Internet structure

Network edge:

- hosts: clients and servers
- servers often in data centers



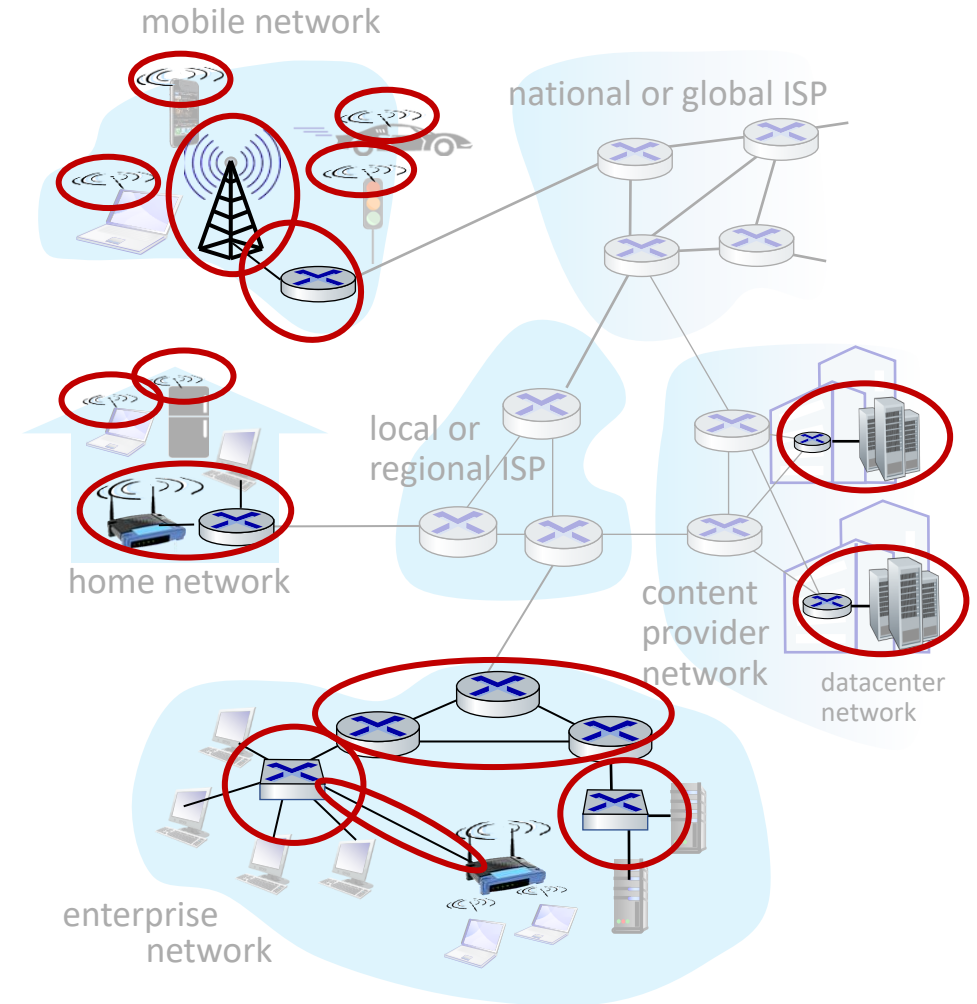
A closer look at Internet structure

Network edge:

- hosts: clients and servers
- servers often in data centers

Access networks, physical media:

- wired, wireless communication links



A closer look at Internet structure

Network edge:

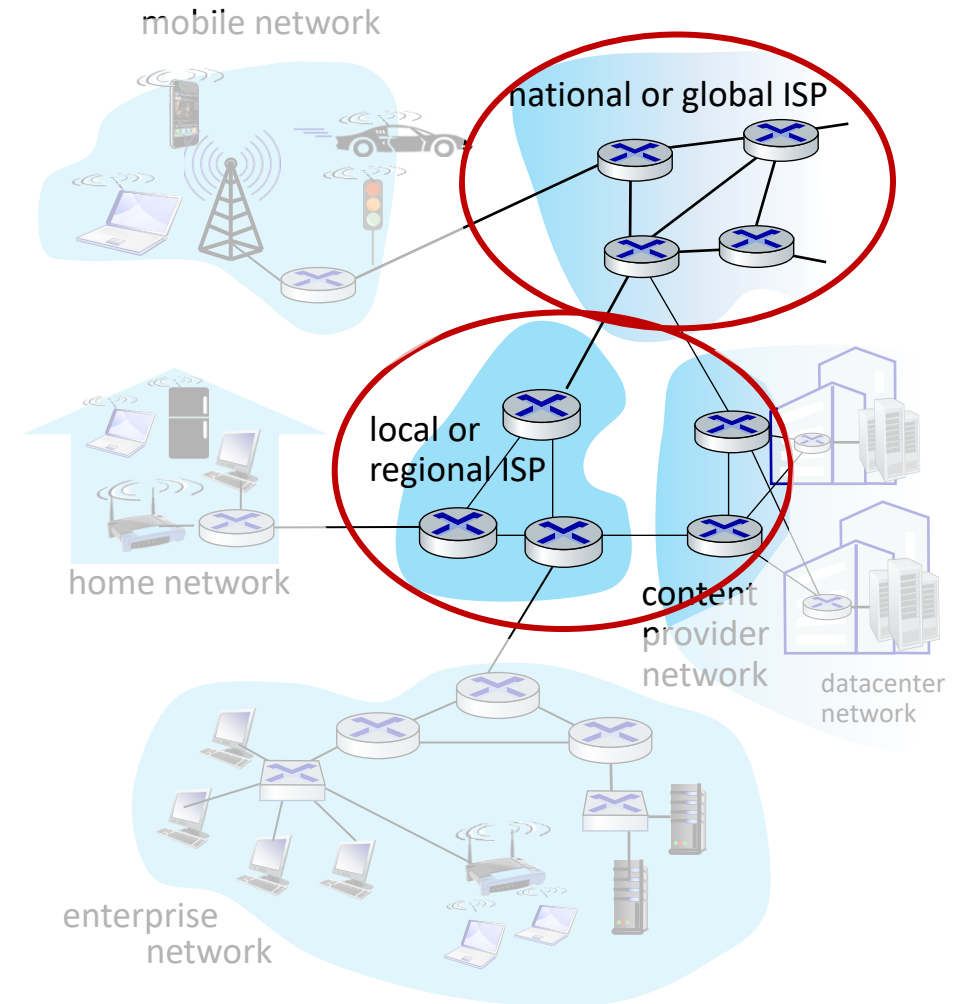
- hosts: clients and servers
- servers often in data centers

Access networks, physical media:

- wired, wireless communication links

Network core:

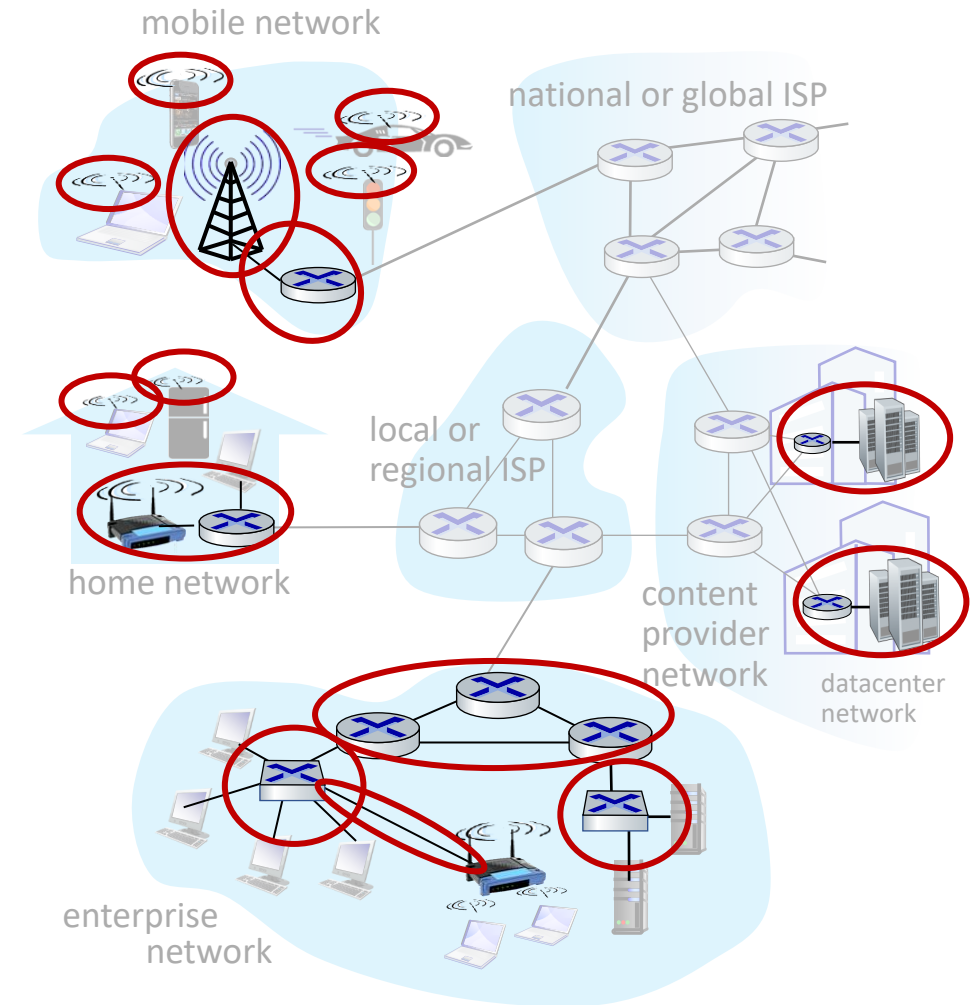
- interconnected routers
- network of networks



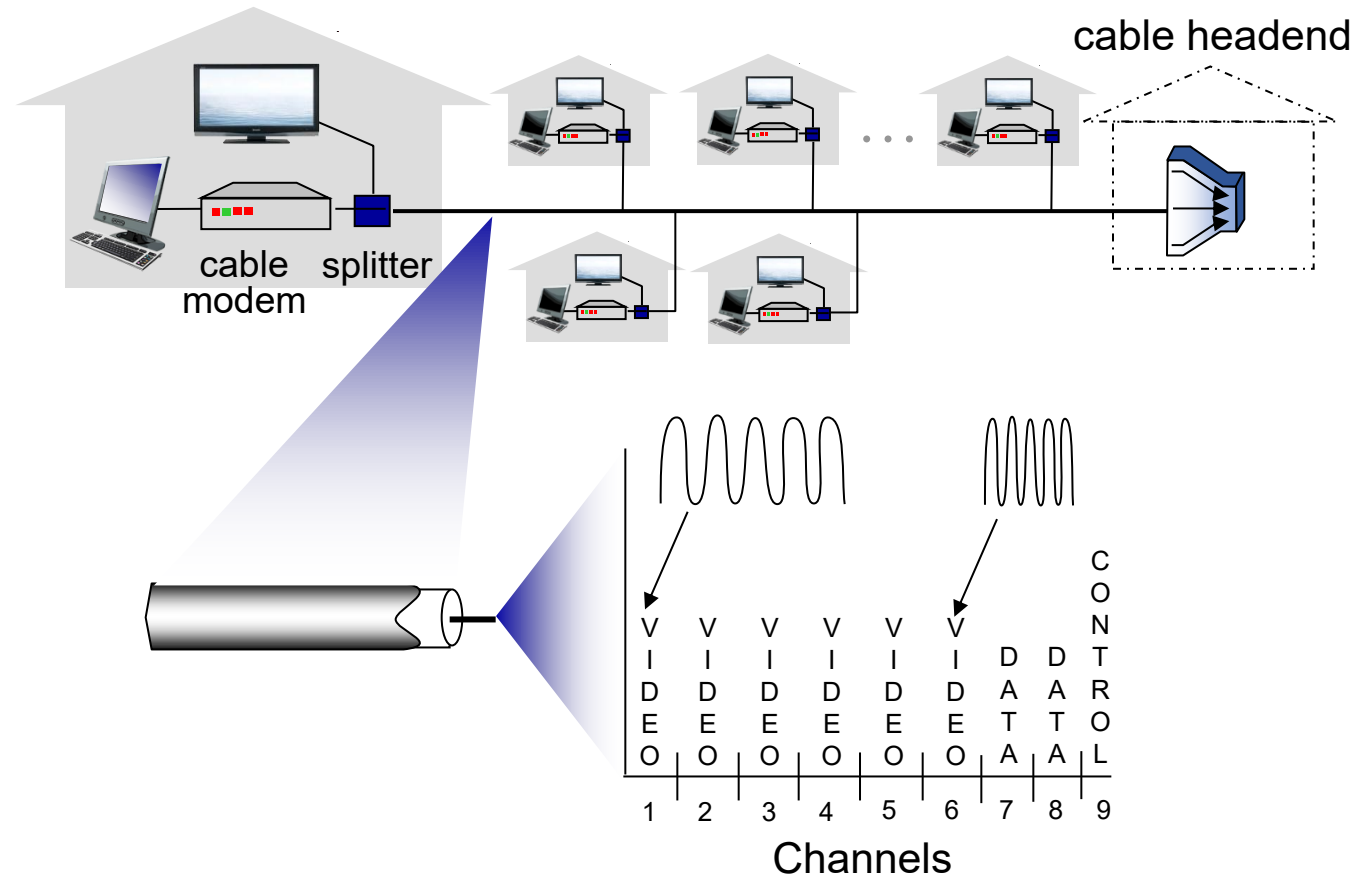
Access networks and physical media

Q: How to connect end systems to edge router?

- residential access nets
- institutional access networks (school, company)
- mobile access networks (WiFi, 4G/5G)

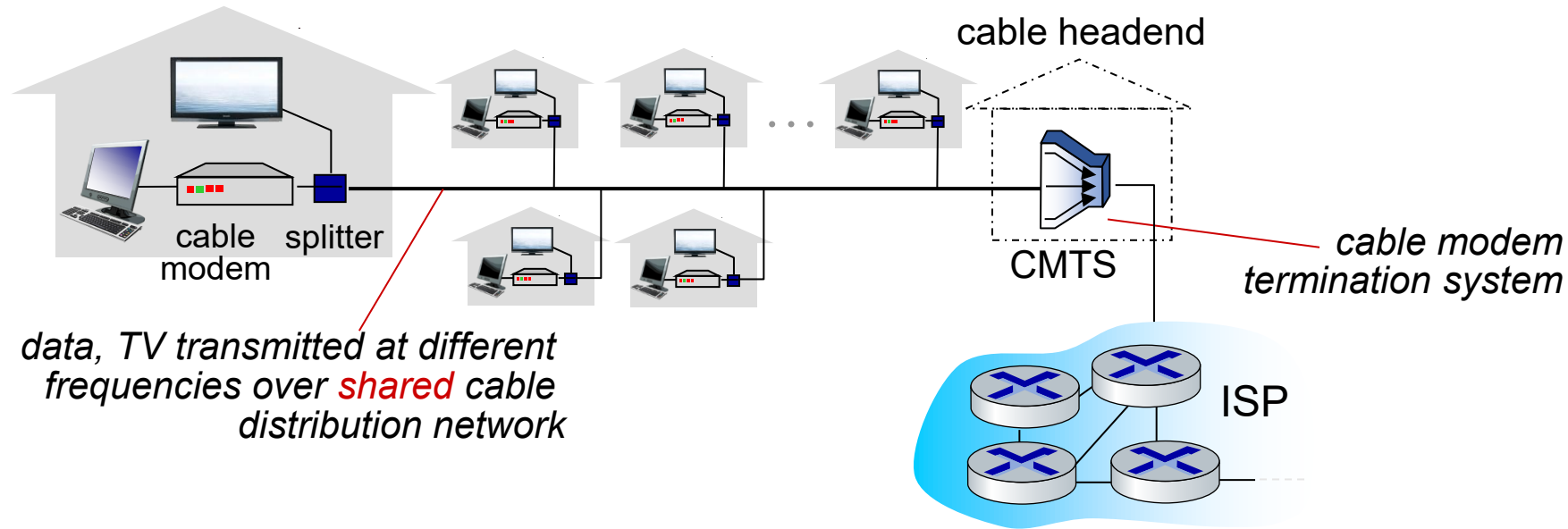


Access networks: cable-based access



frequency division multiplexing (FDM): different channels transmitted in different frequency bands

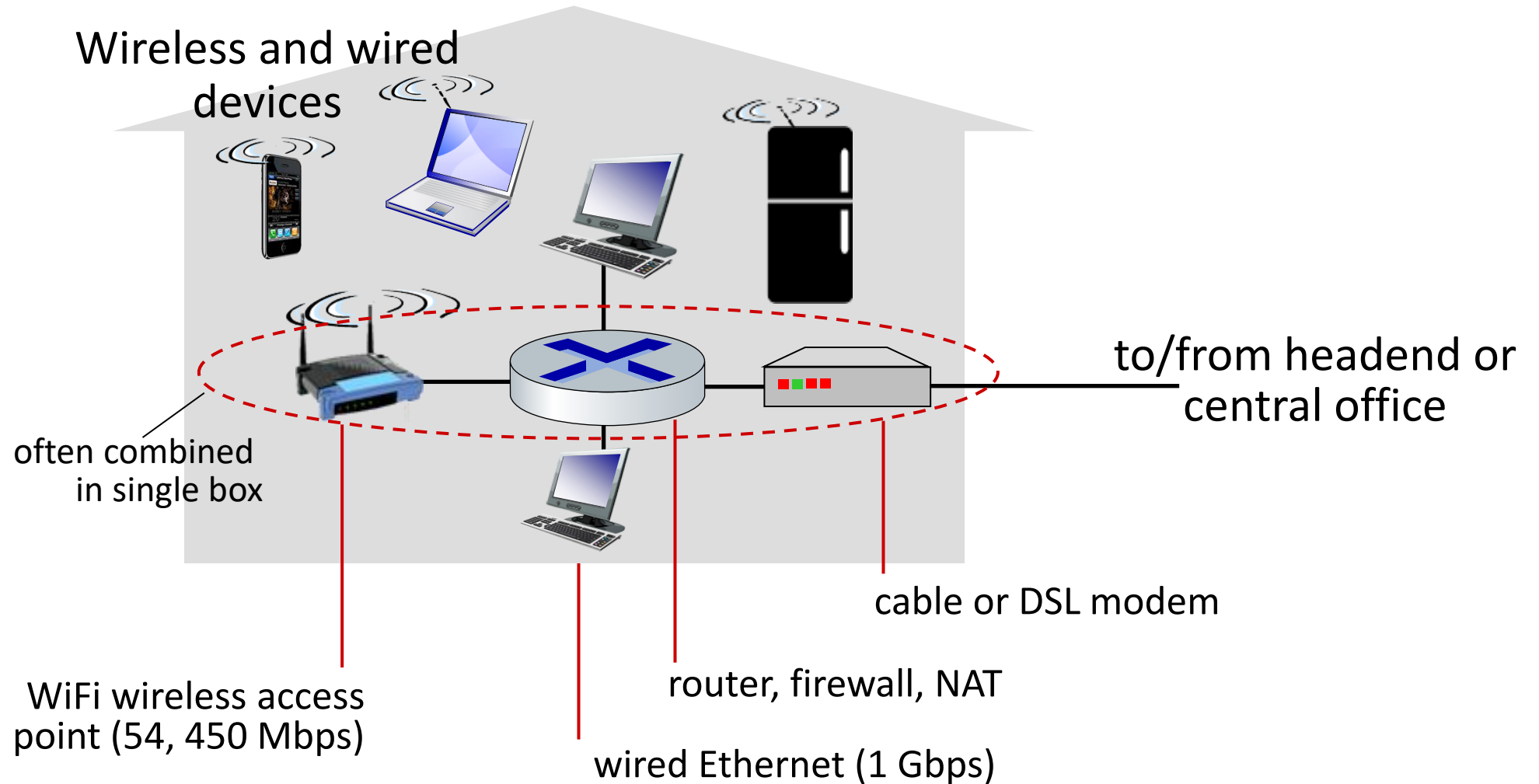
Access networks: cable-based access



■ HFC: hybrid fiber coax

- asymmetric: up to 40 Mbps – 1.2 Gbps downstream transmission rate, 30-100 Mbps upstream transmission rate
- **network** of cable, fiber attaches homes to ISP router
 - homes *share access network* to cable headend

Access networks: home networks



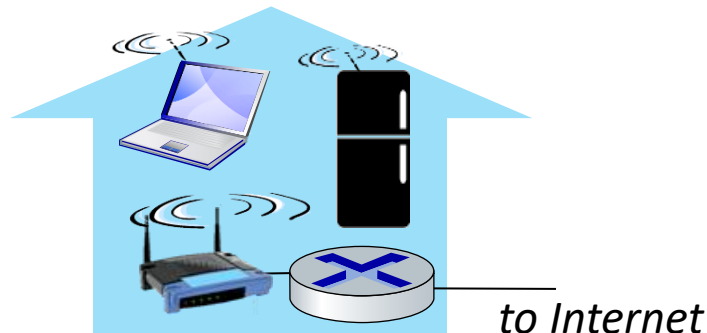
Wireless access networks

Shared *wireless* access network connects end system to router

- via base station aka “access point”

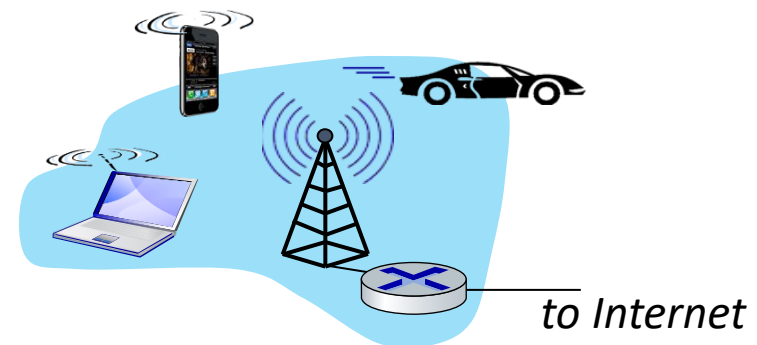
Wireless local area networks (WLANs)

- typically within or around building (~100 ft)
- 802.11b/g/n (WiFi): 11, 54, 450 Mbps transmission rate

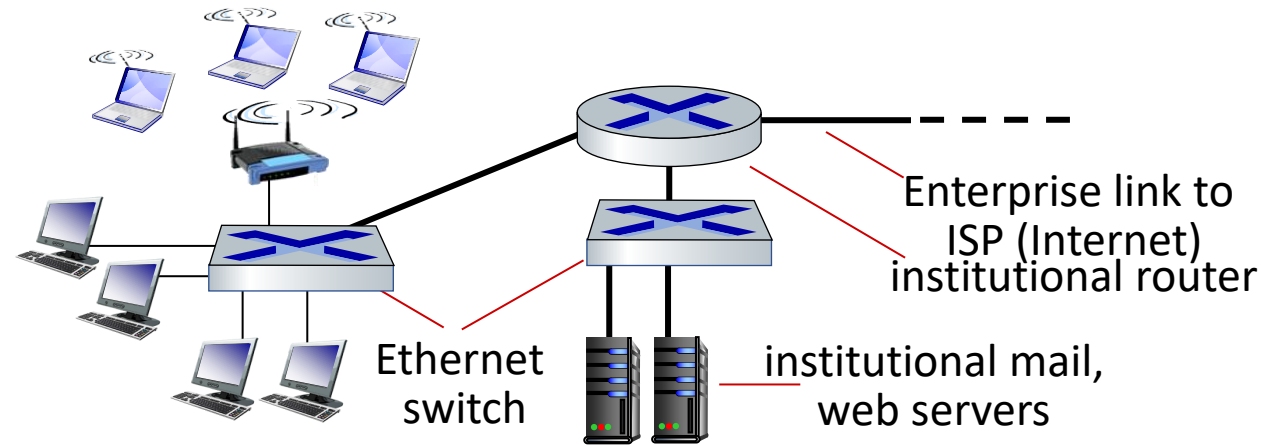


Wide-area cellular access networks

- provided by mobile, cellular network operator (10's km)
- 10's Mbps
- 4G cellular networks (5G coming)



Access networks: enterprise networks



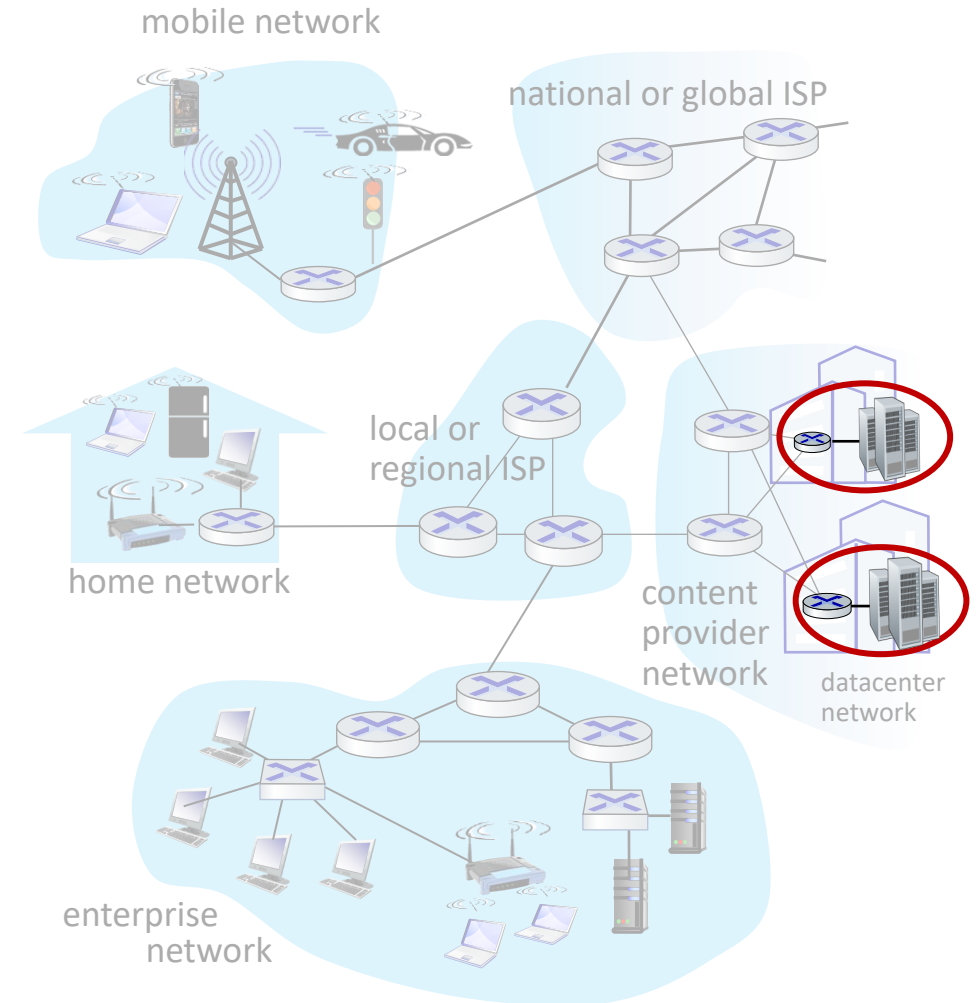
- companies, universities, etc.
- mix of wired, wireless link technologies, connecting a mix of switches and routers (we'll cover differences shortly)
 - Ethernet: wired access at 100Mbps, 1Gbps, 10Gbps
 - WiFi: wireless access points at 11, 54, 450 Mbps

Access networks: data center networks

- high-bandwidth links (10s to 100s Gbps) connect hundreds to thousands of servers together, and to Internet



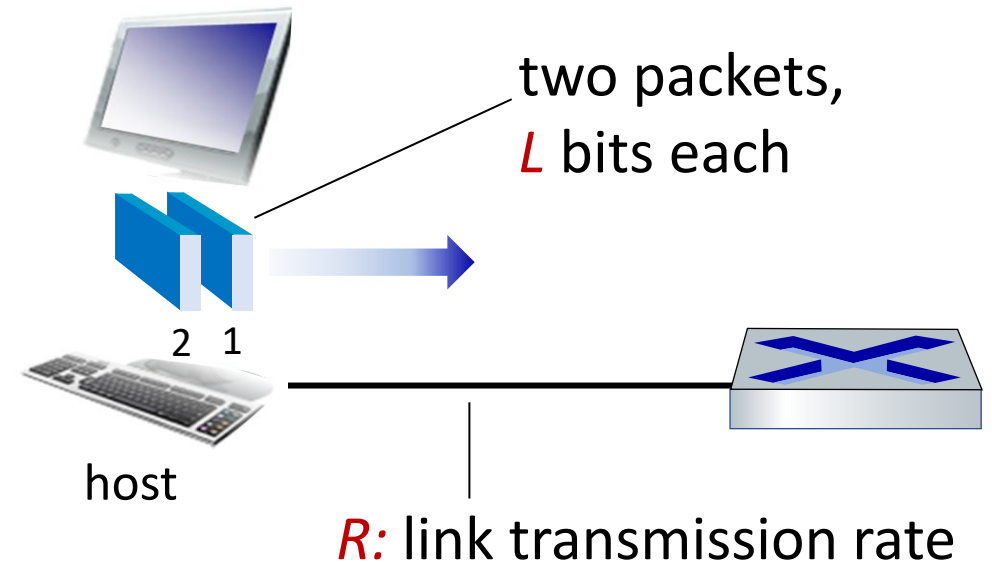
Courtesy: Massachusetts Green High Performance Computing Center (mghpcc.org)



Host: sends *packets* of data

host sending function:

- takes application message
- breaks into smaller chunks, known as *packets*, of length L bits
- transmits packet into access network at *transmission rate* R
 - link transmission rate, aka link *capacity, aka link bandwidth*

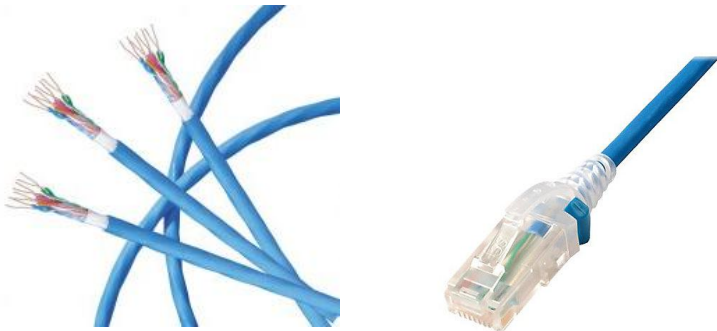


$$\begin{array}{l} \text{packet} \\ \text{transmission} \\ \text{delay} \end{array} = \begin{array}{l} \text{time needed to} \\ \text{transmit } L\text{-bit} \\ \text{packet into link} \end{array} = \frac{L \text{ (bits)}}{R \text{ (bits/sec)}}$$

Links: physical media

Twisted pair (TP)

- two insulated copper wires
 - Category 5: 100 Mbps, 1 Gbps Ethernet
 - Category 6: 10Gbps Ethernet



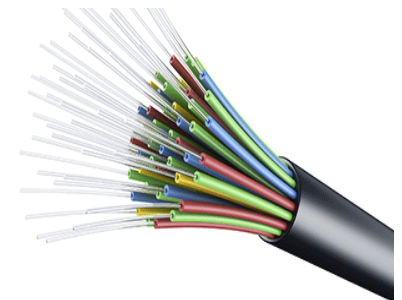
Coaxial cable:

- two concentric copper conductors
- bidirectional
- broadband:
 - multiple frequency channels on cable
 - 100's Mbps per channel



Fiber optic cable:

- glass fiber carrying light pulses, each pulse a bit
 - high-speed point-to-point transmission (10's-100's Gbps)
- low error rate: repeaters spaced far apart + immune to electromagnetic noise



Links: physical media

Radio link types:

- Wireless LAN (WiFi)
 - 10-100's Mbps; 10's of meters
- wide-area (e.g., 4G/5G cellular)
 - 10's Mbps over ~10 Km
- Bluetooth: cable replacement
 - short distances, limited rates
- terrestrial microwave
 - point-to-point; 45 Mbps channels
- satellite
 - up to 45 Mbps per channel
 - 270 msec end-end delay

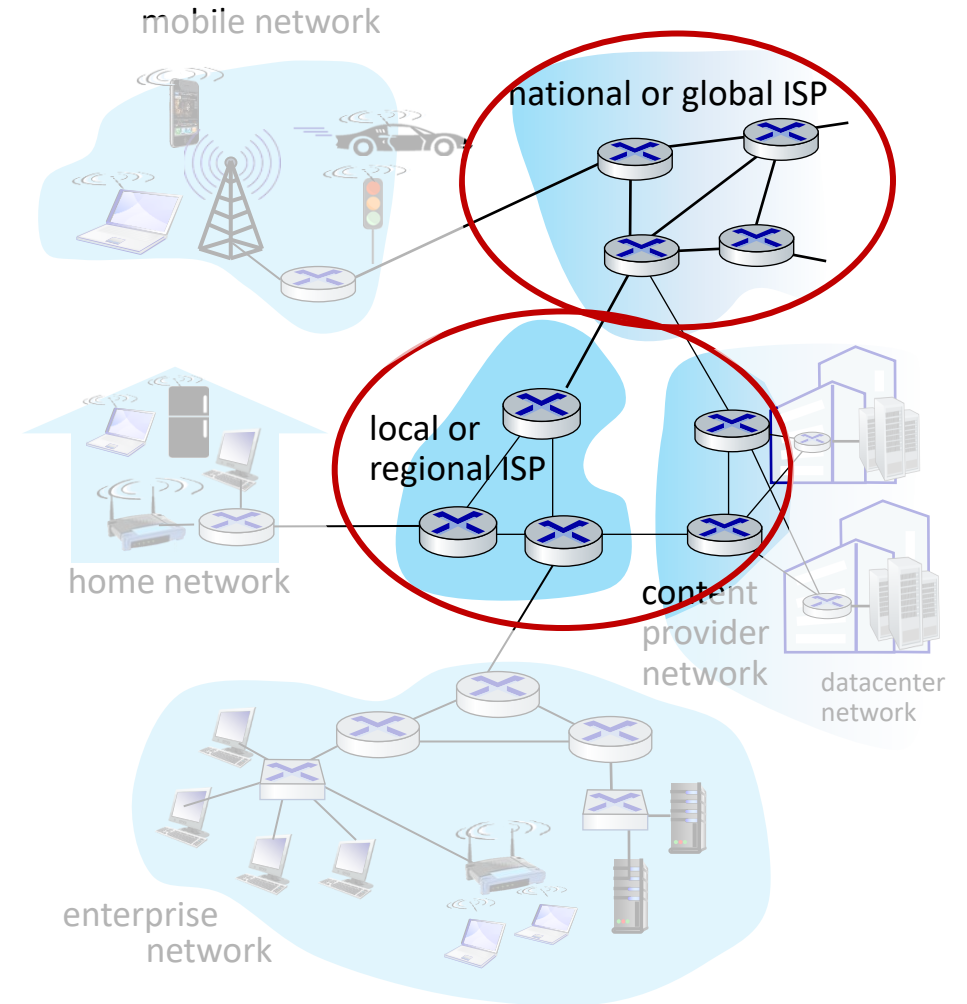
Chapter 1: roadmap

- What *is* the Internet?
- What *is* a protocol?
- Network edge: hosts, access network, physical media
- **Network core:** packet/circuit switching, internet structure
- Performance: loss, delay, throughput
- Security
- Protocol layers, service models
- History



The network core

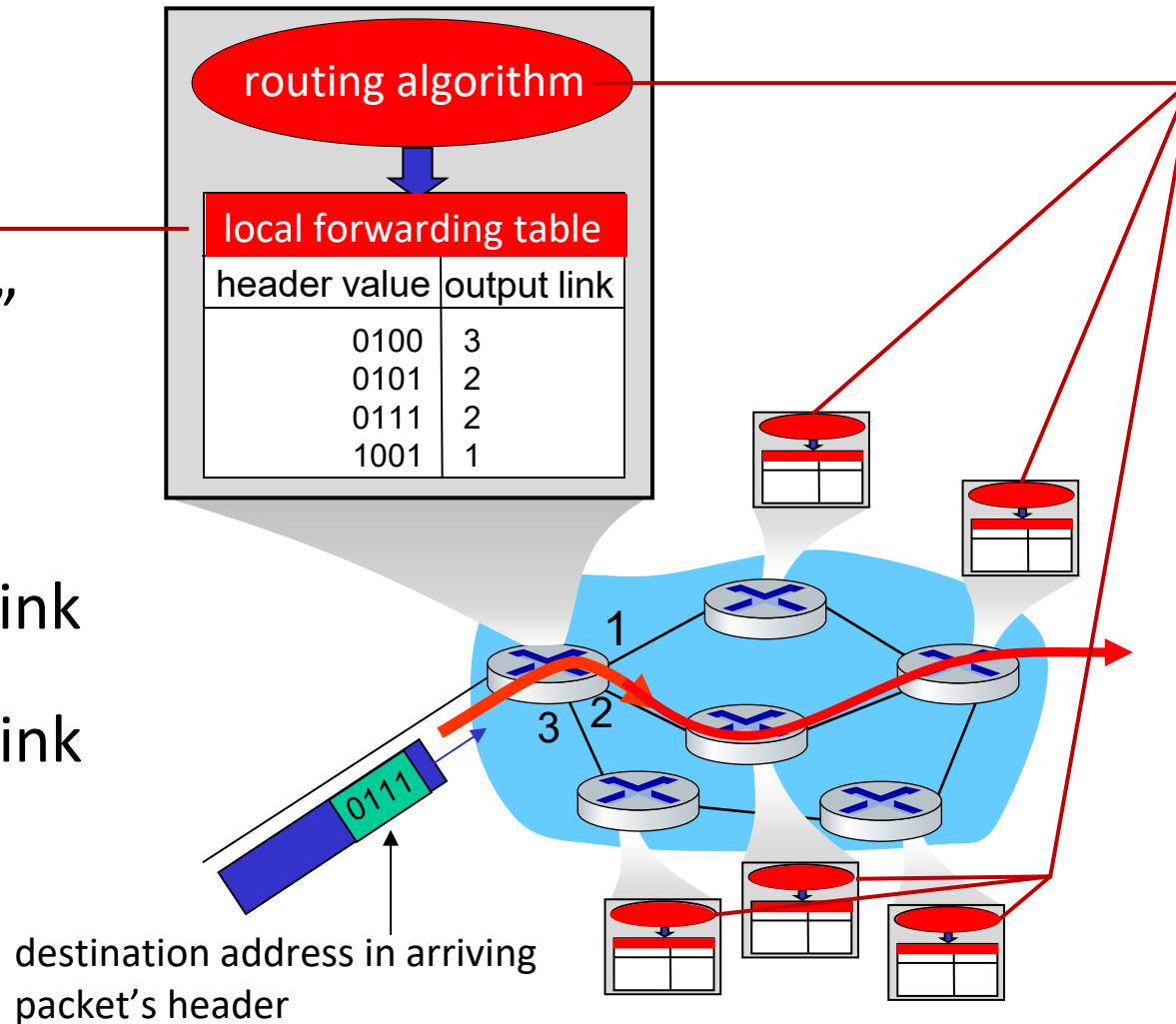
- mesh of interconnected routers
- **packet-switching**: hosts break application-layer messages into *packets*
 - network **forwards** packets from one router to the next, across links on path from **source to destination**



Two key network-core functions

Forwarding:

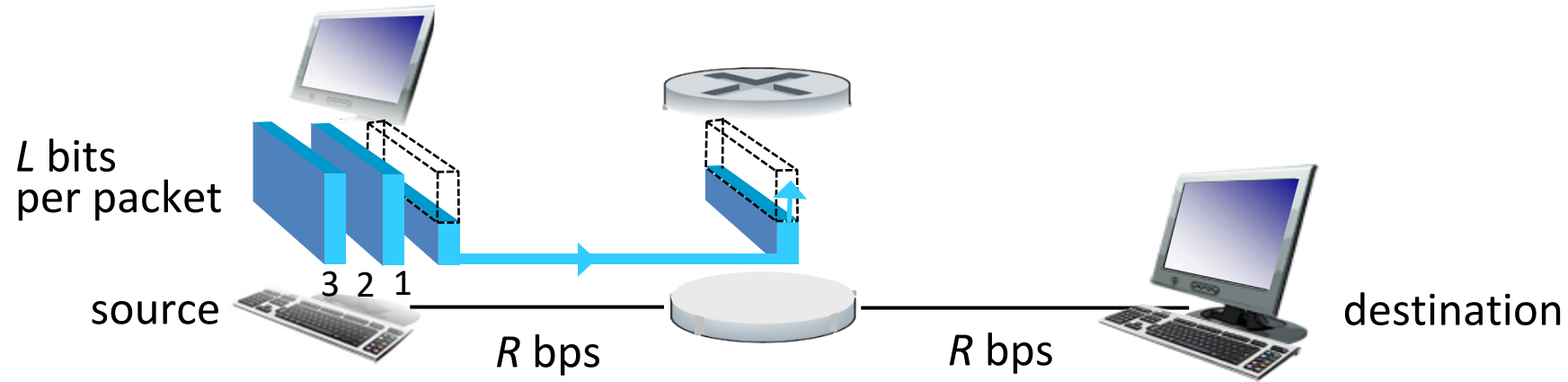
- aka “switching”
- *local* action: move arriving packets from router’s input link to appropriate router output link



Routing:

- *global* action: determine source-destination paths taken by packets
- routing algorithms

Packet-switching: store-and-forward

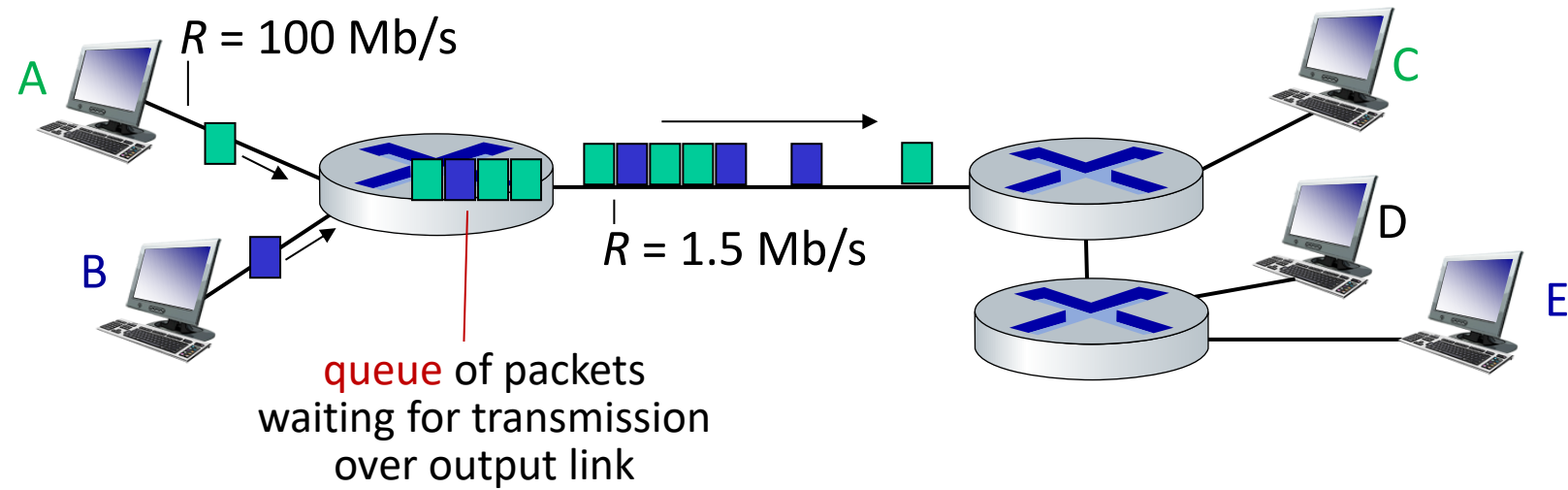


- **packet transmission delay:** takes L/R seconds to transmit (push out) L -bit packet into link at R bps
- **store and forward:** entire packet must arrive at router before it can be transmitted on next link

One-hop numerical example:

- $L = 10$ Kbits
- $R = 100$ Mbps
- one-hop transmission delay = 0.1 msec

Packet-switching: queueing

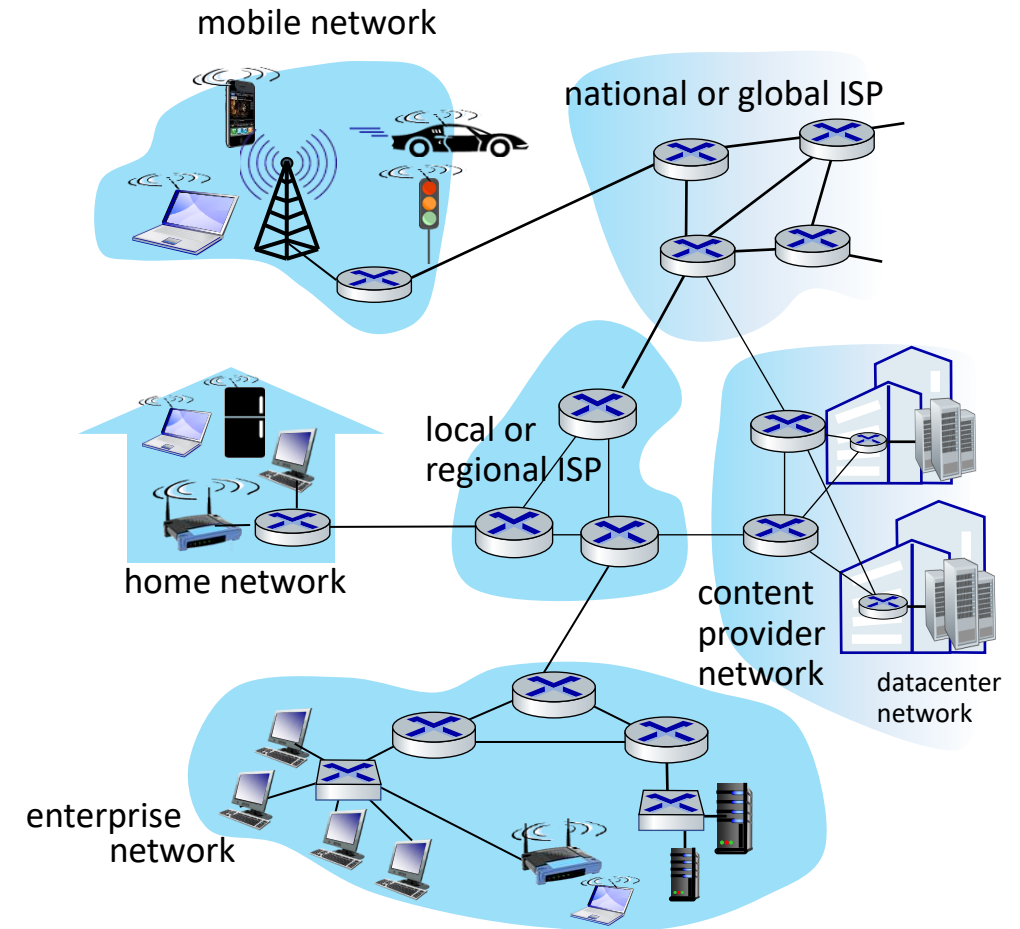


Queueing occurs when work arrives faster than it can be serviced:



Internet structure: a “network of networks”

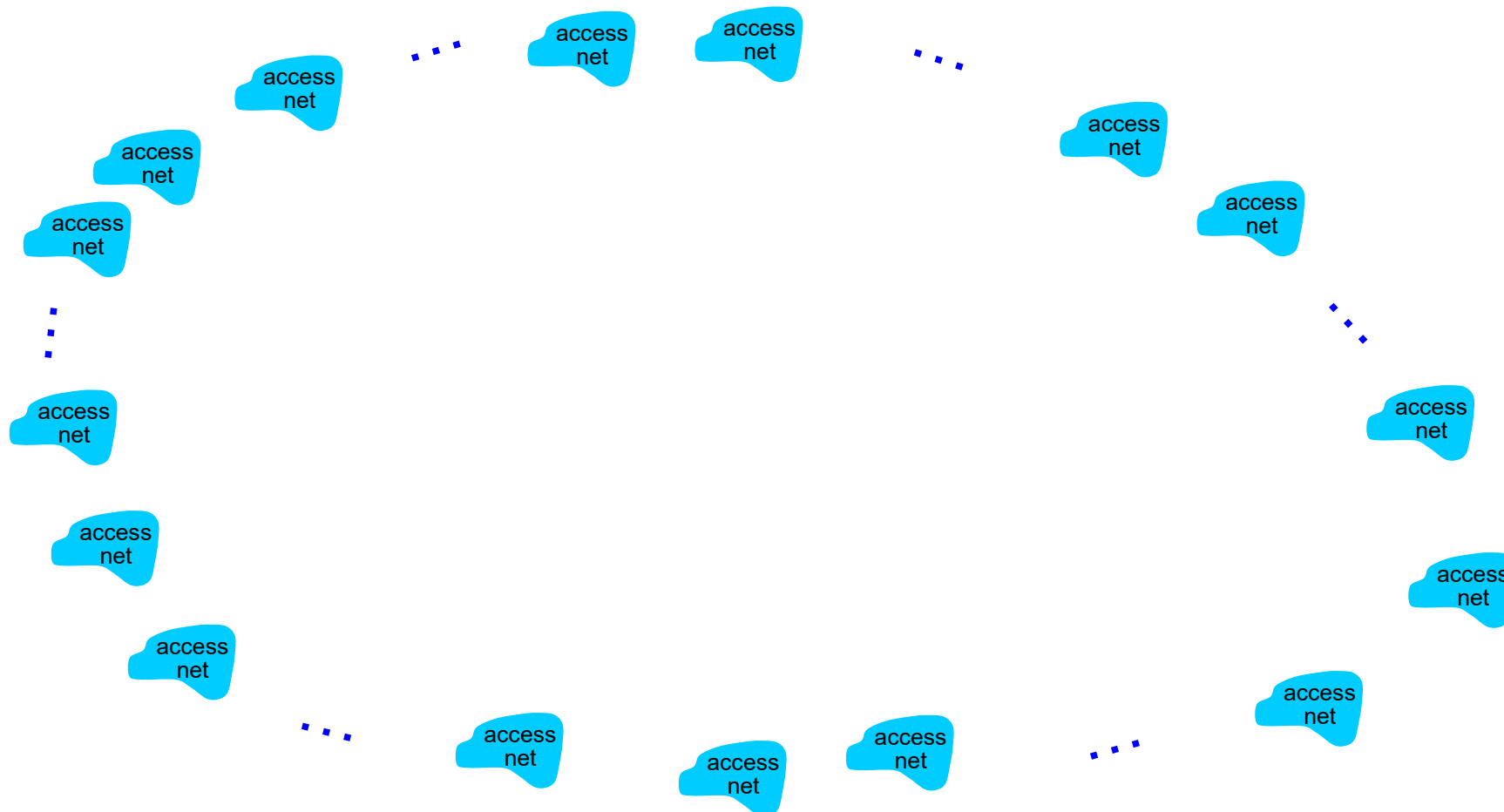
- hosts connect to Internet via **access** Internet Service Providers (ISPs)
- access ISPs in turn must be interconnected
 - so that *any* two hosts (*anywhere!*) can send packets to each other
- resulting network of networks is very complex
 - evolution driven by **economics**, **national policies**



Let's take a stepwise approach to describe current Internet structure

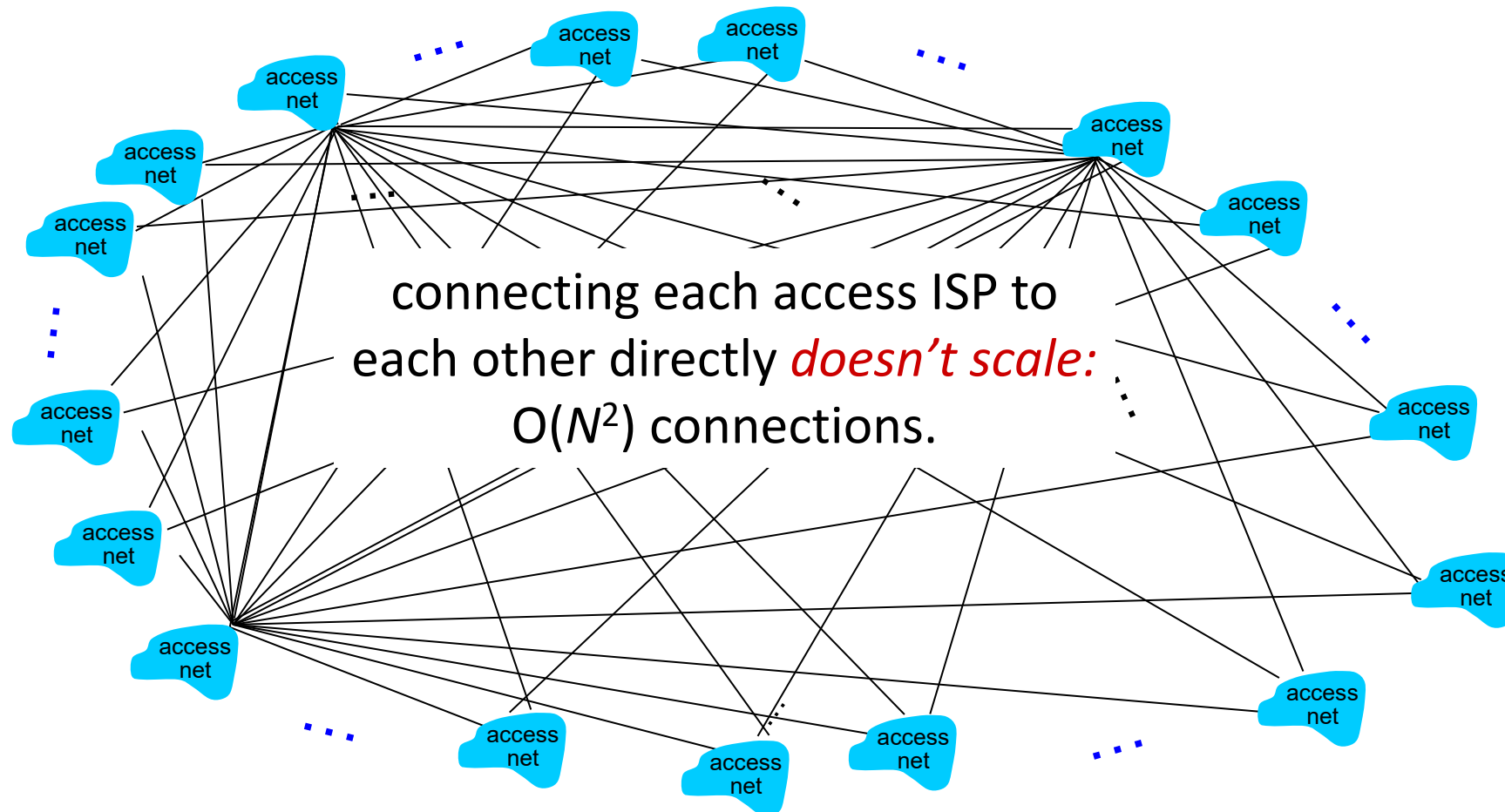
Internet structure: a “network of networks”

Question: given *millions* of access ISPs, how to connect them together?



Internet structure: a “network of networks”

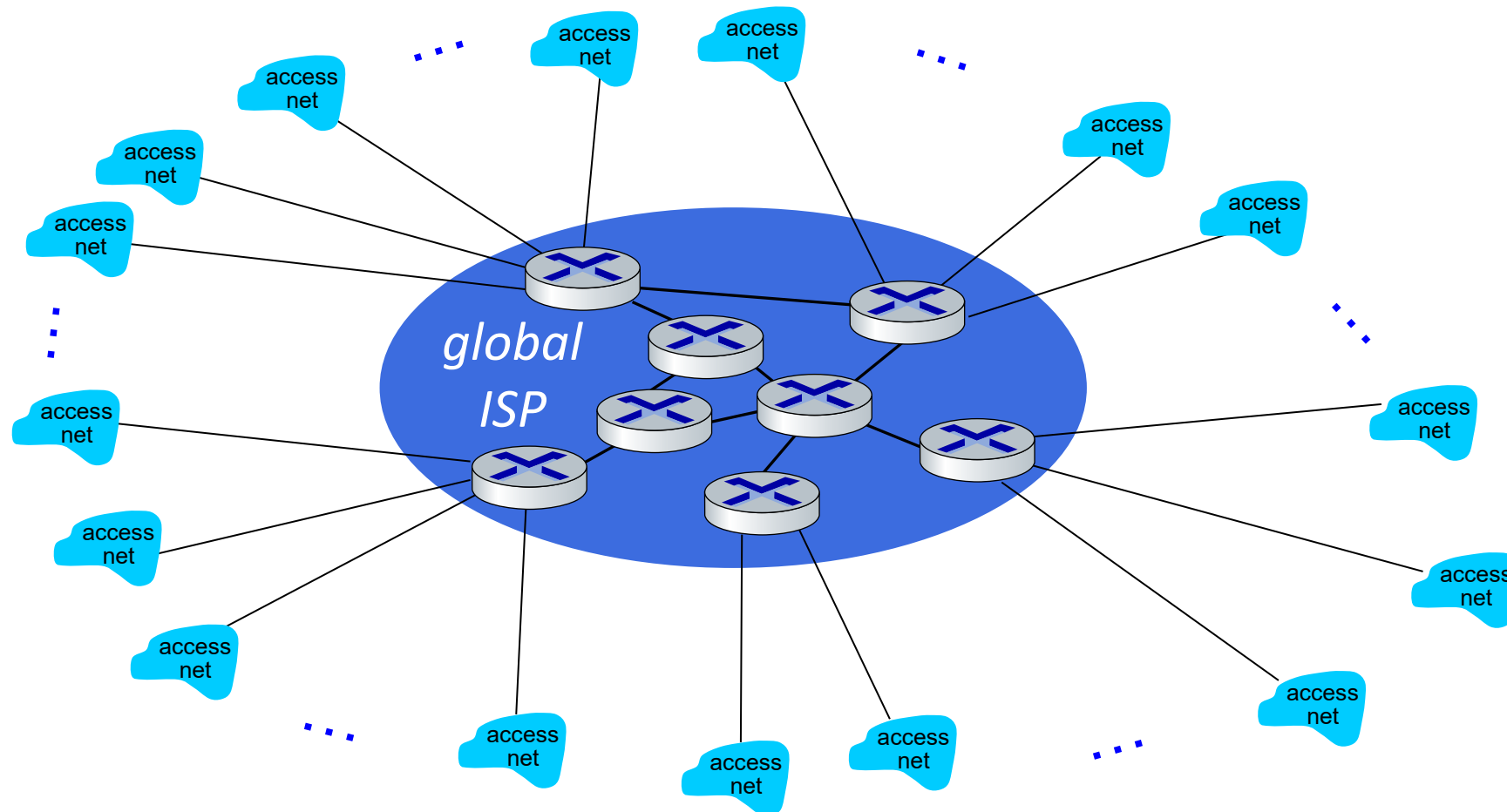
Question: given *millions* of access ISPs, how to connect them together?



Internet structure: a “network of networks”

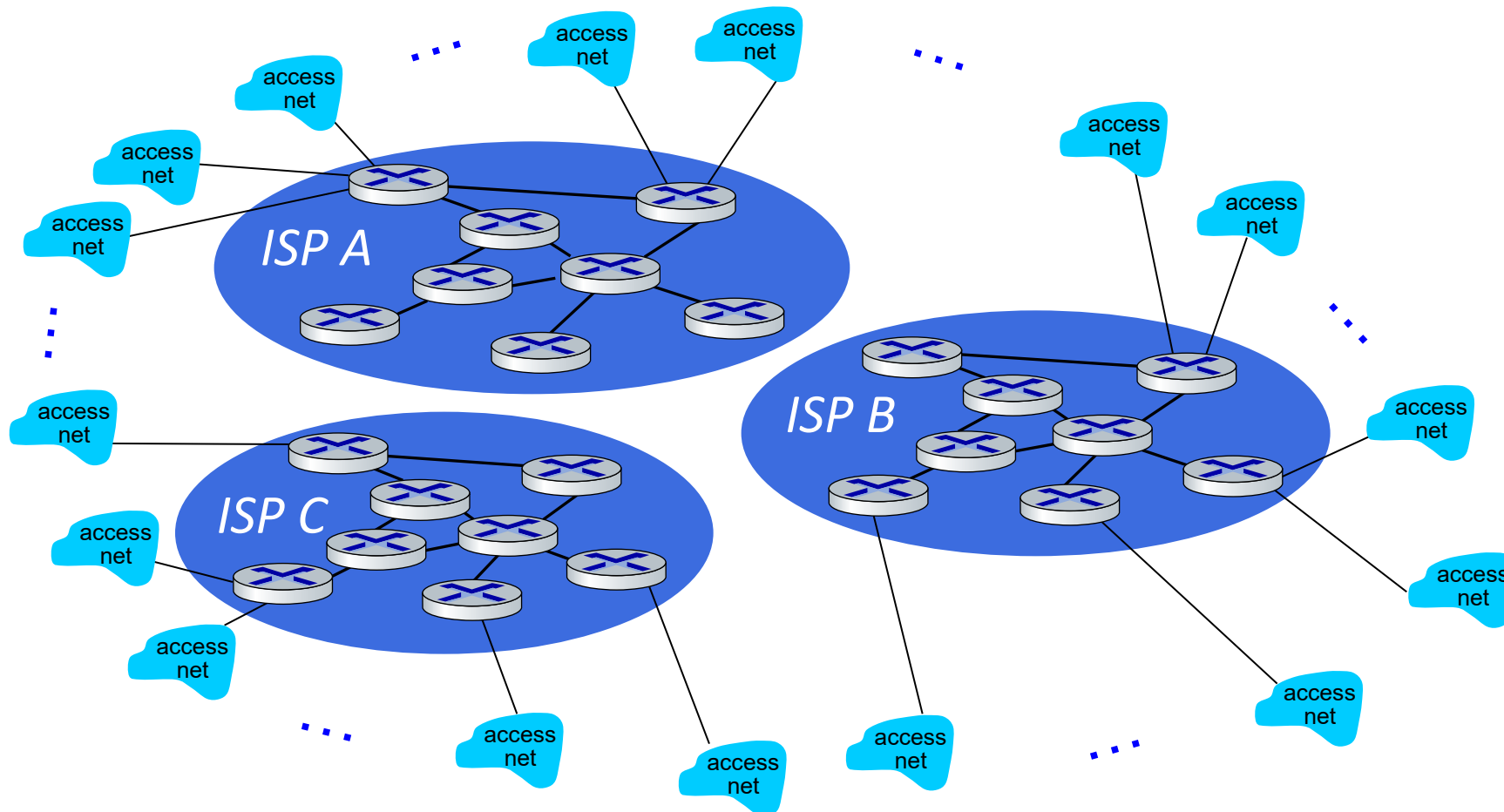
Option: connect each access ISP to one global transit ISP?

Customer and provider ISPs have economic agreement.



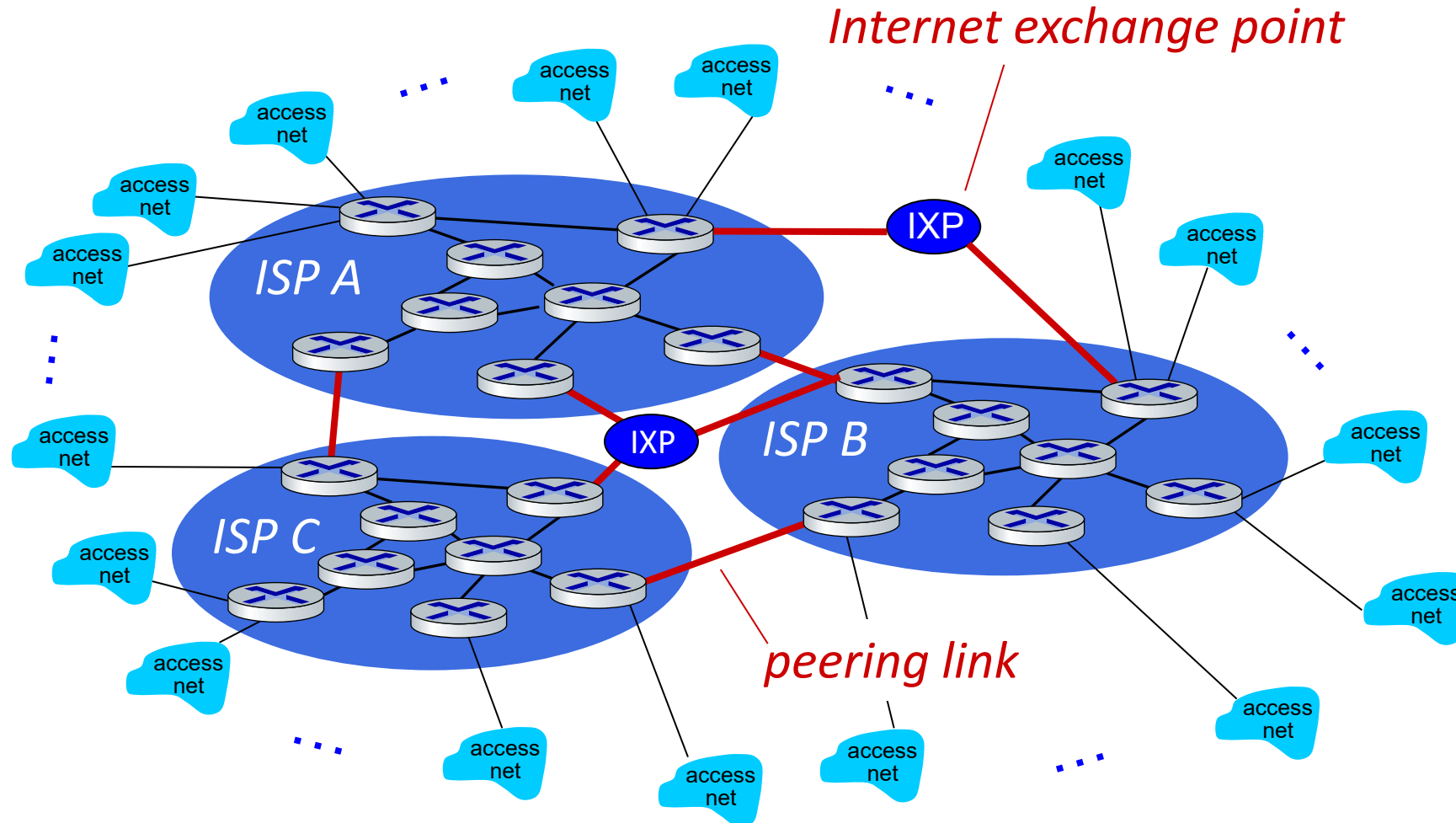
Internet structure: a “network of networks”

But if one global ISP is viable business, there will be competitors



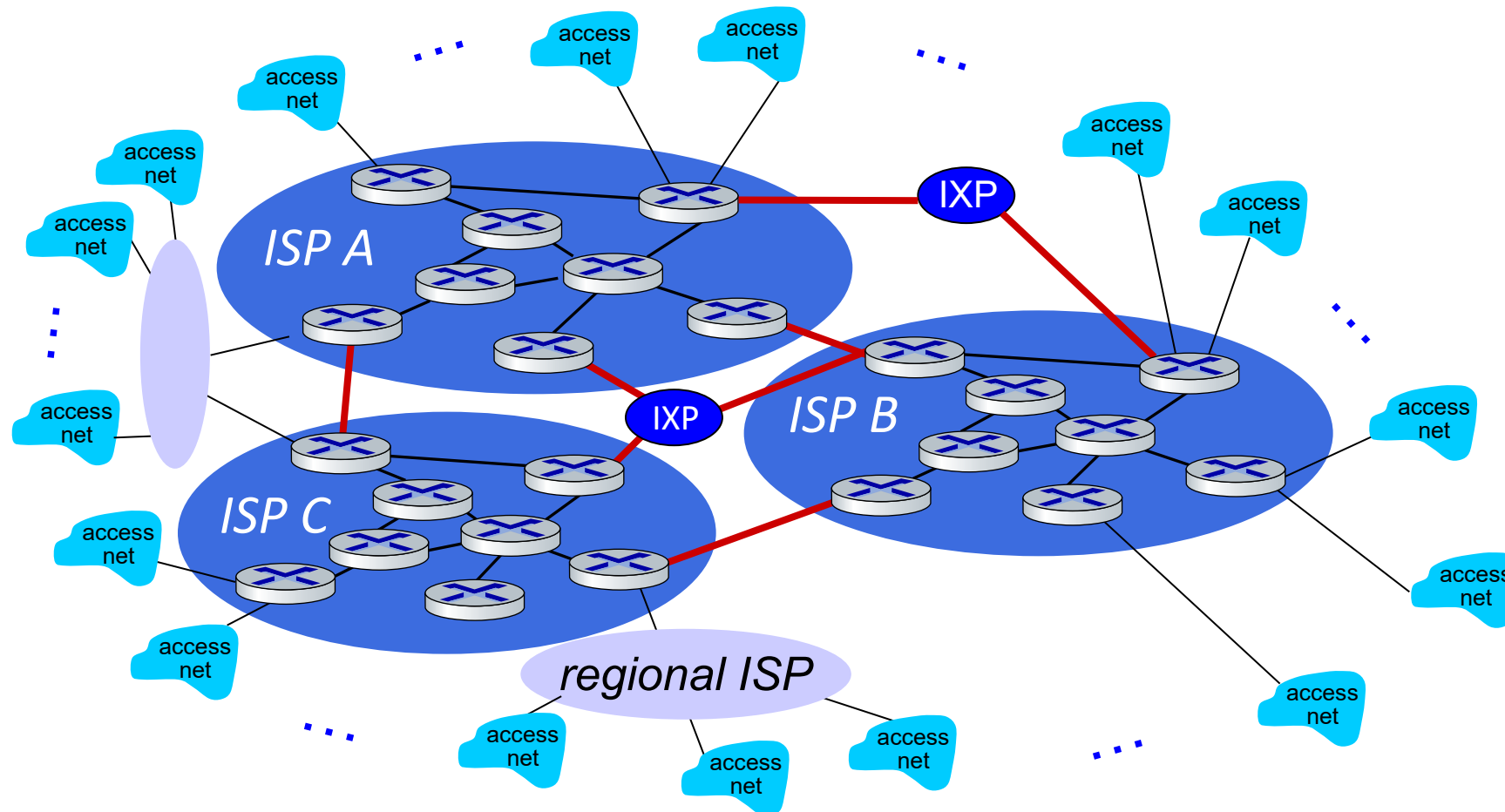
Internet structure: a “network of networks”

But if one global ISP is viable business, there will be competitors who will want to be connected



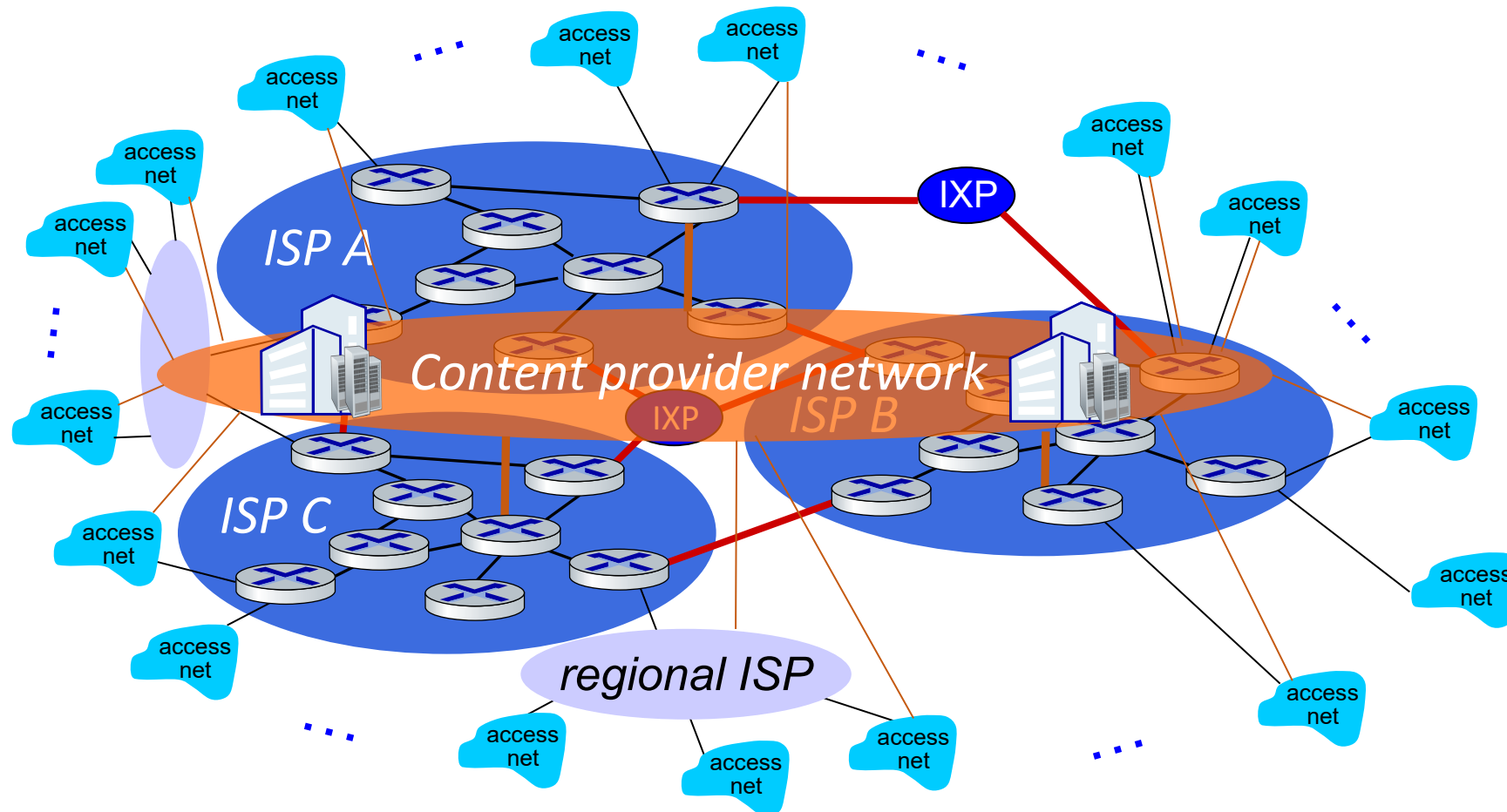
Internet structure: a “network of networks”

... and regional networks may arise to connect access nets to ISPs

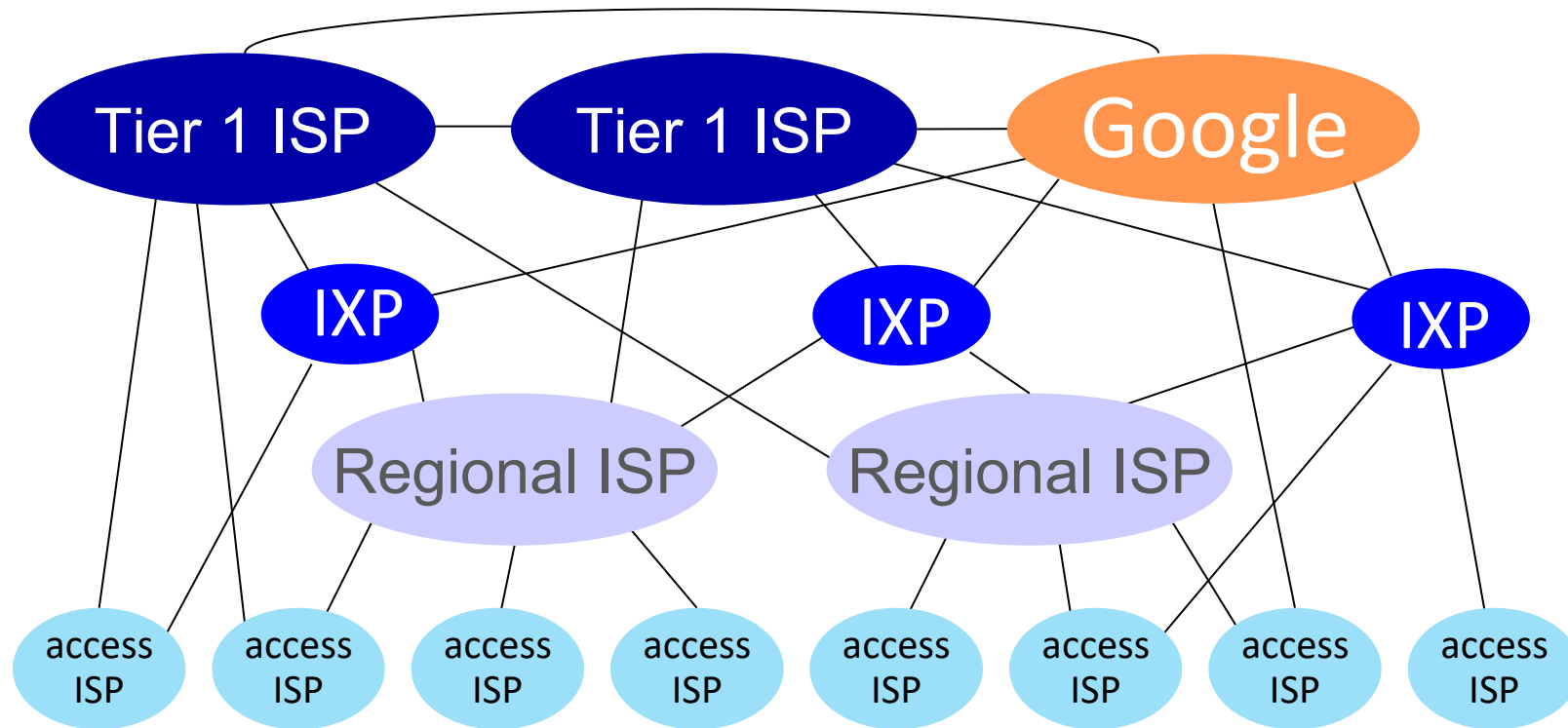


Internet structure: a “network of networks”

... and content provider networks (e.g., Google, Microsoft, Akamai) may run their own network, to bring services, content close to end users



Internet structure: a “network of networks”



At “center”: small # of well-connected large networks

- **“tier-1” commercial ISPs** (e.g., Level 3, Sprint, AT&T, NTT), national & international coverage
- **content provider networks** (e.g., Google, Facebook): private network that connects its data centers to Internet, often bypassing tier-1, regional ISPs

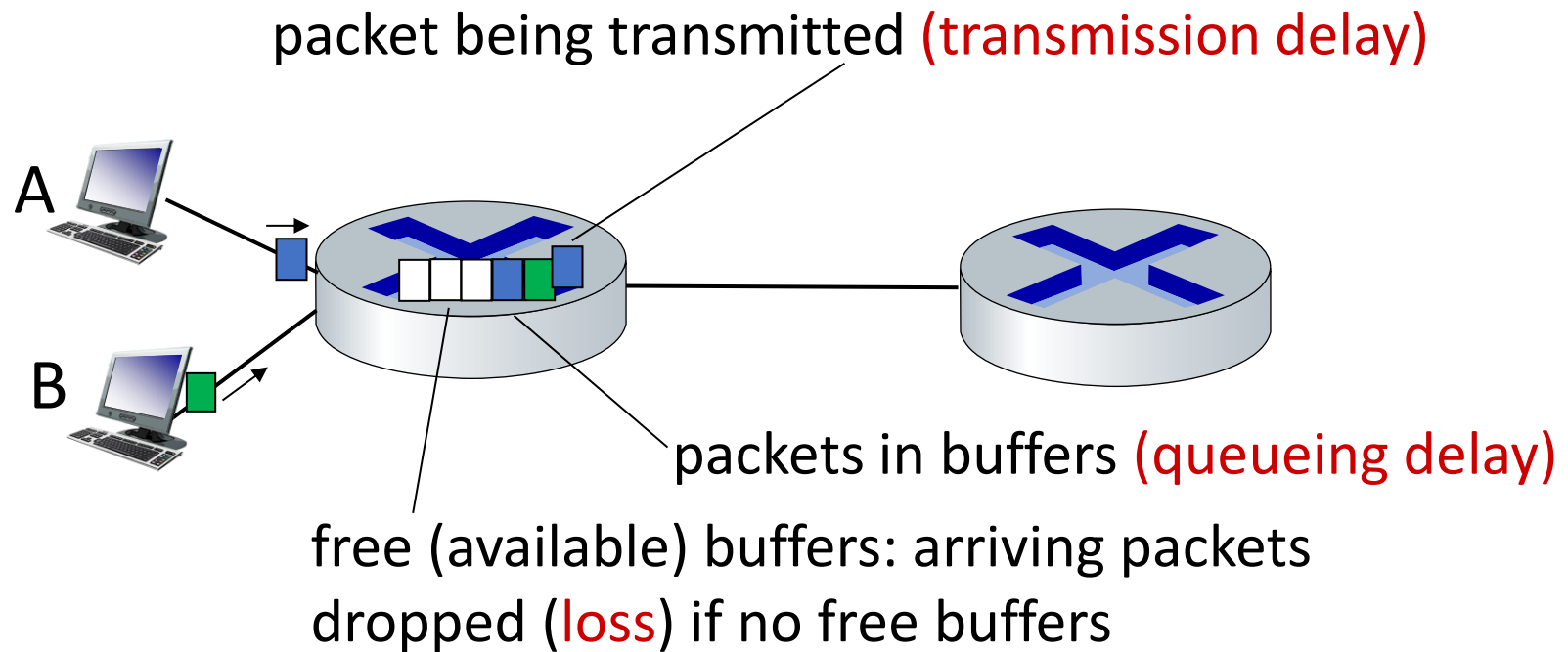
Chapter 1: roadmap

- What *is* the Internet?
- What *is* a protocol?
- Network edge: hosts, access network, physical media
- Network core: packet/circuit switching, internet structure
- **Performance: loss, delay, throughput**
- Security
- Protocol layers, service models
- History

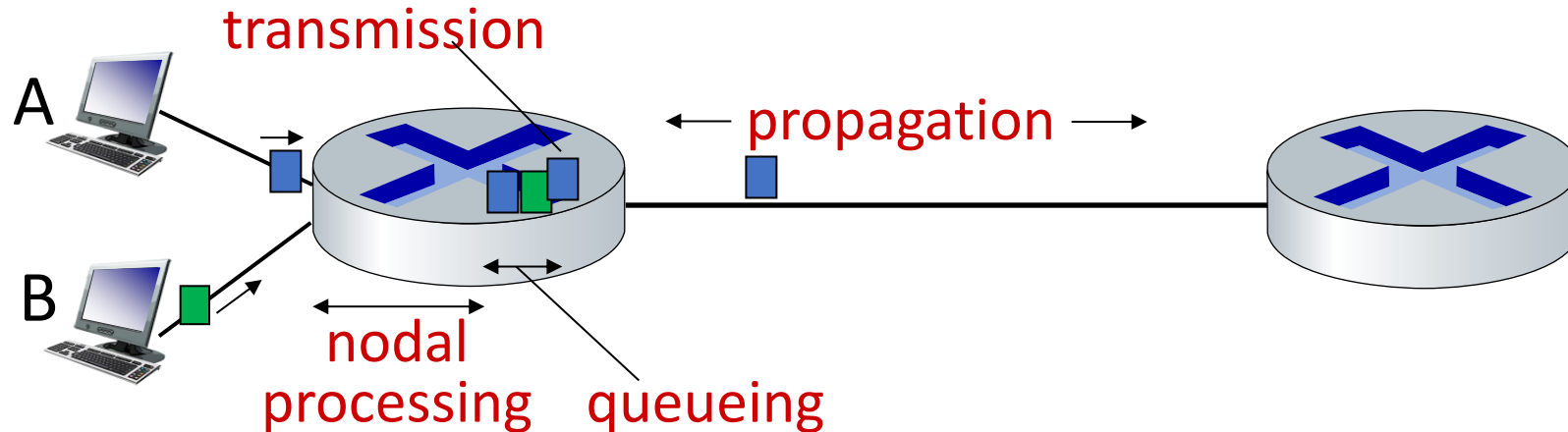


How do packet delay and loss occur?

- packets *queue* in router buffers, waiting for turn for transmission
 - queue length grows when arrival rate to link (temporarily) exceeds output link capacity
- packet *loss* occurs when memory to hold queued packets fills up



Packet delay: four sources



$$d_{\text{nodal}} = d_{\text{proc}} + d_{\text{queue}} + d_{\text{trans}} + d_{\text{prop}}$$

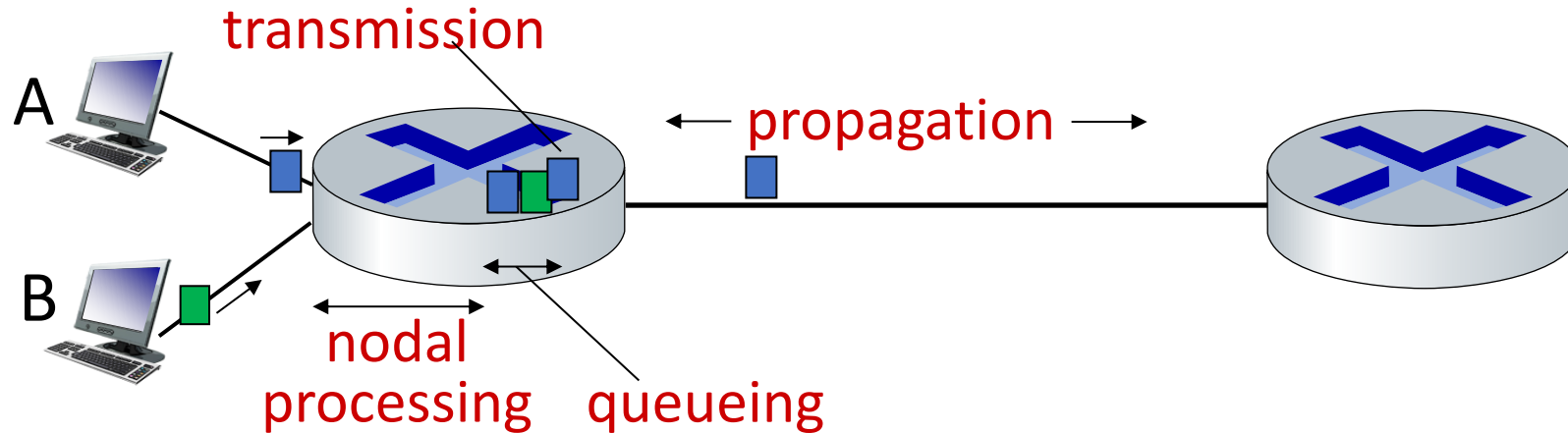
d_{proc} : nodal processing

- check bit errors
- determine output link
- typically < microsecs

d_{queue} : queueing delay

- time waiting at output link for transmission
- depends on congestion level of router

Packet delay: four sources



$$d_{\text{nodal}} = d_{\text{proc}} + d_{\text{queue}} + d_{\text{trans}} + d_{\text{prop}}$$

d_{trans} : transmission delay:

- L : packet length (bits)
- R : link transmission rate (bps)

▪ $d_{\text{trans}} = L/R$

d_{prop} : propagation delay:

- d : length of physical link
- s : propagation speed ($\sim 2 \times 10^8$ m/sec)

▪ $d_{\text{prop}} = d/s$

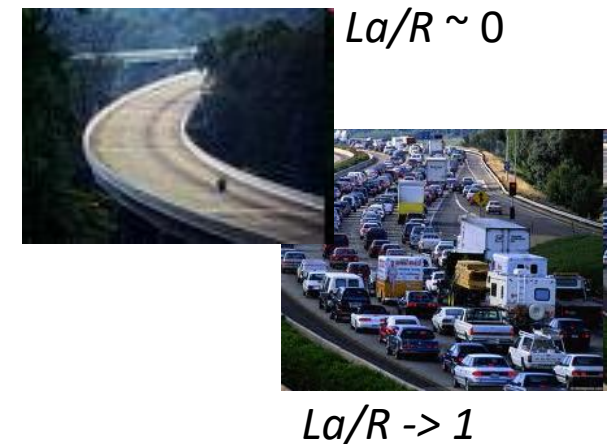
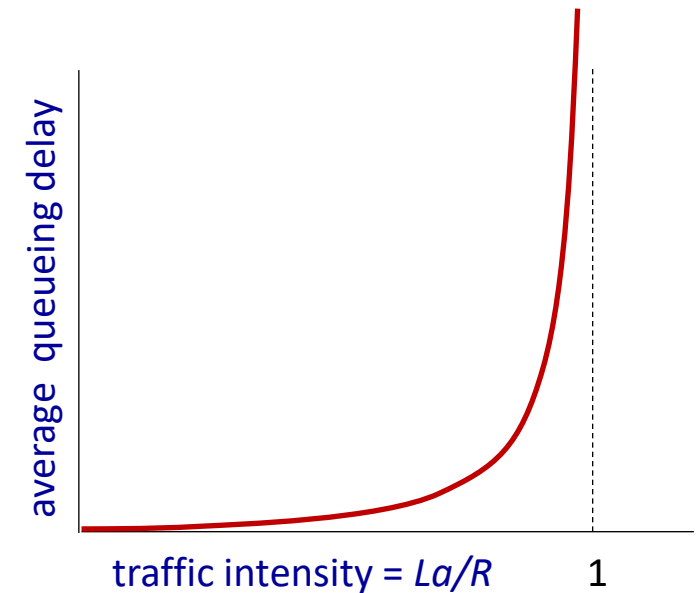
d_{trans} and d_{prop}
very different

Packet queueing delay (revisited)

- a : average packet arrival rate
- L : packet length (bits)
- R : link bandwidth (bit transmission rate)

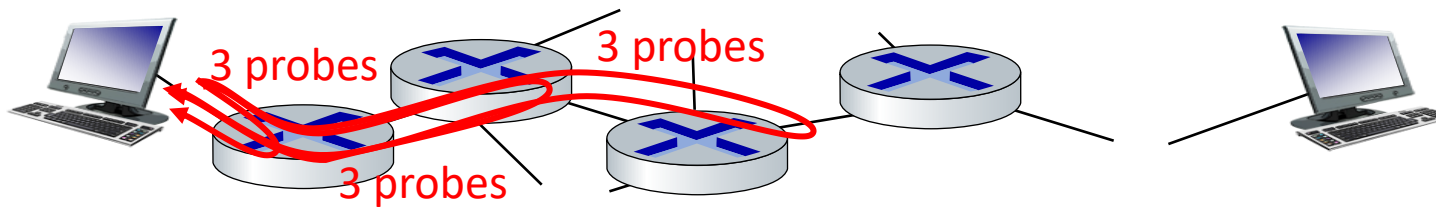
$$\frac{L \cdot a}{R} : \frac{\text{arrival rate of bits}}{\text{service rate of bits}} \quad \text{“traffic intensity”}$$

- $La/R \sim 0$: avg. queueing delay small
- $La/R \rightarrow 1$: avg. queueing delay large
- $La/R > 1$: more “work” arriving is more than can be serviced - average delay infinite!



“Real” Internet delays and routes

- what do “real” Internet delay & loss look like?
- **traceroute** program: provides delay measurement from source to router along end-end Internet path towards destination. For all i :
 - sends three packets that will reach router i on path towards destination (with time-to-live field value of i)
 - router i will return packets to sender
 - sender measures time interval between transmission and reply



Real Internet delays and routes

traceroute: gaia.cs.umass.edu to www.eurecom.fr

3 delay measurements from
gaia.cs.umass.edu to cs-gw.cs.umass.edu

3 delay measurements
to border1-rt-fa5-1-0.gw.umass.edu

trans-oceanic link

looks like delays
decrease! Why?

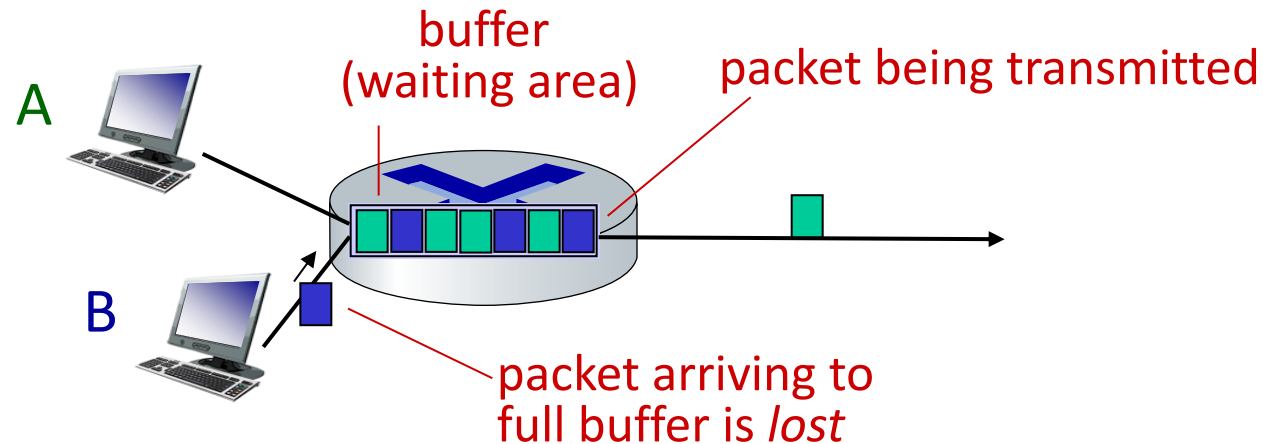
* means no response (probe lost, router not replying)

1	cs-gw (128.119.240.254)	1 ms	1 ms	2 ms
2	border1-rt-fa5-1-0.gw.umass.edu (128.119.3.145)	1 ms	1 ms	2 ms
3	cht-vbns.gw.umass.edu (128.119.3.130)	6 ms	5 ms	5 ms
4	jn1-at1-0-0-19.wor.vbns.net (204.147.132.129)	16 ms	11 ms	13 ms
5	jn1-so7-0-0-0.wae.vbns.net (204.147.136.136)	21 ms	18 ms	18 ms
6	abilene-vbns.abilene.ucaid.edu (198.32.11.9)	22 ms	18 ms	22 ms
7	nycm-wash.abilene.ucaid.edu (198.32.8.46)	22 ms	22 ms	22 ms
8	62.40.103.253 (62.40.103.253)	104 ms	109 ms	106 ms
9	de2-1.de1.de.geant.net (62.40.96.129)	109 ms	102 ms	104 ms
10	de.fr1.fr.geant.net (62.40.96.50)	113 ms	121 ms	114 ms
11	renater-gw.fr1.fr.geant.net (62.40.103.54)	112 ms	114 ms	112 ms
12	nio-n2.cssi.renater.fr (193.51.206.13)	111 ms	114 ms	116 ms
13	nice.cssi.renater.fr (195.220.98.102)	123 ms	125 ms	124 ms
14	r3t2-nice.cssi.renater.fr (195.220.98.110)	126 ms	126 ms	124 ms
15	eurecom-valbonne.r3t2.ft.net (193.48.50.54)	135 ms	128 ms	133 ms
16	194.214.211.25 (194.214.211.25)	126 ms	128 ms	126 ms
17	***			
18	***			
19	fantasia.eurecom.fr (193.55.113.142)	132 ms	128 ms	136 ms

* Do some traceroutes from exotic countries at www.traceroute.org

Packet loss

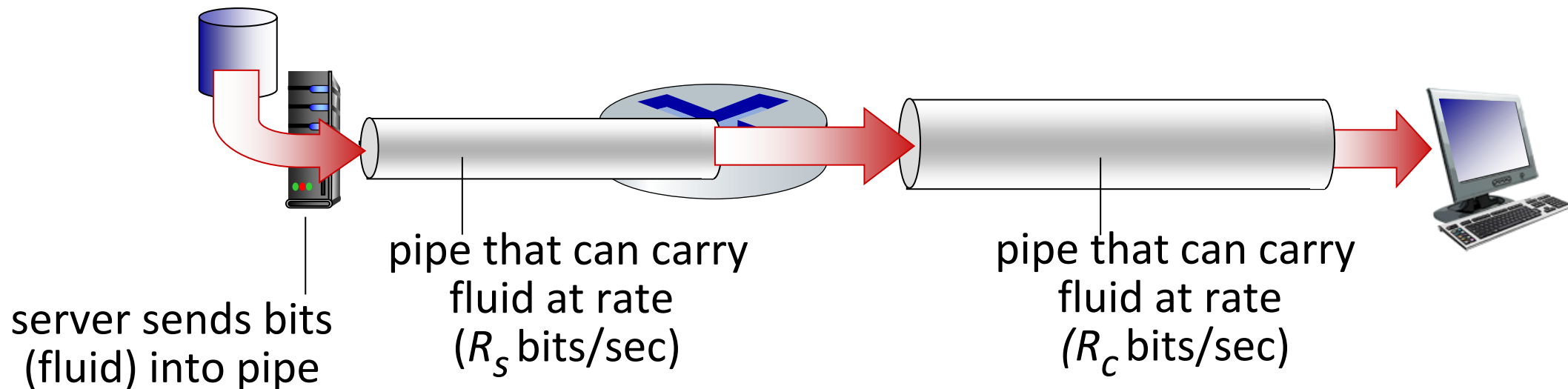
- queue (aka buffer) preceding link in buffer has finite capacity
- packet arriving to full queue dropped (aka lost)
- lost packet may be retransmitted by previous node, by source end system, or not at all



* Check out the Java applet for an interactive animation (on publisher's website) of queuing and loss

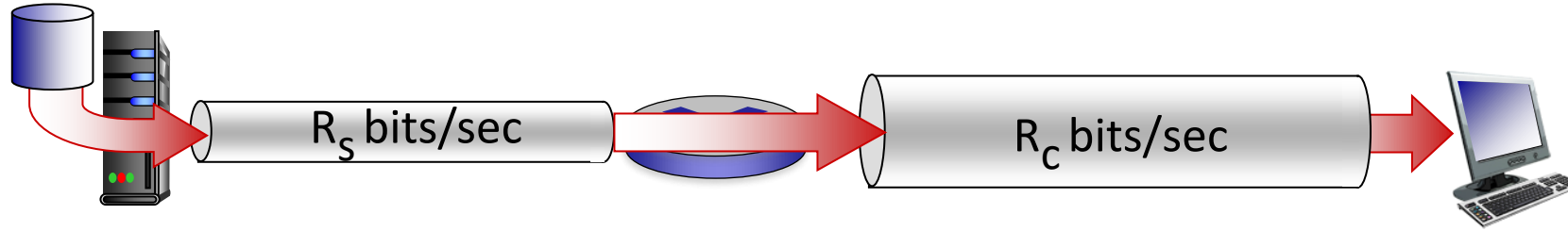
Throughput

- *throughput*: rate (bits/time unit) at which bits are being sent from sender to receiver
 - *instantaneous*: rate at given point in time
 - *average*: rate over longer period of time

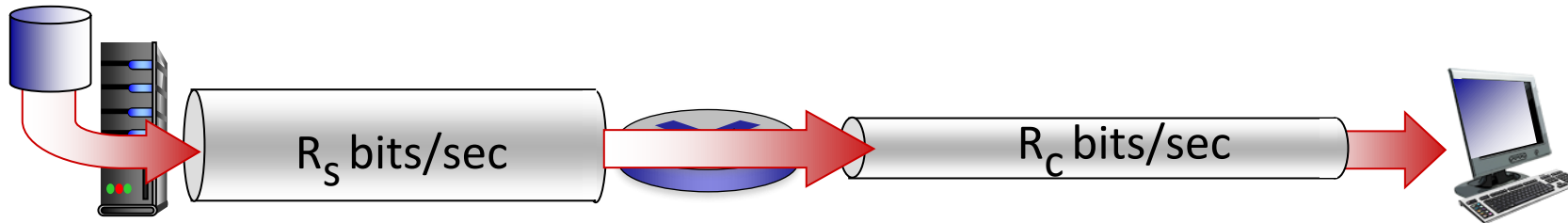


Throughput

$R_s < R_c$ What is average end-end throughput?



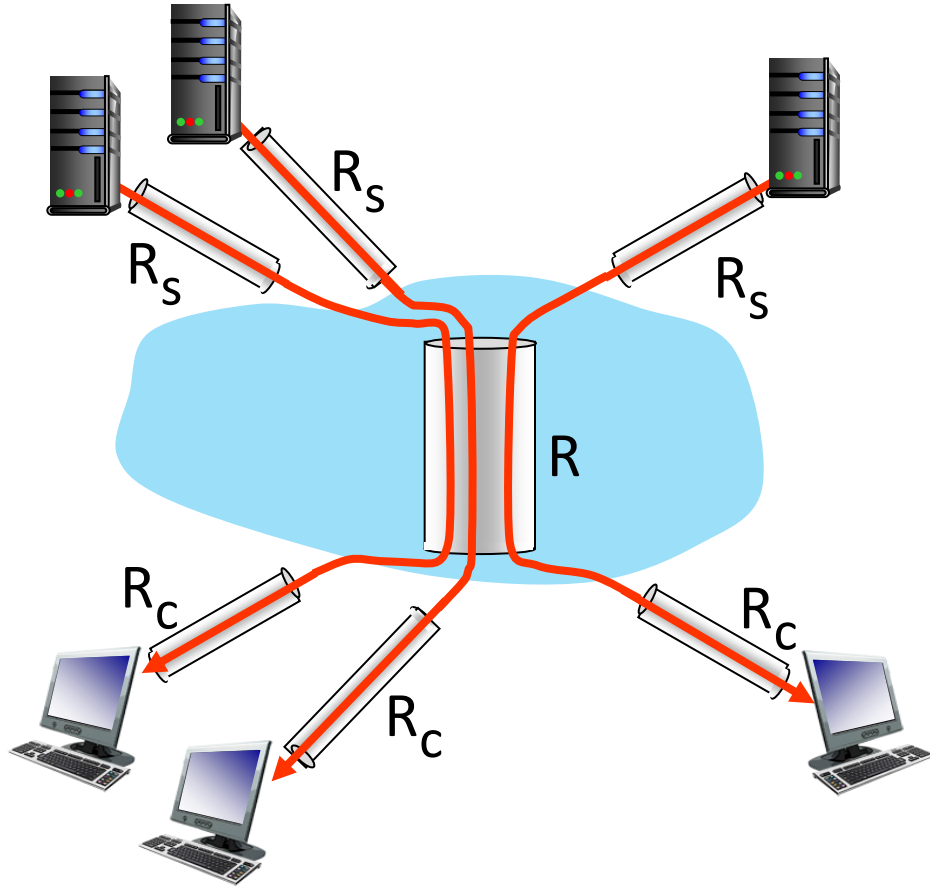
$R_s > R_c$ What is average end-end throughput?



bottleneck link

link on end-end path that constrains end-end throughput

Throughput: network scenario



10 connections (fairly) share
backbone bottleneck link R bits/sec

- per-connection end-end throughput:
 $\min(R_c, R_s, R/10)$
- in practice: R_c or R_s is often bottleneck

* Check out the online interactive exercises for more examples: http://gaia.cs.umass.edu/kurose_ross/

Chapter 1: roadmap

- What *is* the Internet?
- What *is* a protocol?
- Network edge: hosts, access network, physical media
- Network core: packet/circuit switching, internet structure
- Performance: loss, delay, throughput
- **Security**
- Protocol layers, service models
- History



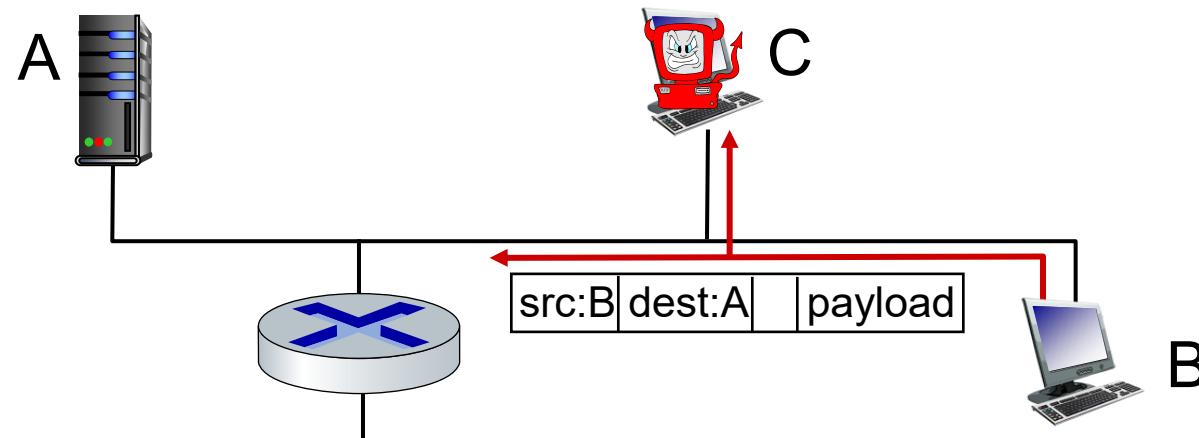
Network security

- Internet not originally designed with (much) security in mind
 - *original vision*: “a group of mutually trusting users attached to a transparent network” 😊
 - Internet protocol designers playing “catch-up”
 - security considerations in all layers!
- We now need to think about:
 - how bad entities can attack computer networks
 - how we can defend networks against attacks
 - how to design architectures that are immune to attacks

Bad entities: packet interception

packet “sniffing”:

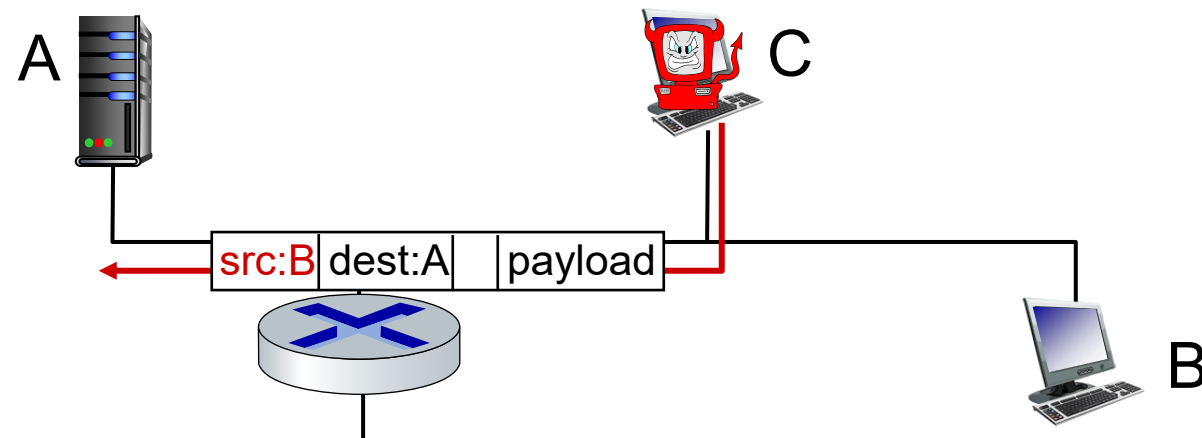
- broadcast media (shared Ethernet, wireless)
- promiscuous network interface reads/records all packets (e.g., including passwords!) passing by



Wireshark software used for our end-of-chapter labs is a (free) packet-sniffer

Bad entities: fake identity

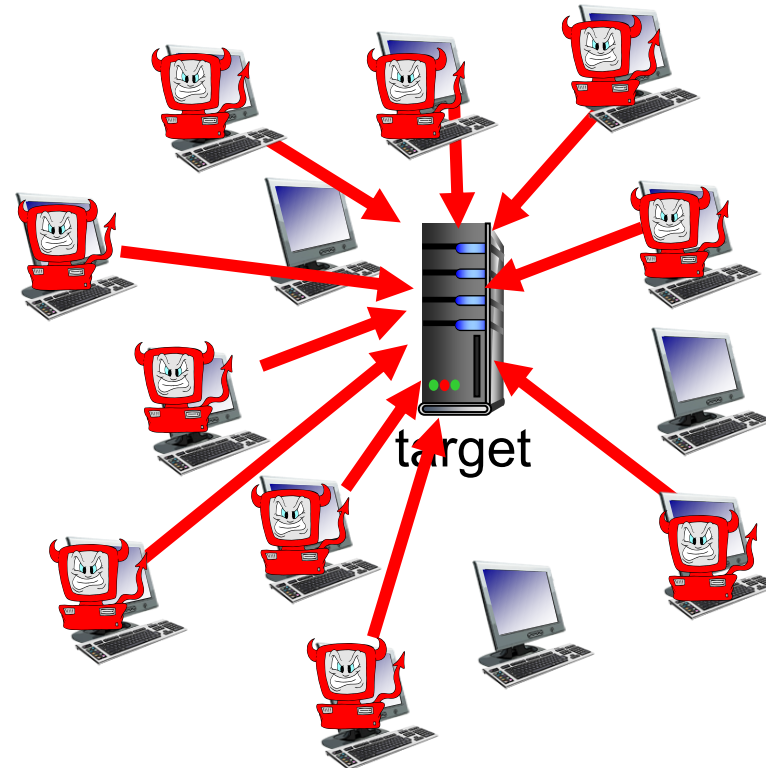
IP spoofing: injection of packet with false source address



Bad entities: denial of service

Denial of Service (DoS): attackers make resources (server, bandwidth) unavailable to legitimate traffic by overwhelming resource with bogus traffic

1. select target
2. break into hosts around the network (see botnet)
3. send packets to target from compromised hosts



Lines of defense:

- **authentication:** proving you are who you say you are
 - cellular networks provides hardware identity via SIM card; no such hardware assist in traditional Internet
- **confidentiality:** via encryption
- **integrity checks:** digital signatures prevent/detect tampering
- **access restrictions:** password-protected VPNs
- **firewalls:** specialized “middleboxes” in access and core networks:
 - off-by-default: filter incoming packets to restrict senders, receivers, applications
 - detecting/reacting to DOS attacks

... lots more on security (throughout, Chapter 8)

Chapter 1: roadmap

- What *is* the Internet?
- What *is* a protocol?
- Network edge: hosts, access network, physical media
- Network core: packet/circuit switching, internet structure
- Performance: loss, delay, throughput
- Security
- Protocol layers, service models
- History



Protocol “layers” and reference models

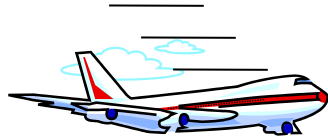
Networks are complex,
with many “pieces”:

- hosts
- routers
- links of various media
- applications
- protocols
- hardware, software

Question: is there any
hope of *organizing*
structure of network?

- and/or our *discussion*
of networks?

Example: organization of air travel



————— *end-to-end transfer of person plus baggage* —————→

ticket (purchase)

baggage (check)

gates (load)

runway takeoff

airplane routing

ticket (complain)

baggage (claim)

gates (unload)

runway landing

airplane routing

airplane routing

How would you *define/discuss* the *system* of airline travel?

- a series of steps, involving many services

Example: organization of air travel



layers: each layer implements a service

- via its own internal-layer actions
- relying on services provided by layer below

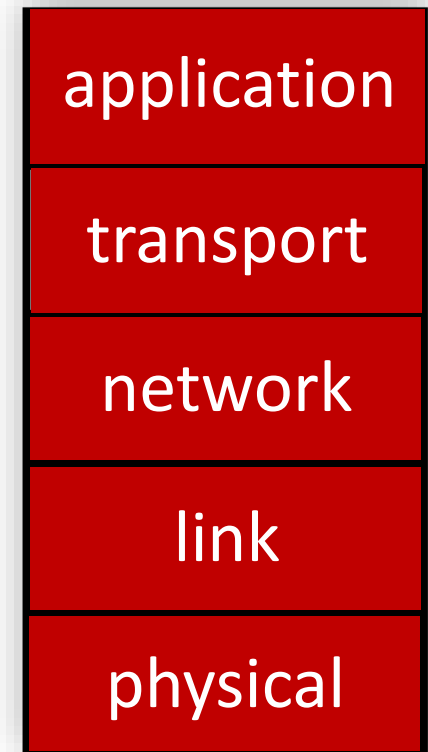
Why layering?

Approach to designing/discussing complex systems:

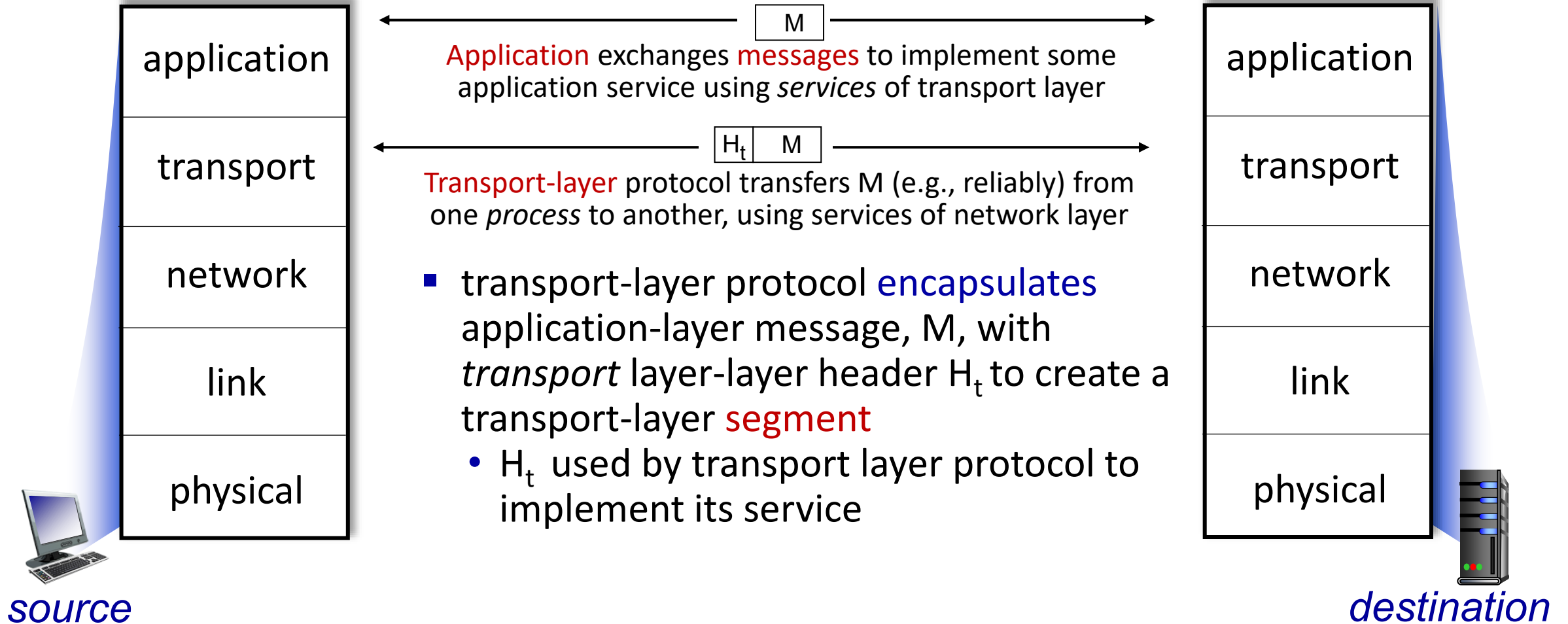
- explicit structure allows identification, relationship of system's pieces
 - layered *reference model* for discussion
- modularization eases maintenance, updating of system
 - change in layer's service *implementation*: transparent to rest of system
 - e.g., change in gate procedure doesn't affect rest of system

Layered Internet protocol stack

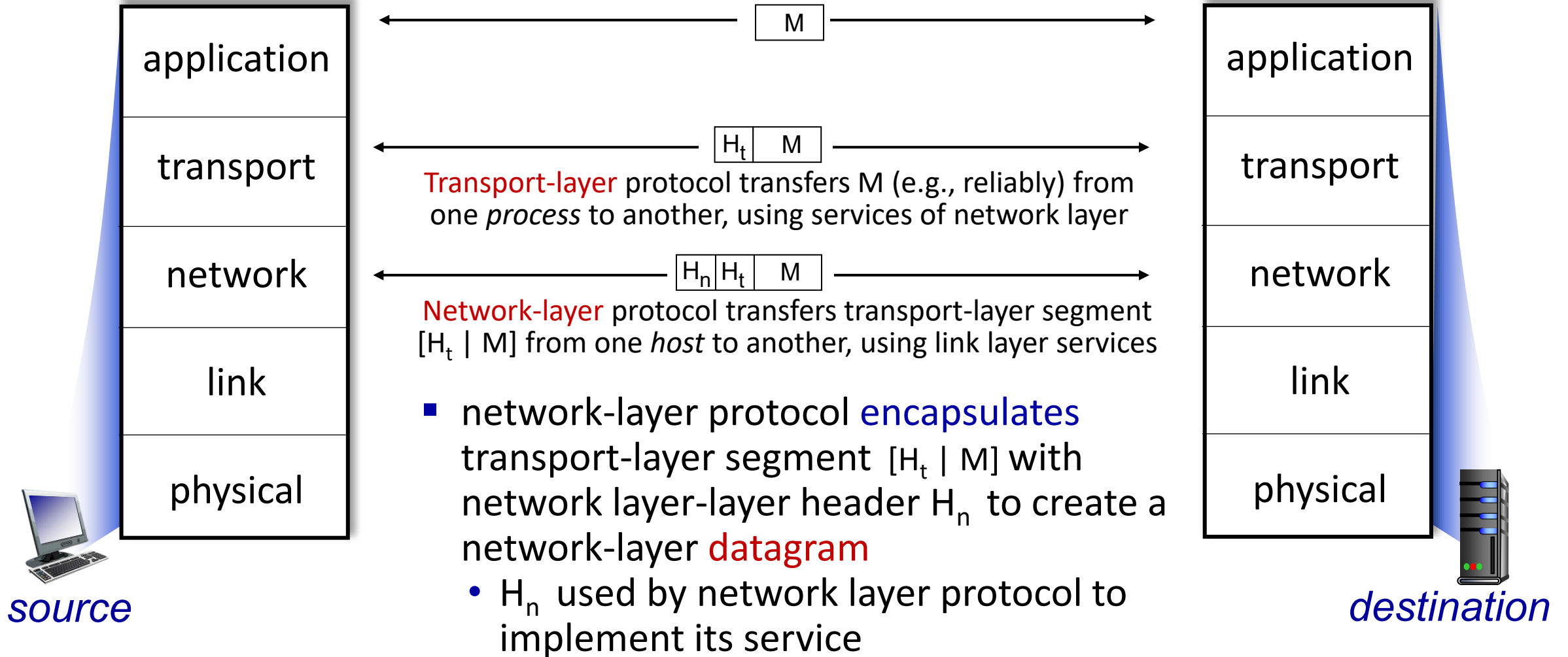
- *application*: supporting network applications
 - HTTP, IMAP, SMTP, DNS
- *transport*: process-process data transfer
 - TCP, UDP
- *network*: routing of datagrams from source to destination
 - IP, routing protocols
- *link*: data transfer between neighboring network elements
 - Ethernet, 802.11 (WiFi), PPP
- *physical*: bits “on the wire”



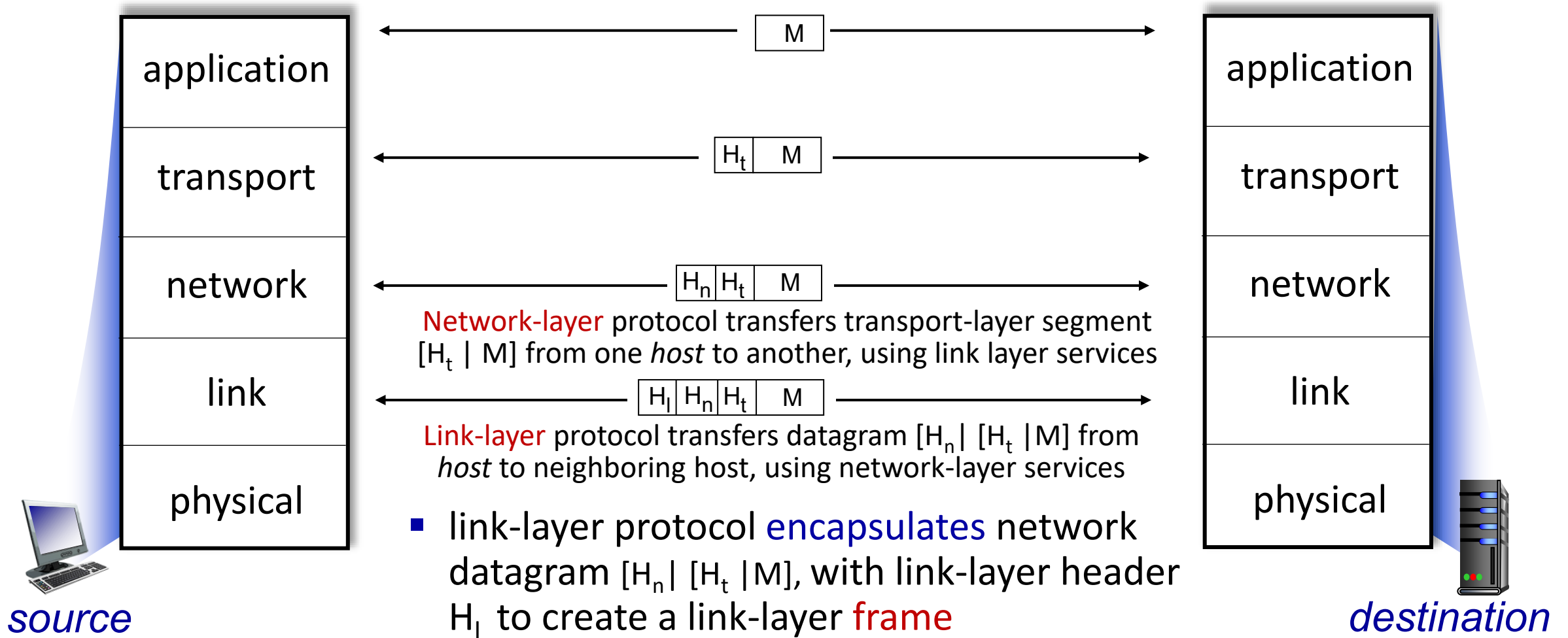
Services, Layering and Encapsulation



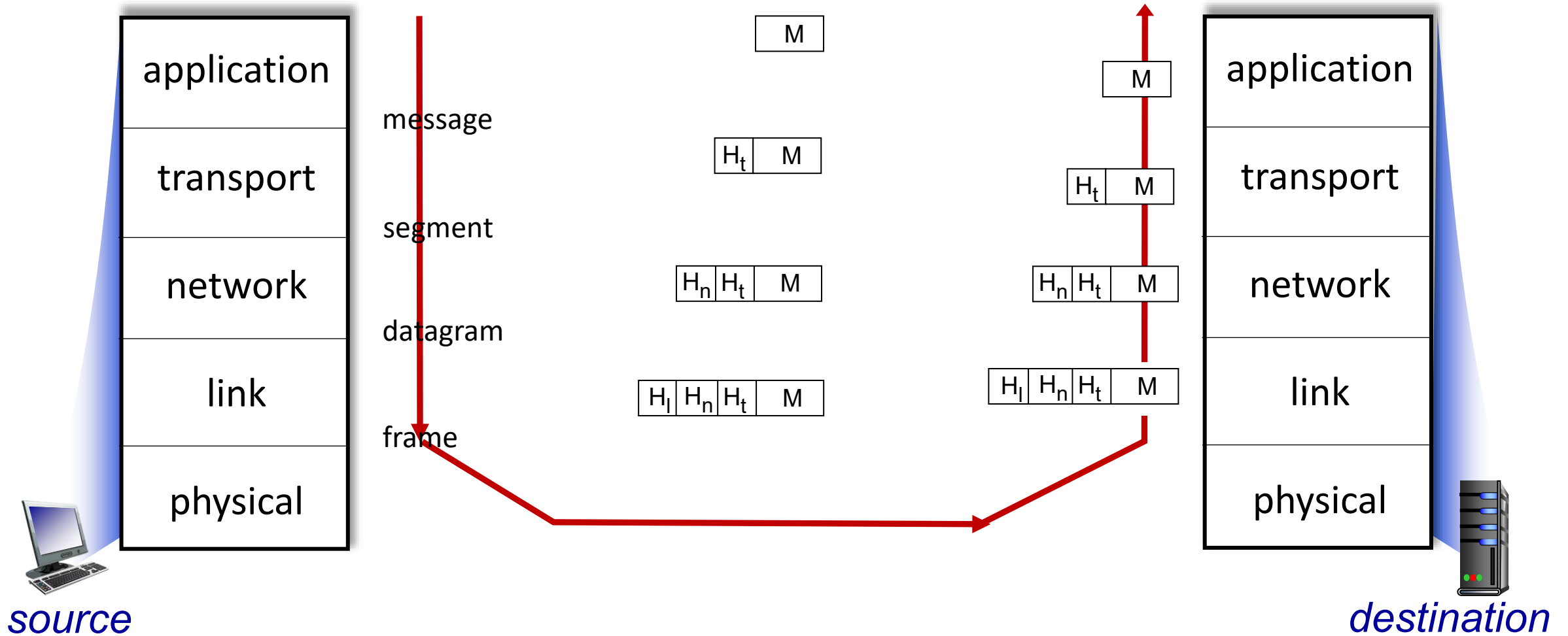
Services, Layering and Encapsulation



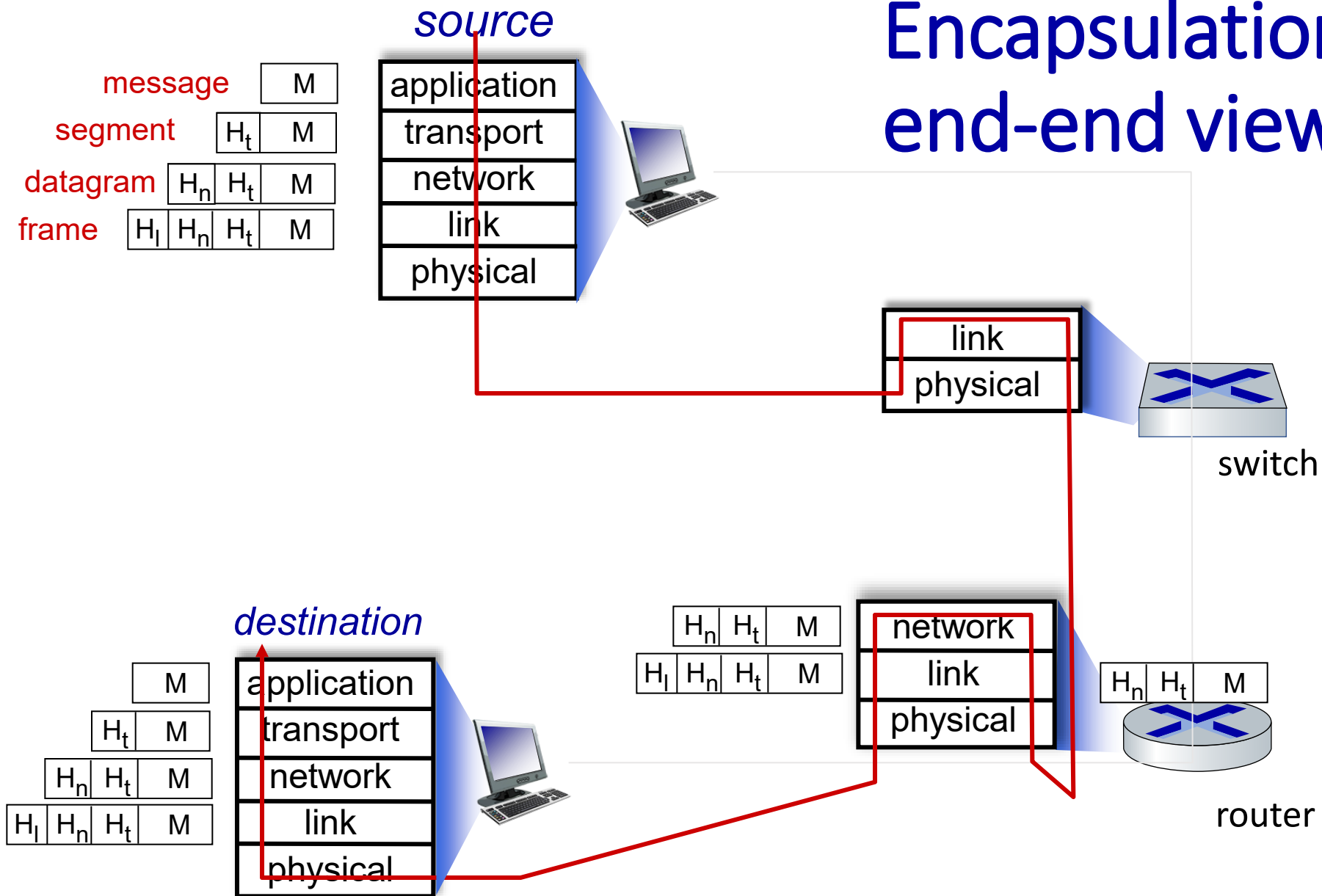
Services, Layering and Encapsulation



Services, Layering and Encapsulation



Encapsulation: an end-end view



Chapter 1: roadmap

- What *is* the Internet?
- What *is* a protocol?
- Network edge: hosts, access network, physical media
- Network core: packet/circuit switching, internet structure
- Performance: loss, delay, throughput
- Security
- Protocol layers, service models
- History



Chapter 1: summary

We've covered a “ton” of material!

- Internet overview
- what's a protocol?
- network edge, access network, core
 - packet-switching versus circuit-switching
 - Internet structure
- performance: loss, delay, throughput
- layering, service models
- security
- history

You now have:

- context, overview, vocabulary, “feel” of networking
- more depth, detail, *and fun* to follow!