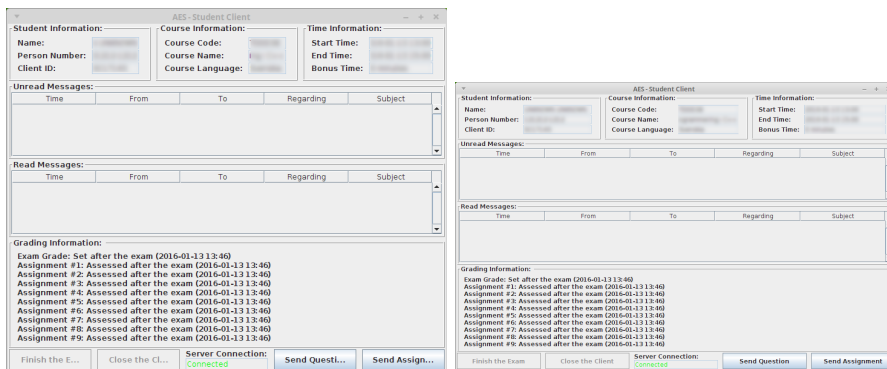


## A short introduction to the student client

The student client is used during this exam to communicate with course staff and to submit your answers. It is shown in image 1a. An enlarged image (with full text in buttons) is shown in figure 1b.



(a) The student client

(b) The student client (enlarged)

The fields "Unread messages" and "Read messages" are message queues where messages from course staff or the server will be saved. Double-click on a message to read it (if it was in the queue for unread messages, it will then be moved to the other queue).

On the bottom right you can find two interesting buttons, "Send Question" and "Send Assignment". Use the button "Send question" if you have any questions regarding the exam or a specific assignment. If you click it you get a dialog like the one in figure 2. Select which assignment your question is about and write your message. It will be answered in a FIFO way so it might take a couple of minutes for your answer depending on the current number of questions.

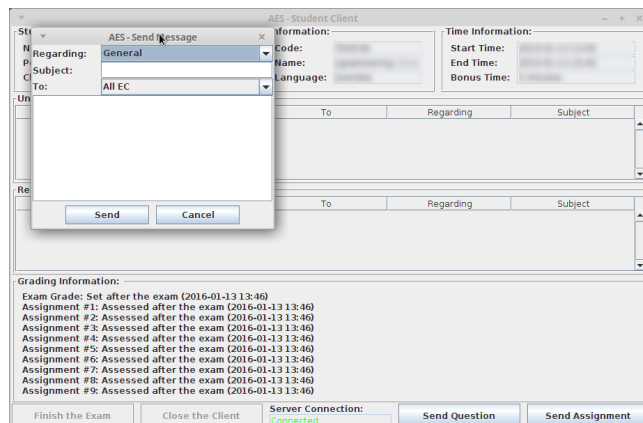


Figure 2: Send question dialog

The last button, "Send Assignment" is used to submit your answers. You can submit the same question several times, but *only* the last submission will be graded. When you click on the button, the dialog in figure 3 is shown. Select which assignment your file tries to solve and attach the files needed for grading (i.e. a txt-file for theory questions and all files needed to compile your program for programming exercises).

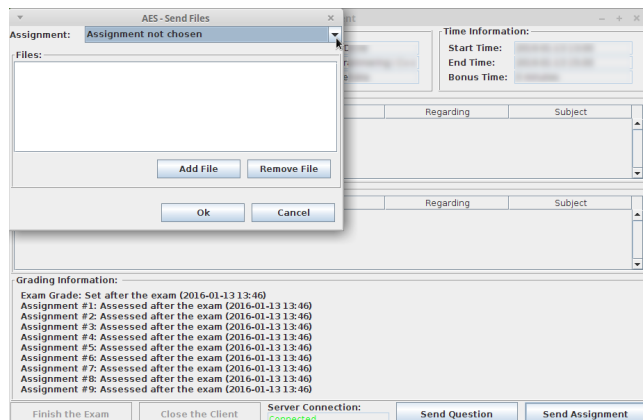


Figure 3: The Send Assignment dialog

There are buttons for ending the exam, but these aren't implemented yet. Just logout using the standard logout function in the system (from the menu) when you are finished. DO NOT logout unless you are finished, you won't be able to login again!