

Course logistics

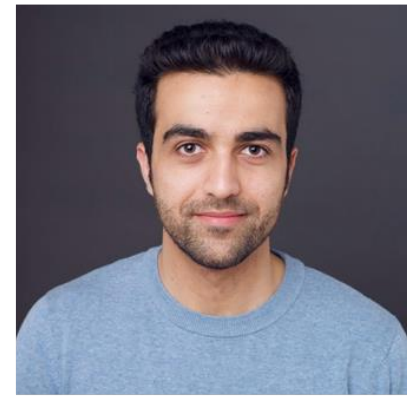
Marco Kuhlmann

Department of Computer and Information Science

Course team



Ali Basirat



Ehsan Doostmohammadi



Jenny Kunz



Marcel Bollmann



Marco Kuhlmann



Martin Funkquist



Oskar Holmström



Riley Capshaw

LAB

3 credits

5 labs (ca. 10 hours/lab)

UPG

3 credits

Post-project paper

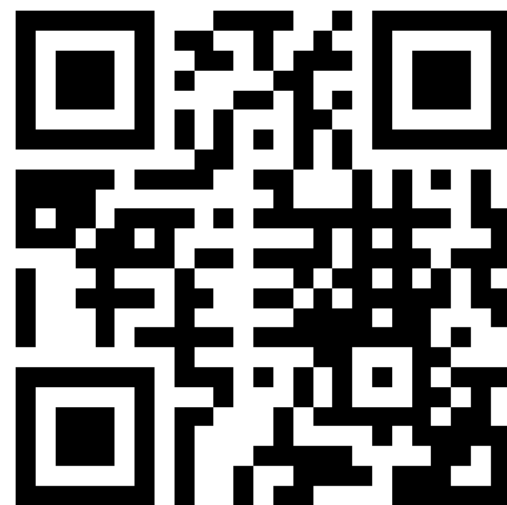
Project (ca. 40 hours)

Video lectures & teaching sessions

	Monday 8–10	Tuesday 10–12	Wednesday 13–17	Friday 8–10
W03	CORE Course introduction	Self-study	LAB Preparatory lab (2h)	UPG Introduction to the project
W04	CORE Word representations	Self-study	LAB Word representations (2h)	LAB Word representations
W05	CORE Language modelling	Self-study	LAB Language modelling (2h)	LAB Language modelling
W06	CORE Large language models	Self-study	LAB Large language models (2h)	LAB Large language models
W07	CORE Sequence labelling	Self-study	LAB Sequence labelling (2h)	LAB Sequence labelling
W08	CORE Syntactic analysis	Self-study	LAB Syntactic analysis (2h)	LAB Syntactic analysis
W09	UPG Project supervision	UPG Project supervision	UPG Project supervision	UPG Project supervision
W10	UPG Project supervision	UPG Project supervision	UPG Project supervision	UPG Project supervision
W11	Self-study	UPG Course conference	UPG Course conference	UPG Course conference
W12	Self-study	Self-study	Self-study	Course deadline (2023-03-25)

Detailed information
about the course logistics and examination
is available on the course website:

[TDDE09](#)



Evaluation of the previous session

- The Spring 2022 session had 58 registered students. Out of these, 16 submitted a course evaluation. (Response rate: 28%)
- The respondents were generally very positive about the course (overall evaluation: 4.94 out of 5).
- In contrast to the previous evaluation, most (15 out of 16) respondents stated that the course work matched the credit value.

Changes from the previous session

- This year we changed the order of the units so that Unit 5 (large language models) comes earlier than last year. We believe that this will increase the number of self-proposed projects.
- Our statistics from last year showed that relatively few students watched the video lectures, which had the effect that the labs had a steep learning curve. This year we are introducing quizzes.