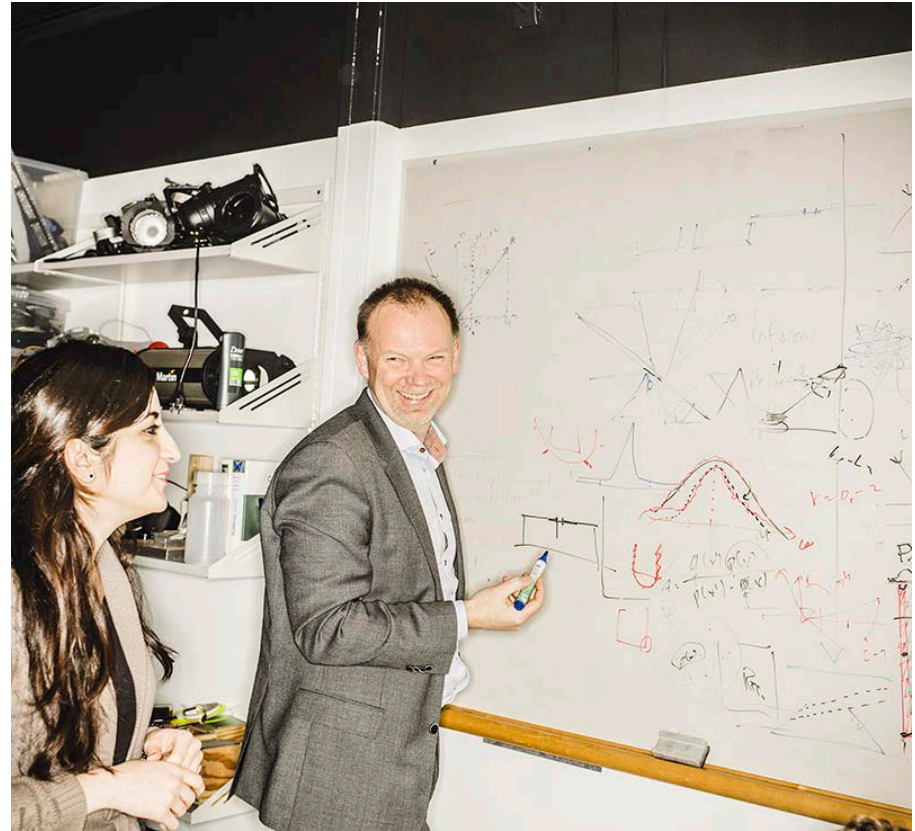


# Linköping University

Presentation

# This is Linköping University

- 27,000 undergraduate students
- 4,000 employees
- Income SEK 3,500 million



# Four campuses in three cities



Valla, Linköping



Norrköping



University Hospital, Linköping



Lidingö, Stockholm

# Innovative study programmes





# Students find employment quickly

LiU's graduates rank second in Sweden for quickly finding employment.



# Notable alumni



**Peter Agnefjäll,  
President and  
CEO, Ikea Group**



**Gustav Fridolin,  
Swedish Minister  
for Education**



**Helena Norrman,  
Senior Vice  
President  
Marketing and  
Communications  
Ericsson**

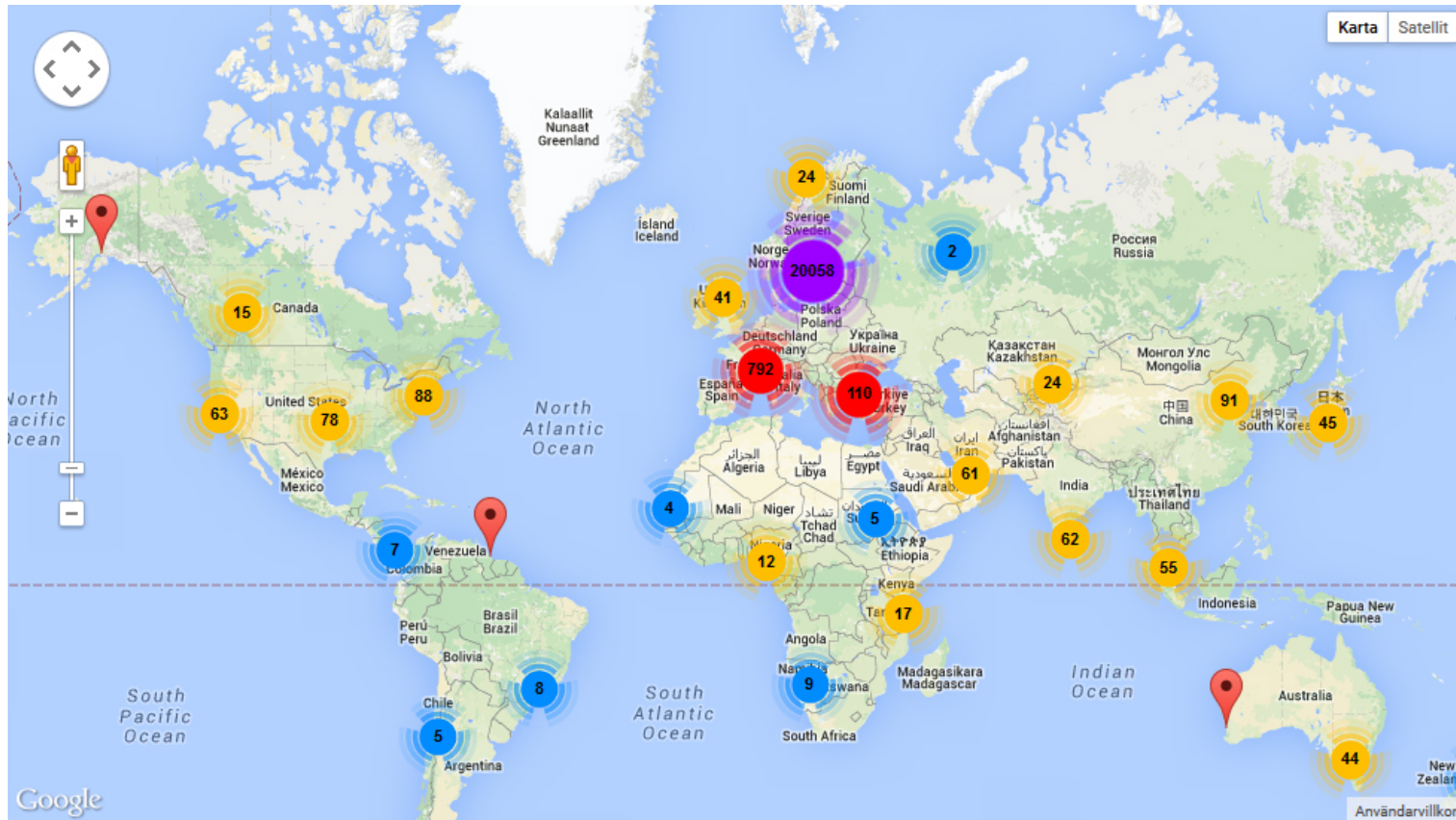


**Carl-Henric  
Svanberg,  
Chairman,  
BP and Volvo**



**Zhong Zhihua,  
Secretary-General  
and Academician,  
Chinese Academy  
of Engineering  
(CAE)**

# Alumni all over the world





# 1,300 doctoral students



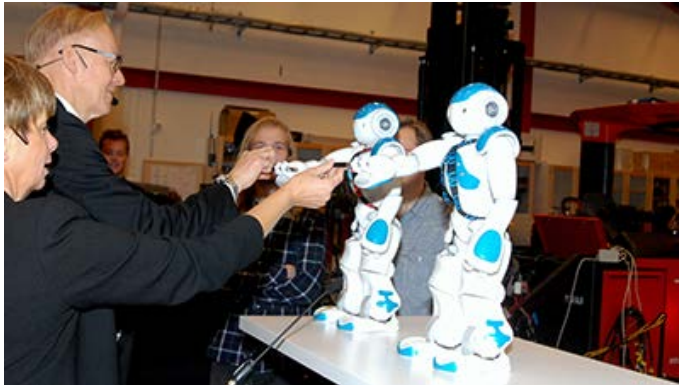


# High in international rankings

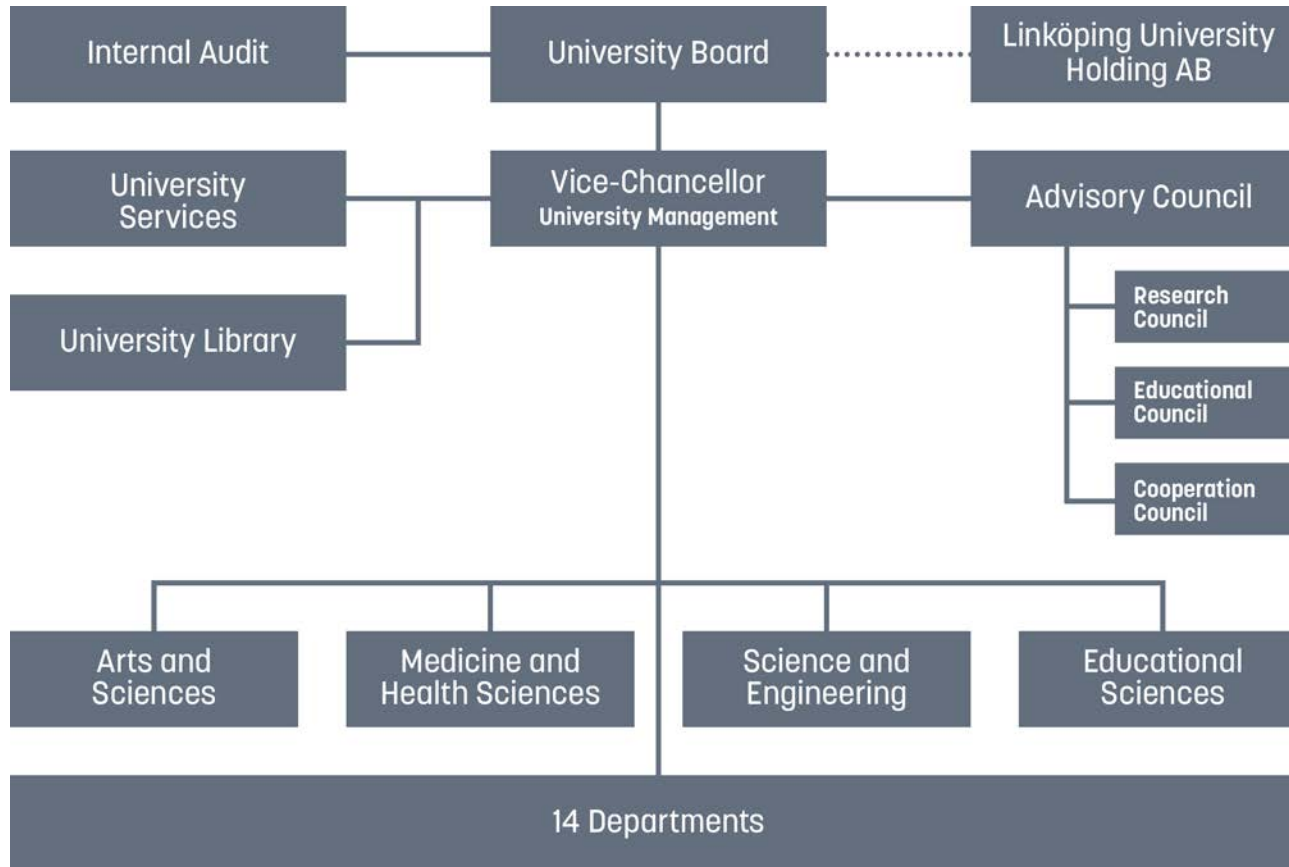
Among the top 2%  
in the world in  
international  
university rankings.



# Innovation and collaboration



# Organisation



# Department of Computer and Information Science (IDA)

Linköping University  
Sweden



Year 2014

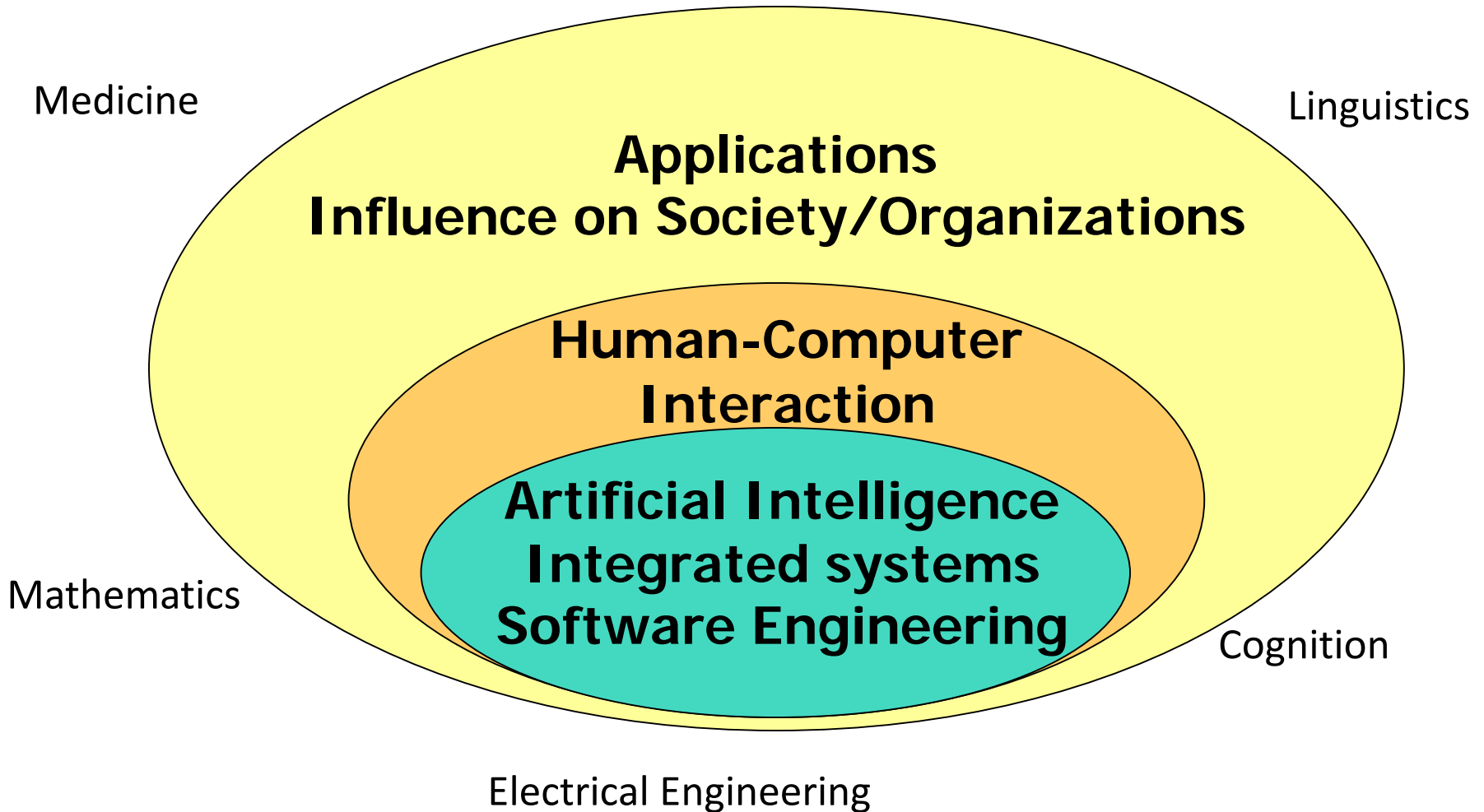




# Some figures...

- Founded in 1983 (in practice 1975)
- 191 Employees (M=139, F=52)
- 48 PhD Students (M=38, F=10)
- 25 Professors (M=20, F=5)
- 77 Researchers/Teachers (M=65, F=12)
- 205 Undergraduate Courses
- Turnover 163 MSEK (~USD 18,8 Million, ~17,5 Million EUR)

# Research: a Bird's Eye View

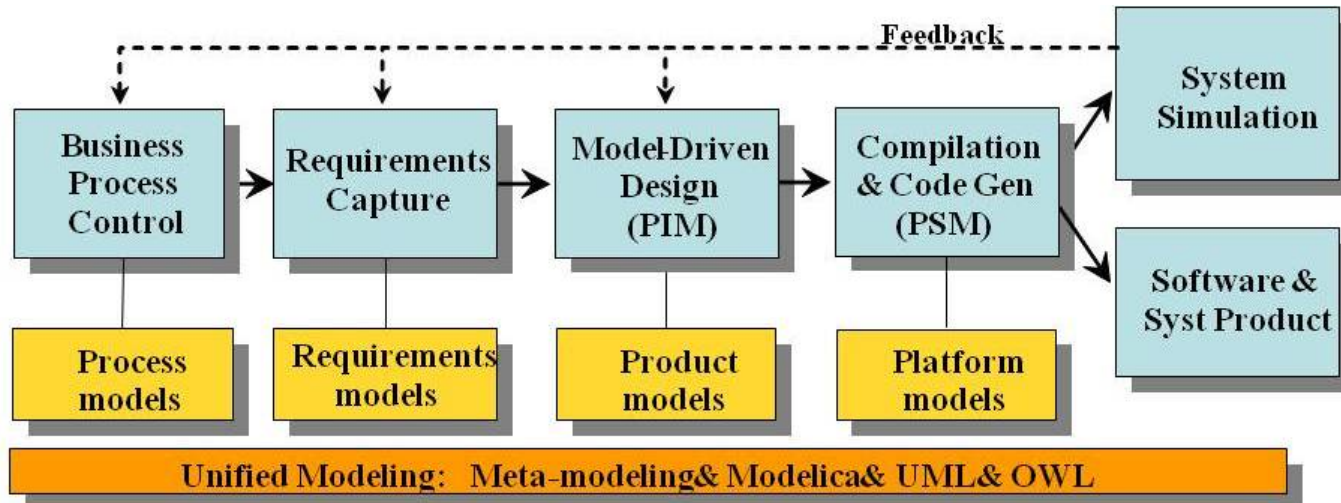


# Areas of Research

- Artificial Intelligence
- Autonomous Systems
- Intelligent Systems
- Cognitive Systems Engineering
- Compilers
- Databases
- Embedded Systems
- Geographic Information Systems
- Human-Computer Interaction
- Interaction and Service Design
- Information Security
- Machine Learning
- Natural Language Technology
- Programming Environments
- Real-Time Systems
- Safety and Security in Complex Systems
- Soft Computing
- Software Engineering
- Statistics
- Theoretical Computer Science

# Programming Environments Laboratory

- PELAB's focus is tools and methods for software engineering.
- Research areas comprise the entire software lifecycle , esp.
  - Compilers, parallel computing and software composition.
  - Programming, modeling and simulation languages (eg.: MODELICA).
  - Large-scale software engineering, requirements, testing and debugging.
  - Vision of integrated model-based product development.



- Integrated environment with Eclipse, open-source and industrial M&S tools. Models of software and hardware are compiled to executable code for multi-core computers



# Agenda of today

- 13:00 Short presentation of Linköping University, Kristian Sandahl
- 13:10 IEEE Sweden, 50 years, Mats Edvinsson
- 13:25 Background to the Standard, Harold “Bud” Lawson
- 14:10 Practical experience from SAAB, Erik Herzog
- 14:55 Coffee break
- 15:15 Message from INCOSE Sweden, Tom Strandberg
- 15:30 Practical experience from small and large companies in different areas, Tom Strandberg
- 16:15 Experience from applying the standard, Tommy Nordqvist
- 16:45 Using the standard in education, Kristian Sandahl
- 17:00 End of seminar

Photos: Margareta Alfredson, Thor Balkhed, Göran Billeson, David Einar, Annika Johansson, Lena Katarina Johansson, Sverker Johansson, Maria Karlberg, Ann-Christine Lekberg, Jean-Yves Limet, Ida Ling Flanagan, Vibeke Mathiesen, Peter Modin, Anna Nilsen, Gunilla Pravitz, John Sandlund, Hanna Söderqvist, Shideh Tabe, Filip Wiltgren, Ericsson, KPMG, Volvo.

Illustrations: Peter Modin, Fanny Ståhl, Jenny Widén, iStock.

[www.liu.se](http://www.liu.se)